

EFMLS NEWS

Information for Members of the Eastern Federation of Mineralogical & Lapidary Societies

HAPPY MEMORIAL DAY



**Volume 69, Number 7
May 2022**

2022 ANNUAL CONVENTION

Did you mark your calendar to attend the in-person convention (sponsored by the Central Pennsylvania Rock and Mineral Club) to be held in Harrisburg, PA, September 23-25? The June issue of EFMLS News will have more information on the convention including registration forms, hotel accommodations, etc.

Many clubs do not meet during July and August. On page 4 is a director/alternate and delegate/alternate registration form. Please discuss with your club, executive committee or however you chose your alternate. The delegate is your president. Follow the directions on the form.

ELECTION OF OFFICERS

The Nominating Committee Needs Candidates

At the September 23-25 convention, there will be an election of officers. The positions that will be voted on are:

President	Assistant Treasurer (2-year term)
1 st Vice President	Newsletter Editor (2-year term)
2 nd Vice President	Nominating Committee Members (1-3-year Terms)

The nominating Committee is still looking for and in need of nominations from you. Please nominate someone for any of the positions (or even yourself if you would like to serve in one of the positions) by contacting a member of the nominating committee—Matt Charsky (matt2430@comcast.net); Bob Livingston (gemguy@verizon.net); Betsy Oberheim (aoberheim@comcast.net).

REGIONAL VICE-PRESIDENTIAL ELECTIONS

Even numbered region elections (Regions II, IV, VI, VIII) are underway and nominations are due May 30. See article beginning on page 5. **Your club chooses your regional representative.**

Communications and involvement are our keys to success.

EFMLS OFFICERS

2021-2022

ELLERY BOROW	President	rocknellery@fairpoint.net
BILL STEPHENS	1st Vice President	bstephens@stephensenv.com
LARRY HUFFMAN	2nd Vice President	ldhuff314@gmail.com
KARENNE SNOW	Secretary	mineral.fossils.rocks@gmail.com
BARBARA RINGHISER	Treasurer	bar5678@aol.com
JOHN SPEIER	Assistant Treasurer	fontsyscp@hotmail.com
MARY BATEMAN	Editor	mbateman1@verizon.net
ERIC HOFFMAN	Immediate Past President	ephoffman@gmail.com
HAZEL REMALEY	Past President's Advisory Council	northridge5@yahoo.com
RJ HARRIS	General Show Chairman	roqfreq@rjharris.com

Editor contact information: efmlsnews.editor@gmail.com,

The EFMLS website can be found at www.EFMLS.org.

Deadline is the first of each month prior to publication date (i.e., March 1 for April issue). If you cannot meet the deadline, please contact the editor. No issue is normally published during July nor August. Non-commercial reprint permission is granted unless otherwise reserved. *EFMLS News* is the official newsletter of the Eastern Federation of Mineralogical and Lapidary Societies, Inc.

PRESIDENT'S MESSAGE

PROGRESS

Writing a President's Message is one of the more interesting and enjoyable aspects of holding the office. The reason for this enjoyment is that there are so very many activities about which to write. This month we have:

The EFMLS website is undergoing a metamorphous to emerge as a bigger and better entity. As with any website redevelopment, there are a great many inter-connected parts. Making all the inter-connected parts interact seamlessly will take the concerted effort now underway.

Zooming is a work in progress. The power of virtual encounters is enormous. Presently limited use is being made of the capability of this tool. With the current effort, we hope to offer more access to clubs and EFMLS Regional VPs. We are looking for a Zoom master to administer the full potential of Zoom. To fully utilize the potential of the account, the EFMLS, with member club participation, will have discussions as to how best serve its member clubs.

A member club's field trips are not something the EFMLS can coordinate for local clubs. Indeed, the hands-on work with mine/property owners and area clubs are best accomplished locally. What the EFMLS can do is help by offering ideas to assist clubs with property owner discussions on collecting

and cooperative working relationships. In discussions with clubs, it is clear that insurance required by mine owners, safety access, sensible rules, and cooperation go a long way with securing continued access to precious collecting localities. The effort of maintaining access to collecting sites is important. Clubs sharing information on working with mine owners may be of help to other clubs.

The Rochester Mineral Symposium was held virtually for the third year in a row. The Symposium is an "institution" among collectors. For those who could not attend, the EFMLS library has numerous Rochester program offerings for viewing by member clubs at their club meetings. Our thanks go to Rochester's Board for being able to offer those programs.

There is much more to write about... later. Progress on so many fronts is encouraging.

Ellery Borow, President

CLUB ROCKHOUND OF THE YEAR

Club Rockhound of the Year Officers

Let's face it, a club's officers accomplish a tremendous amount of the leg work in keeping a club active, engaging, informative, and fun with its field trips, shows, workshops, to name a few. To keep all that running smoothly requires exceptional club leadership.

Why not consider great leadership as a criteria when selecting your club's 2022 Club Rockhound of the Year honoree. Does your club have an incredible president, a fabulous secretary, a phenomenal treasurer, a fantastic vice president? You be the judge. You be the arbiter of phenomenal.

If your club has a plethora of outstanding officers, you may nominate one in 2022, another in 2023, and another in 2024, and so on. Everyone deserving recognition for their fantastic devotion to the club should be acknowledged.

To participate in the CROY program of publicly honoring your best officer (or other criteria) there are just a few simple guidelines as follows:

After your club selects a person to honor, put together a brief write-up of their effort, send the write-up to me and we will ensure that your honoree is mentioned in the pages of the AFMS and EFMLS newsletters. Please keep the write-up to about 70 words. The limit is one person (or couple) per year, per club, please. Also, one junior member may be honored per club, per year. In addition to the write-up, we will need the honoree's names(s), name of the club, and person submitting the name. Send us the information and we will do the rest.

Thank you for your consideration to honor club officers who do their best with being a great officer as they serve your club.

Send your nominee(s) to Ellery Borow and, should you have any questions, contact Ellery for information in participating in the Club Rockhound of the Year program (rocknellery@fairpoint.net).



Eastern Federation
of Mineralogical and Lapidary Societies, Inc.
 Affiliated with the American Federation of Mineralogical Societies, Inc.



72ND ANNUAL EFMLS BOARD OF DIRECTORS' MEETING

Hosted by the Central Pennsylvania Rock and Mineral Club, Inc.

Harrisburg, Pennsylvania
 September 23-25, 2022

DIRECTOR / DELEGATE REGISTRATION FORM

Please print all information requested clearly.

Name of
 Organization: _____

Director: _____ E-Mail: _____
(The President of each EFMLS Affiliated Member Organization is a DIRECTOR of the EFMLS. Please list the name of the Member Organization's President, only if he/she plans to attend this Meeting.)

Director's
 Alternate: _____ E-Mail: _____
(To represent the Member Organization if the President cannot attend the Meeting.)

Delegate: _____ E-Mail: _____
(Elected by the Affiliated Organization's own members.)

Alternate
 Delegate: _____ E-Mail: _____
(To represent the Member Organization if the Delegate cannot attend the Meeting.)

 SIGNATURE AND TITLE OF ORGANIZATION OFFICER

From the EFMLS Constitution
 (Article V, Sec.3)

It shall be the responsibility of each
 Affiliated Member Organization
 to notify the Secretary in writing of
 the names of its Director, Delegate,
 and Alternate who expect to attend
 the Annual Meeting, fifteen (15) days
 prior to the convening date.

Please RETURN no later than September 1, 2022 to:

Kareene Snow
 EFMLS Secretary
 P.O. Box 626
 Medford, NJ 08055
 <minerals.fossils.rocks@gmail.com>

AFMS SCHOLARSHIP FOUNDATION

The EFMLS has selected the 2022 recipient for the AFMS Scholarship Foundation award. The honor this year goes to Professor and Director Karl Kreutz of the University of Maine at Orono School of Earth and Climate Science. As the honoree, Professor Kreutz will work with the School's selection committee to choose two students within their post graduate programs for a \$2,000 a year for two-year award to help with their education in a Masters or Doctorate degree program. There is a requirement that the awardee has achievements and contributions in areas of federation interest including geology, paleontology, mineralogy, geoscience, archeology, gem cutting, jewelry making, or other aspects of the lapidary arts. Please join with us in congratulating Professor Kreutz with this honor.

Ellery Borow, President

WHAT ARE VOLUNTEERS?

[Volunteers are the life blood of any club and the Federation. The following is reprinted from the April 1999 *AFMS Newsletter* from the *Hourglass News*, via *SCFMS Newsletter*, et al. Author unknown.]

Volunteers are like Ford – They have a better idea.

Volunteers are like Coke – They're the real thing.

Volunteers are like Pan Am – They make the going great.

Volunteers are like Dial Soap – They care more, don't you wish everybody did?

Volunteers are like VO-5 Hair Spray – They hold up in all kinds of weather.

Volunteers are like Hallmark Cards – They care enough to give the very best.

Volunteers are like Standard Oil – You expect more and you get it.

But most of all....

Volunteers are like Frosted Flakes – **They're GRRRRRRRREAT!!!**

EVEN NUMBERED REGIONAL VICE PRESIDENTIAL NOMINATIONS

Nominations and elections for even numbered regions (II, IV, VI, VII) are underway. Regional Vice Presidents (RVP) hold an important position in the Federation. They represent areas within the Federation and are the officer that has the pulse on their region. They provide a link between the Federation and the member societies within their region. They serve on both the Board of Directors and the Executive Board. RVPs can represent and vote on behalf of one or more of their Region's Clubs and typically attend the annual meeting. RVPs provide assistance to prospective Federation members and provide them with a new member packet; keep in touch with members in his/her region (in person, mail, electronic communications, social media); and more.

Several regional VP positions are vacant and must be filled immediately. Clubs decide who they want representing their region. If you know of anyone in your region you think would make a good regional vice president, please pass that person's name on to Bill Stephens, EFMLS 1st Vice President. Or perhaps you would like to be considered for the position. Bill will not be seeking re-election in Region 4, so that position will require a new face, as well. Bill can be reached at bstephens@stephensenv.com. Nomination forms for even numbered Regional RVPs are attached (see page 7) for your convenience along with a letter (see page 6) seeking even-numbered regional RVPs. Please RSVP to Mr. Stephens with the correct email of your club's President Director and anyone else you would like to have ballots sent to in the event an election is needed (multiple nominees). Feel free to reach out with any questions.



Eastern Federation
of Mineralogical and Lapidary Societies, Inc.
Affiliated with the American Federation of Mineralogical Societies, Inc.



To: All EFMLS Clubs in Regions II, IV, VI, VIII

Re: EFMLS Regional Vice President Nominations for (2022-2023)

Dear Club President,

It is time to begin the Eastern Federation of Mineralogical and Lapidary Societies, Inc. (EFMLS) elections for our Regional Vice Presidents in the even-numbered EFMLS Regions of II, IV, VI, VIII.

The responsibility for conducting the regional elections is granted to the EFMLS First Vice President by the Operating Procedures. The even-number regional elections are conducted in the even-numbered years. Therefore, I am contacting your club to request a nomination for your region's EFMLS Regional Vice President to represent your region and club for the next two years, beginning as soon as possible.

Please discuss this important matter with your club members. After your club has reached its decision, please complete the information on the enclosed EFMLS Regional Vice President Nomination Form [page 7] and **return to me no later than May 30, 2022**. After all the nominations are turned in, if there is only one candidate's name received, that person will be declared the winner by acclamation. If there is more than one nominee, it will be necessary to have a run-off election. In such event, a ballot form and candidate biographies will be sent to you so that you can cast your vote for the Regional Vice President candidate you feel would best serve your region until October 31st, (2024).

Note: If you wish to keep your current Regional VP, we still need to receive your nomination with that person's name as the nominee.

The EFMLS system of Regional Vice Presidents is your first link in contacting and working with the EFMLS. Please give this important vote regarding nominating a candidate all due consideration. This is an opportunity to make your voice heard and have a vote on the EFMLS Executive Board for your region. I look forward to hearing from you.

The election results will be published in the EFMLS News.

If you have any questions, please feel free to contact me at the address below or by phone (302-540-3453) or email at bstephens@stephensenv.com. Thank you for your attention to this matter, I would appreciate your prompt reply.

Sincerely,

Bill Stephens, PG, EFMLS 1st VP
11 Ailsa Court, Rising Sun, MD 21911-2505 6 5

Communications and involvement are our keys to success.

May 2022

Page 6



Eastern Federation
of Mineralogical and Lapidary Societies, Inc.
Affiliated with the American Federation of Mineralogical Societies, Inc.



(2022-2024) EFMLS REGIONAL VICE PRESIDENT NOMINATION FORM
EVEN-NUMBERED REGIONS

Please this form by (**May 30, 2022**) Please print clearly, thank you.

We, the _____
(name of EFMLS club in Region II, IV, VI, VIII) (circle one)

wish to nominate: _____
(Name of nominee)

for the position of Regional Vice President in our Region.

The address/email address of the nominee is:

The phone number of the nominee is: _____

The nominee is a club member of the following EFMLS club:

(nominee's home club)

Signature of club officer
submitting nomination: _____

Title: _____

Date: _____

Please return to:

Bill Stephens, PG, EFMLS First VP)
11 Ailsa Court, Rising Sun, MD 21911-2505, 302-540-3453, E-Mail (preferred)
bstephens@stephensenv.com

SAFETY

Safety Matters – Safety is for Everyone

Safety is for the one. Safety is also for the many.

Keeping the shop floor clean helps keep one safe, yet also keeps everyone walking through the area safe. Keeping one's car well maintained keeps the driver safe as they head out on their field trip, at the same time helps keep all the passengers safe. Placing approved electrical cord coverings on wires helps keep one safe but also keeps everyone traversing the floor safe. Maintaining the wheel guards on the cabbing machine keeps the lapidary artist safe, as well as other users safe. Being mindful that chips are flying while hammering on rocks, helps keep the chippers eyes safe and the eyes of all those around.

In the broader sense of one helping many be safe is the fact that, if the car is safe, the driver gets to go home and help keep their family safe. Time and again keeping oneself safe has the repercussion of helping to keep others safe as well. Even the act of keeping one's eyes protected by goggles, keeps the family protected from having to care for a potentially visually compromised family member.

Safety is about keeping the entire rockhound community safe.

Let us look at another issue. If one collector ignores a safety rule at a collecting site, once discovered, the consequences could be the entire club is not invited back, worse, the site is closed to collectors permanently. Safety needs to be everyone's responsibility. The safety of one and the safety of many are interlinked. The entire rockhound hobby benefits by observing good safety habits.

If one sees an unsafe situation or activity, please speak up, tend to the unsafe situation yourself, or bring it to the attention of those who may be able to assist. Our hobby is about the one and is about the community of us all.

Your safety matters, as does the safety of everyone. Please consider being a part of helping everyone be safe.

Ellery Borow, Chair, EFMLS Safety Committee



Our thoughts, prayers and condolences continue to be with the grieving loved ones and friends of those who have lost the battle with their lives to the coronavirus and its variants.

REIVEN ZELEZNIK

Reiven Zeleznik had been in hospice care since the beginning of the year. It is with great sadness that we report his passing on April 22, 2022.

Reiven was a person you met and never forgot. He was always full of life and always had a good story to tell. He was an institution at Wildacres. You had to watch out that you were not his next target for a prank. Reiven was an expert in faceting and used that knowledge to teach and inspire many other people both at Wildacres and at home. Through the years he gave those who took his class a new area in the hobby to pursue. He made sure that each student finished a stone. Many a time, if a student couldn't finish their stone, he would complete it so they had something for Show and Tell and to take home.

Reiven had a unique booming voice, was a member of the Stamford Mineralogical Society (Connecticut) and served in several positions in EFMLS including being an officer. He and his wife, Myra, attended many EFMLS conventions together. Reiven was devoted to his family. As an example, he resigned as EFMLS president so he and Myra could go to Hawaii to help their daughter.

Reiven's presence will be greatly missed. May he rest in peace.

Mary Bateman, Bob Livingston, Steve Weinberger contributed to this article.

ANOTHER SCAM ALERT

EFMLS President Ellery Borow's name is once again being fraudulently used to solicit monies from club treasurers and possibly additional club officers through an e-mail scam. We ask that recipients of such notices to please stay alert as they take many guises and make the solicitations with many different wordings. Please do not respond to these messages. Either delete them or report them to authorities. What makes these notices effective is that they are crafted to elicit a response. In so doing, people do play into their hands and send money or buy debit and gift cards. Please be part of the solution to ending such notices by not responding to their appearance in your e-mail box.

Ellery Borow, President

A HOBBY OF PASSION

Have you noted the passion in this grand hobby of ours? There is a passion everywhere one looks in our clubs, shows, field trips, programs, and activities. The passion runs through every detail of what we do. The member providing the meeting refreshment offerings wants to bake and offer the very best of cupcakes for the enjoyment of meeting attendees.

The passions in clubs extend to being the best show chair, making sure the most people attend the show. Knowing the club's program chair will try and select the best meeting programs. Trusting the field trip committee chair will do their best to arrange great field trips. The club's members show their passions in the hobby with everything from cutting, grinding and polishing the best, most artful miniature works of art called cabochons, to their effort with helping at their club's show.

Most of the clubs in the EFMLS are not specialized in being only for fossil collectors or only lapidary artists. Most clubs include members with many and varied interests -- fossils, micromounter, jewelry

maker, gem cutter, specimen collector, pretty rock collector, mineral chemistry expert, and many, many more -- all in one club. The beauty of so many interests is having passionate members willing to share and teach others about their passions and interests.

Clubs afford opportunities for like-minded and open-minded people to share their passions, curiosities, desire to learn and teach, explore new ideas, and their friendship. Clubs do not necessarily focus on goals but journeys. Take the humble drive and walk to the dig site -- along the way there are likely to be interesting things to see and people to meet. There may be interesting rock formations, an unusual-to-the-area blue bird, different ferns or fungi on a stand of trees. The most straight forward of journeys will most always be filled with opportunities to see and experience new things. Clubs and the journeys to be experienced in them are wonderful assemblies of people to share one's passions in our hobby.

A Federation is an assembly of clubs to help with the journey, with the communication, with the learning, with offering ideas, programs and experiences. The people in clubs do their best to help their members. The people in Federations do their best to help their member clubs. Passions run high in clubs and federations. Working together, learning together, and sharing are all part of the journey our clubs and federation want to offer. Join a club, join another club, participate in a Federation to help many clubs to share the passions and the fun in learning.

Over the past few years of COVID-19 and its variants, the power and determination of clubs to do what they do best has been tested, and still remains strong. The passions with and in our hobby remain as vibrant as ever. Keep sharing, keep having fun, keep the passion alive and well.

Ellery Borow, President

FALL WILDACRES

September 5-11, 2022

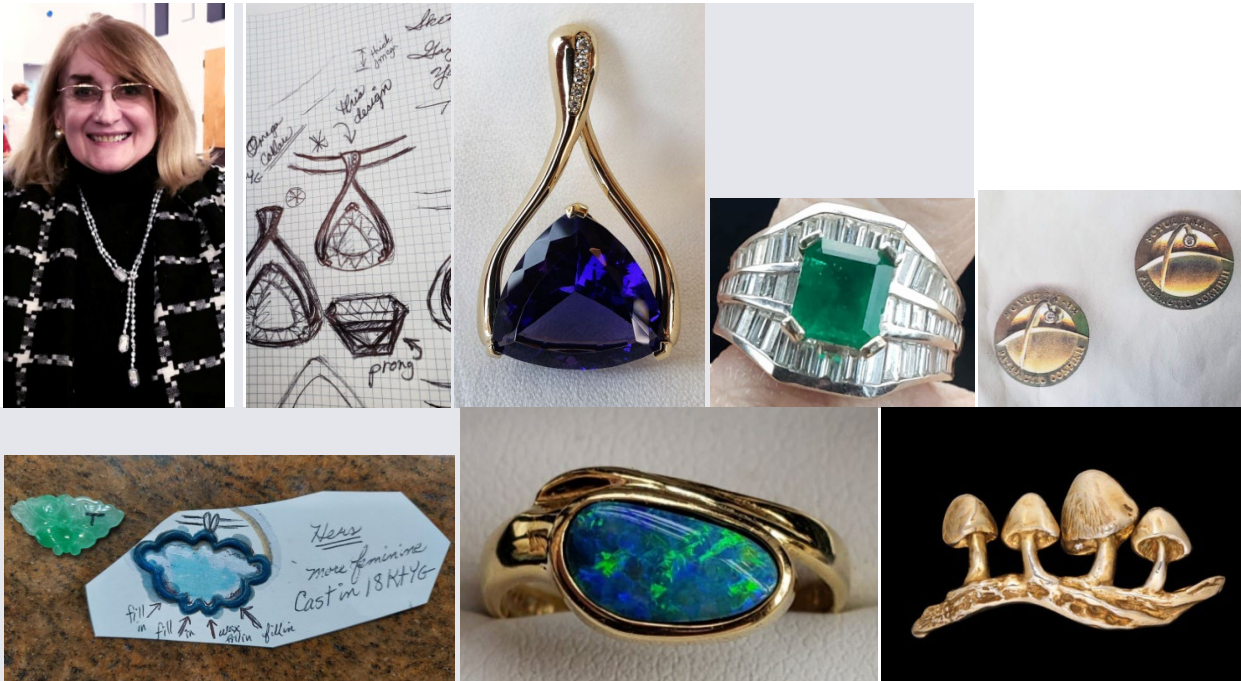
If you have not already signed up for the Fall Wildacres, now is the time to do so. The Speaker-in-Residence will be Mary Ehlers, a jewelry artist, goldsmith and jewelry designer recognized for her custom jewelry. She is sure to be a great addition to our Wildacres Fall experience. She will be accompanied with her husband, Stephen Toth. Classes (see pages 13-16) include Cabochons, Chainmaille, Flint Knapping, Loop N Loop, Soapstone Carving and Viking Knit/Wire Works.

Following are reprinted a bio for Mary Ehlers (Speaker-in-Residence), the 2022 Wildacres Registration Form and the Fall 2022 Class Schedule. If you have any questions, please feel free to contact Steve Weinberger, Chairman (cscrystals2@gmail.com); Mark Kucera, Director (mark_j_kucera@yahoo.com); or Suzie Milligan, Registrar (smilligan@stny.it).

FALL 2022 WILDACRES SPEAKER-IN-RESIDENCE:

MARY EHLERS

We are very fortunate to have another fabulous Speaker-in-Residence for the Fall 2022 EFMLS Wildacres Workshop, **Mary Ehlers**, a jewelry artist, goldsmith, and jewelry designer recognized for her amazing custom jewelry. The Fall Wildacres workshop will take place September 5 to 11, 2022.



Mary Ehlers is the owner of **The Nugget** custom jewelry design store, and currently works as a private jeweler. She designs, creates and sells custom design jewelry, as well as vintage and estate jewelry, precious stones, pearls, and designer jewelry from other designers, in 14K, 18K and platinum. Her specialty for over 30 years has been engagement and wedding rings. In addition, Mary creates unique, one-of-a-kind designs for clients with and without precious stones. She also designs logos for corporations, and special event jewelry designs for non-profit organizations.

Mary went to high school in Iowa, and then studied Jewelry Design and Metalsmithing at Iowa State University, where she also studied Textile Design and lost wax casting and received her M.A in 1970. Mary had a studio at the now famous Torpedo Factory Art Center in Alexandria, Virginia, and was the Jewelry instructor for the Alexandria Art League and the Adult Jewelry classes. She also has a wealth of retail experience, having her store in Old Town Alexandria in Virginia from 1974 to 2012.

Mary created jewelry commissions for notable clients and corporations. One of her special pins was a Presentation Gift to Former Secretary of State Madeleine Albright. The pin “Mushrooms & Pathways to Peace” celebrates the Middle East peace talks and has been on display at several museums. Mary also created the astronaut pins presented by Buzz Aldrin to the first two male citizen astronauts, Greg Olsen and Dennis Tito, at a Space Conference in California.

In Mary’s words, “I am touched by all the wonderful commissions I have received and by the trust that many of those clients have had in me as they continue to place orders. I had no idea that I could have my avocation become my vocation and that I could become my own boss and actually earn a respectable living doing what I loved so much. I continue to learn more and more skills and I am working on learning more lapidary skills to add to my tool kit.”

Mary Ehlers beams an incredible life and work experience. She is a wonderful, gentle soul, and humble jewelry artist, who will connect with everyone there. In her talks, Mary will share her journey, her special commission pieces, special jewelry designs, her love for vintage and antique jewelry, and much more. Mary Ehlers-Toth will be accompanied by her husband Stephen Toth, a Civil Engineer with a 42-year career for Chicago Bridge and Iron, a company serving the worldwide energy industry. I hope you can join her this fall and celebrate her birthday on September 5th with her!

Helen Serras-Herman, Wildacres Speaker-in-Residence Coordinator



2022 EFMLS Wildacres Registration

PLEASE, ONLY one person per form per session

CHECK ONE: **Spring: May 16 – 22** _____ **Fall: Sept. 5 – 11** _____
Please fill out a separate registration form for each person attending and return to SUZIE MILLIGAN, 931 Carmichael Rd; Owego, NY 13827-3320. **No**

registration will be accepted prior to January 1, 2022. (To make it easier for the Registrar and others, **please do not change or revise this form.** You may photocopy it as needed.)

Please print legibly!

Name (as you wish it to appear on your Name Badge): _____

For Office Use Only	
ID #	_____
Date Rec'd	_____
Amt. Paid:	_____
Ck #:	_____
Amt. Paid:	_____
Ck #	_____

Street: _____ City: _____ State: _____ Zip Code: _____

Telephone number with area code: (____) _____ e-mail: _____

EFMLS Club/ Society Affiliation: _____

Fee for each session is \$445.00 per person. Deposit is \$225 per person, payable with Registration. Make checks payable to "EFMLS." Balance of fee is due 30 days prior to start of session.

No postdated checks will be accepted.

Cancellation policy: If unable to attend, fees paid will be refunded if notification is given prior to one month before the session begins. No refund will be made after that date.

Check appropriate responses:

Have you been to Wildacres before? Yes _____ No _____ Is your Society paying your tuition? Yes _____ No _____

Name of Roommate: _____ Request Single Room: _____

(This year, due to COVID-19, single rooms are available for an additional \$150.00).

Are You: Male: _____ Female: _____

Are you a smoker: Yes _____ No _____

(Smoking is *not* allowed in any building)

Do you have any physical handicaps and/or special dietary needs? Yes _____ No _____

Do you have any sleep issues (i.e., snoring, apnea, C-PAP, etc.)? Yes _____ No _____

If yes, please explain on reverse side.

Due to COVID-19 restrictions all participants are required to bring their own pillow and pillowcase to Wildacres and to take them home with you when you leave Wildacres.

Class Pre-Registration

See EFMLS Newsletter or Website (efmls.org/Wildacres) for Class Offerings.

You will either be able to take one 4-day class or two 2-day classes. **All participants must take classes.**

Which of the classes being offered would you like to take? **Please indicate at least 3 choices** in order of preference for each semester. You will be pre-registered for classes based on your choices, but no class placement is guaranteed. Classes are assigned on a first received, first served basis. Should your preferred class be unavailable for any reason you will be preregistered for another of your choices. **If no alternate class preference is indicated, we will pre-register you in a class of our choosing, based on availability.**

(No Registrations accepted prior to January 1, 2022)

1st Semester or 4-day class choices

1. _____
2. _____
3. _____
4. _____

2nd Semester

1. _____
2. _____
3. _____
4. _____

Mail Registration to Suzie Milligan, 931 Carmichael Rd; Owego, NY 13827-3320

If you have any questions, please contact either

Suzie Milligan, Registrar at smilligan@stny.rr.com or 607-687-5108 or

Mark Kucera, Director at mark_j_kucera@yahoo.com or 914-423-8360

WILDACRES FALL 2022 CLASS SCHEDULE

September 5-11, 2022

Class	Instructor	1st Semester	2nd Semester
Cabochons	Bernie Emery	<p>Learn to transform a piece of rock into a shiny, well-formed cabochon. You will learn the use of the trim saw as well as basics of grinding, sanding and polishing. Slabs are provided or students may use their own with approval of the instructor.</p> <p>2-day class offered first semester. No prior experience necessary.</p> <p>Please bring an apron. Safety glasses will be provided. An Optivisor and/or loupe is suggested.</p> <p>Estimated class cost \$30 per semester.</p>	<p>Learn to cut different shapes and the techniques needed to do so. Slabs are provided or students may use their own with approval of the instructor.</p> <p>2-day class offered second semester. Prerequisite: Students must have prior experience cabbing and use of the trim saw.</p> <p>Please bring an apron. Safety glasses will be provided. An Optivisor and/or loupe is suggested.</p> <p>Estimated class cost \$30 per semester.</p>
Chainmaille	Jim Hird	<p>Come be your own "Lord of the Rings." Learn the ancient art of Chainmaille while creating jewelry using unsoldered links. Basic patterns will be taught using inexpensive copper rings. Several patterns will be taught with Wildacres supplying the basic tools. You will learn why just any old commercial jump rings do not always work in all patterns. Printed handouts will be supplied for all patterns.</p> <p>Optivisors or other magnification devises are advised as they can be very helpful in working with the rings. No prior experience is necessary but some experience with using flat nosed pliers can be an advantage. Number of projects done by each student</p>	<p>Some review will be offered but the students will build upon their abilities learned in the first class. They will have the opportunity to do more advanced and additional patterns as well as working in colors and mixed material rings. As in the first class the number of projects completed will depend upon the student's mastery of the rings.</p> <p>2-day class offered the second semester.</p> <p>Basic price should be \$50 or less for each semester. Total cost will depend upon how many projects you complete and what materials you choose to work with.</p>

Chainmaille (continued)		<p>will depend upon their own abilities in manipulating the rings.</p> <p>2-day class offered the first semester.</p> <p>Basic price should be \$50 or less for each semester. Total cost will depend upon how many projects you complete and what materials you choose to work with.</p>	
Flint Knapping	Guy Meador	<p>Basic Flint Knapping will teach fracture mechanics and methodology to understand how to make stone tools. The class will include a Flintknapper starter kit with plenty of flint to get started .</p> <p>No prior experience needed. 4-day class.</p> <p>Students will need to come prepared with long pants, gloves, safety glasses, and preferably high-top shoes...I'll supply the rest .</p> <p>Fee \$130 for both semesters.</p>	Continue to practice and improve your skills
Loop N Loop	Chuck Bruce	<p>Loop n Loop Chains - basic: We will explore 2 different patterns - Roman Fold-over and Single Fold-over (Foftail) and students should be able to finish a bracelet and pair of earrings in each. (These beautiful ancient designs are quite different from chainmaille). No prior experience is needed.</p> <p>2-day class offered 1st semester.</p> <p>Safety: Closed toe shoes, good glasses/Optivisor/magnifier for detail work, eye protection suggested for some tasks, apron.</p>	<p>Loop n Loop Chains -advanced: We will explore 2 different patterns—Double Fold-over (Foftail) and Sailor's Knot. Students should be able to finish a bracelet and pair of earrings in each. (These beautiful ancient designs are quite different from chainmaille.) No prior experience is needed, but Semester 1 helpful.</p> <p>2-day class offered 2nd semester.</p> <p>Safety: Closed toe shoes, good glasses/Optivisor/magnifier for detail work, eye protection suggested for some tasks, apron.</p>

<p>Loop N Loop (continued)</p>		<p>\$80 estimated each semester. Silver prices may change. Kits contain (Fine or Sterling silver material, findings for closures and earrings) for the chains covered, a fusing block, coil cutting tool, jump ring opener, scribe for manipulating the rings, wooden draw plate and storage bags for unused rings. This fee also covers paste solder used in class. If you mess materials up, hand back to me and get new, makes learning a lot easier (without fear). Kits will also contain enough material to make 1 or 2 pair of earrings. Other kits will be available for sale, and other chain styles with kits.</p>	<p>\$80 estimated each semester. See the notes for first semester.</p> <p>Tools will be provided for use. If you have your own tools, you are welcome to bring them.</p>
<p>Soapstone Carving</p>	<p>Ken Valko</p>	<p>Soapstone Carving 101 This class will provide a general introduction to the carving of soapstone. You will develop a working knowledge of the material, tools, safe handling issues and the methods used to complete a carving. You will produce a simple piece and progress to making a more advanced sculpture of your choice. The development of your own personal style will be encouraged.</p> <p>No prior experience needed. 4-day class. Please bring a work apron, gloves and eye protection. Some may want to wear a dust mask. Optical magnification may help most folks with detail work.</p> <p>Semester cost estimate \$30.</p>	<p>Soapstone Carving 102 This is the part when you have the basic skills already and you advance to a more advanced sculpture or hone your artistic skills. Skills learned in the first semester are required.</p> <p>Please bring a work apron, gloves and eye protection. Some may want to wear a dust mask. Optical magnification may help most folks with detail work.</p> <p>Semester cost estimate \$30.</p>
<p>Viking Knit/Wire Works</p>	<p>Valerie Johnson</p>	<p>Viking Knit - You will learn a technique used nearly 1300 years ago by Viking peoples to weave a silver rope. Viking knit is also called Trichinopoly and was used to make</p>	<p>Wire Works -You will learn a sampling of techniques to make wire jewelry. You will become familiar with the techniques needed to weave, bend and twist copper and</p>

Viking Knit/Wire Works (continued)		<p>necklaces, bracelets, trim on clothing and many other decorative objects. Once you learn the skill, it is quite easy and uses few tools and supplies to create stunning chains.</p> <p>Eye protection required and an Optivisor or similar is suggested. No prior experience necessary. 2-day class offered 1st semester.</p> <p>Semester cost estimate \$50.</p>	<p>sterling silver wire to make earrings, bracelets and pendants.</p> <p>Eye protection required and an Optivisor or similar is suggested. 2-day class offered 2nd semester. No prior experience necessary. Hazard: Wire wrapping can also damage acrylic or long fingernails.</p> <p>Semester cost estimate \$60.</p>
------------------------------------	--	--	--

VISIT A SHOW OR SWAP

If you would like to see your club show, swap or other public event listed here, please send your information to the editor by the tenth of the month preceding the event.

May 16-22, 2022 – EFMLS Wildacres Workshop Spring Session. www.efmls.org/wildacres.

June 4, 2022 – Spring Mineralfest (mineral, fossil, and gem show) sponsored by the Pennsylvania Earth Sciences Association. Saturday 8:30 AM – 2:00 PM, Macungie Memorial Park, 50 N Poplar Street, Macungie, PA. Free admission. More information at mineralfest.com or contact minvamp@yahoo.com.

June 4-5, 2022 - 2022 Orange County Mineral, Gem and Fossil Show presented by the Orange County Mineral Society. 10:00 AM – 4:00 PM Museum Village, 1010 Route 17M, Monroe, New York 10950. Adults \$5, Seniors \$3, Scouts in uniform and children under 12 free. <http://www.orangecountymineralsocietynework.com>

June 4-5, 2022 – Gem Fest 2022 sponsored by the Wayne County Gem and Mineral Club, Greater Canandaigua Civic Center, 250 N. Bloomfield Road, Canandaigua, NY. Saturday 10:00 AM – 5:00 PM; Sunday 10:00 AM – 4:00 PM. Adults \$4, children under 12 free. Contact: Fred Haynes (fredmhaynes55@gmail.com), www.wcgmc.org.

July 9-10, 2022 – Annual GemWorld Show sponsored by the Gem and Mineral Society of Syracuse. Saturday 10 :00 AM – 6:00 PM, Sunday 10:00 AM – 4:00 PM Center of Progress Building, New York State Fairgrounds, 581 State Fair Boulevard, Syracuse, NY. Hourly door prize drawings, exhibits, speakers, and youth area with sluice. Donation \$7. Children under 12 free with paid adult, scouts in uniform free.

July 30-31, 2022 -- Burlington Gem and Mineral Club, 41st Annual Champlain Valley Gem, Mineral and Fossil Show, Champlain Valley Exposition, Essex Junction, Vermont. Dealers, exhibits, lectures, children’s activities, silent auctions, and door prizes. Sat. & Sun., 10:00 AM-5:00 PM. \$4 adults (16-59), \$3 seniors (60+), children under 16 free with paying adult. Refreshments available. Free parking. Handicapped accessible. Info: Lexi Boudreau at westiegirl703@gmail.com or <http://www.burlingtongemandmineralclub.org/show.html>

August 27-28, 2022 -- 55th Annual Gem and Mineral Show sponsored by the St. Lawrence County Rock & Mineral Club. Canton Pavilion, 90 Lincoln Street, Canton, New York. Friday only – At dusk, children’s fluorescent mineral hunt (lights provided); Saturday 9:00 AM – 4:30 PM (also mineral collecting trip to Powers leaving at 9:00 AM), Sunday 9:00 AM – 3:00 PM (also, Gem Tree wrapping classes). Vendors from all over

the Northeast and Canada. \$3 Adults, children 12 and under free. Free mineral kits for kids. Contact: William deLorraine at wdellie@gmail.com

September 5-11, 2022 -- EFMLS Wildacres Workshop Fall Session See information beginning on pages 10.

September 23-25, 2022 – EFMLS Annual Convention sponsored by the Central Pennsylvania Rock and Mineral Club, Harrisburg, PA.

October 7-9, 2022 – AFMS Convention, New Orleans, LA

November 19-20, 2022 – 55th Annual Gem, Mineral, Jewelry, Bead, and Fossil Show sponsored by the Gem & Mineral Society of the Palm Beaches, South Florida Fairgrounds Expo Center East, 9067 Southern Blvd., West Palm Beach,, Florida 33411, Saturday 9:00 AM – 6:00 PM, Sunday 10:00 AM – 5:00 PM,. Free Parking, 70+ dealers. Admission \$9.00, children under 12 free. 2-day admission \$14. Visit website for #1 off coupon (www.gmspb.org). Contact Barbara Ringhiser, bar4678@aol.com (561-585-2080).

TABLE OF CONTENTS

Page 1	2022 Annual Convention Completing the 2022 director/delegate registration form Election of Officers Regional VP Elections
Page 2	EFMLS Officers EFMLS President's Message
Page 3	Club Rockhound of the Year -- Officers
Page 4	Convention Director/Delegate Registration Form
Page 5	AFMS Scholarship Foundation – EFMLS Recipient What are Volunteers? Even Number Regional VP Nominations
Page 6	Letter re Regional VP Nominations – Even Numbered Regions
Page 7	Regional VP Nomination Form – Even Numbered Regions
Page 8	Safety – Safety is for Everyone Federation Eternal
Page 9	Federation Eternal – Reiven Zeleznik Another Scam Alert A Hobby of Passion
Page 10	Fall Wildacres Speaker-in-Residence: Mary Ehlers
Page 12	Wildacres Registration Form
Page 13	Fall 2022 Wildacres Class Schedule
Page 16	Visit a Show or Swap
Page 17	Table of Contents
Page 18	2020-2021 Regional Vice Presidents EFMLS Committee Chairpersons

REGIONAL VICE PRESIDENTS (RVP'S)

Region 1	Ellery Borow	1-207-547-3154	rocknellery@fairpoint.net
Region 2	Cheryl Neary	1-516-449-5341	ciervo.neary2gmail.com
Region 3	Open		
Region 4	Bill Stephens	1-302- 540-3453	bstephens@stephensv.com
Region 5	Open		
Region 6	Larry Huffman	1-828-612-4469	ldhuff314@embarqmail.com
Region 7	Joe Cooper	1-706-499-9322	jcooper@hallcounty.org
Region 8	K.C. Foster	1-561-968-5287	katrinkaper@yahoo.com

EFMLS COMMITTEES AND CHAIRPERSONS

AFMS ENDOWMENT FUND ⁽¹⁾	Larry Huffman	828-612-4469	ldhuff314@embarqmail.com
AFMS SCHOLARSHIP FOUNDATION ⁽¹⁾	Steve Weinberger	410-833-7926	cscrystals2@gmail.com
AFMS WAYS AND MEANS ⁽¹⁾	Open		
ALL AMERICAN AWARD ⁽¹⁾	Open		
AUCTION	Cheryl Neary	516-499-5341	ciervo.neary@gmail.com
AUDIT/REVIEW	Open		
BOUNDARIES ⁽¹⁾	Open		
BUDGET AND FINANCE	Bill Stephens	302-540-3453	bstephens@stephenv.com
BULLTIN EDITORS ADVISORY ⁽¹⁾	Lucy Jackson	631-289-2328	bnl1@optonline.net
BYLAWS	Open		
CLUB ROCKHOUND OF THE YEAR ⁽¹⁾	Ellery Borow	207-547-3154	rocknellery@fairpoint.net
CONSERVATION & LEGISLATION ⁽¹⁾	Bill Stephens	302-540-3453	bstephens@stephensenv.com
CONVENTION ADVISORY	Cheryl Neary	1-516-449-5341	ciervo.neary2gmail.com
CONVENTION SHOW CHAIR	Cheryl Brown	315-487-6009	gmsrocks@gmail.com
DIRECTORY	Beverly Eisenacher	717-558-9487	beisenacher@comcast.net
EACH ONE TEACH ONE AWARD	Betsy Oberheim	717-469-2243	Aoberheim3@comcast.net
EASTERN FOUNDATION FUND	Open		
HISTORIAN	Open		
INSURANCE COORDINATOR (Acting)	Ellery Borow	207-547-3154	rocknellery@fairpoint.net
JUNIOR ACTIVITIES ⁽¹⁾	Betsy Oberheim	717-469-2243	Aoberheim3@comcast.net
LEGAL ADVISORY	Open		
LIBRARIAN	Janice Kowalski	516-319-8883	janicekw@Hotmail.com
LONG RANGE PLANNING	Open		
OPERATING PROCEDURES	Open		
PARLIAMENTARIAN	RJ Harris	717-686-1600	rjharris@rjharris.com
SAFETY ⁽¹⁾	Ellery Borow	207-547-3154	rocknellery@fairpoint.net
SUPPLIES	Open		
UNIFORM RULES (Acting)	Barbara Sky	636-207-8766	bskysky@aol.com
WAYS AND MEANS	Open		
WEBMASTER	Heather Shields	845-649-9623	hmshields@optonline.com
WEB SITE CONTEST	Open		
WILDCRES WORKSHOP COMMITTEE	Steve Weinberger, Chair	410-833-7926	cscrystals2@gmail.com
	Mark Kucera, Director	914-423-8360	mark_j_kucera@yahoo.com
	Suzie Milligan, Registrar	607-687-5108	smilligan@stny.it
	Ellery Borow	207-547-3154	rocknellery@fairpoint.net
	Pamm Bryant	804-457-4698	pjbryant6@juno.com
	Lynne Emery		berniejem@outlook.com
	KC Foster	561-968-5287	katrinkaper@yahoo.com
	Val Johnson		moon@cooper.net
	John Milligan	607-687-5108	jmilligan@stny.rr.com
NOMINATING COMMITTEE	Matt Charsky	703-522-7415	matt2430@comcast.net
	Betsy Oberheim	717-469-2243	Aoberheim3@comcast.net
	Bob Livingston	315-446-4505	gemguy@Verizon.net

⁽¹⁾ EFMLS Representative to American Federation (AFMS) committee.

Updated April 28, 2022