

THE ROCKHOUND



OFFICIAL PUBLICATION OF
THE GEM AND MINERAL SOCIETY OF THE PALM
BEACHES, INC.



www.gemandmineralsociety.org

September Volume 55 Issue 2

MEMBERSHIP MEETING

**South Florida Science Center, STEM Education Center
4801 Dreher Trail North, West Palm Beach, FL 33405**

Thursday Oct. 21 @ 7:00

**WEAR YOUR HALLOWEEN COSTUME, BEST FALL
INSPIRED FASHION, OR JUST COME AS YOURSELF!**



GUEST SPEAKER IS CLAY HECKOCKS

Clay operates an on-line mineral store called Underground Treasures. Clay spoke to the club at the June meeting. This month he will speak on quartz. Quartz is one of the most common minerals found in the earth's crust, occurring in seemingly endless forms, crystal habits and colors. We'll talk about these signature characteristics and see in person examples of the incredible diversity found in the Quartz family.

**Want to sell something
at the meeting?**

Contact Arlene!

561-810-3495

**Birthstone Challenge! Bring
your best piece of OPAL or
TOURMALINE into the
Membership meeting for a
chance to win an assorted
Australian rough opals!**

Show and Tell! Bring any treasures you have made, been working on, or want to share!

THE ROCKHOUND

OFFICIAL PUBLICATION OF
THE GEM AND MINERAL SOCIETY OF THE PALM
BEACHES, INC.

www.gemandmineralsociety.org
September Volume 54 Issue 7

President's Message

Well, the year is passing Quickly! Hope you and yours have all been well!

We had a great turnout at the BBQ/Meeting last month at the Science center! Thank you to all who came and Bid on our Silent Auction! We raised \$374 for the club. I think fun was had by all! And what a display of food everyone brought. Yum!

Welcome to all of our new Members! Hope you will get involved and take advantage of our Work Shop. If you aren't certified to use machines, contact Lee Miller to schedule a class! You are missing out! It is a rewarding Hobby!

We will resume our online auction this month, items open for pre-bid at Oct.21st meeting! Clay Hecoeks will be our guest speaker and if you missed him in the spring, don't miss him this month!

Hope you have filled out and sent in your Volunteer slips for Show! We need your help! This is what keeps our club afloat. We can't do this without you!!!

We also need Officers for the 2022 board... First Vice President and Secretary. Please consider filling these positions.

Hope to see you at the Meeting on the 21st!

Arlene Lazzaro, Club President



Shop at AmazonSmile

and Amazon will make
a donation to:

Gem and Mineral Society
of the Palm Beaches

Get started

amazonsmile

(Click Here)

Amazon

Smile

Renew your 2022
membership online
or at the next
meeting

NOVEMBER 2021 GEM, MINERAL, JEWELRY, BEAD AND FOSSIL SHOW



- If you volunteer for 4 hours, there will be a benefit to be announced later this month connected to the installation banquet held in December.
- If you want to demonstrate your craft in the demonstration area of the show, contact:
Kelly Azor, 561-635-7619, kelly.azor@palmbeachschools.org
- We also need people to enter exhibit cases in the show. There will be judging and cash prizes will be awarded to 1st, 2nd and 3rd place exhibits, contact:
Clara Pflueger at 201-566-6492, cmp682004@yahoo.com

This year we're advertising the show in more places than we've ever done before. Some new places are the Cultural Council of the Palm Beaches, the Channel 5 weekend calendar, and the mindat website. Amelia Homan has already started boosting the show on Facebook. That advertising in 2019 raised attendance over 2018 by over 30%!!

We'll have a new speaker from the Palm Beach Museum of Natural History who will give talks about the evolution of elephants and saber toothed cats.

All vendor spaces are filled at this time and there's a waitlist.

We'll have several new vendors this year. Again, please volunteer. The show finances the club for the year.

Call or send an email to:
Dianna Ray 561-707-6753
diannar@toojays.com

or

Barbara Ringhiser 561-379-4307
bar5678@aol.com

or

You can mail the volunteer form (included in this newsletter) to
GMSPB, Inc
P. O. Box 18095
West Palm Beach, FL 33416

The Rockhound

Official publication of the Gem & Mineral Society of the Palm Beaches, Inc.

Name _____ Phone _____

Best Time to Call _____ Email _____

Positions Interested In _____

Please circle the shifts for which you are available:

Thursday, Nov. 18 (set-up)	9-11am	11am-1pm	1-3pm	3-5pm
Friday, Nov. 19 (set-up, lunch)	9-11am	11am-1pm	1-3pm	3-5pm
Saturday, Nov. 20	9-11am	11am-1pm	1-3pm	3-6pm (3 hours)
Sunday, Nov. 21	10 - Noon	Noon - 2pm	2 - 5pm (3 hours)	5 - ?pm (take down)

The Gem & Mineral Society of the Palm Beaches, Inc.

Is proud to present our

54th ANNUAL

Gem, Mineral, Jewelry, Bead and Fossil Show

Featuring exhibits, speakers & prize drawings!

November 20—21, 2021

South Fl. Fairgrounds/ Expo Center East

9067 Southern Blvd. / West Palm Beach, FL 33411



Find us on



@gemandmineralspb



@gemandminerals



@gemandminerals

ADULTS \$9
2-DAY PASS \$14
CHILDREN
UNDER 12 FREE

Saturday 9AM to 6PM

Sunday 10AM to 5PM

www.gmspb.org

GEM MINING

SPIN-THE-WHEEL GAME

(suggested donation \$1/spin)

GEODE CRACKING

FREE PARKING

PRIZE DRAWINGS

DEMONSTRATIONS

SPEAKERS

EXHIBITS

FOSSIL DIG

FACE & ROCK PAINTING

Proceeds from this event support
GMSPB INC (a 501(c)(3) Corp.)

The Gem & Mineral Society of the Palm Beaches, Inc.

Present this Coupon for \$1.00 OFF*ONE ADULT ADMISSION

(Feel Free to Copy this Coupon)

LIMIT ONE COUPON

PER PERSON

*Not Valid

With Any Other Discount

ROCK

VOLUNTEERS NEEDED FOR ANNUAL SHOW!

November 20th and 21st, the weekend of our annual show, will be here before we know it!! Our 54th!!! That means it is time to start thinking about volunteering NOW. Here's a list of volunteer positions and the duties required. YOU can make a difference! Without you, our society members, it would be impossible to fill the many time periods necessary to make the 2021 show the best show yet! Over 100 volunteer shifts need to be filled.

THE CLUB CANNOT RUN WITHOUT THE PROCEEDS FROM THE SHOW!!

SET UP CREW- THURSDAY NOV.18

- Approximately 6 people are needed to move tables around and set up each booth area. We will be supervising Fair- grounds help in the placement of tables according to our floor plan. Also, we will be able to do the Society's setup on Thursday. We have hired help to do the heavy lifting, but we still need members to assist in directing helpers on where unloaded materials go at the fair grounds. Materials such as our display cases, from the storage unit, must be loaded in the rented truck, and brought to the Fair grounds, unloaded and set-up. We will also be setting up the flume.

SET UP/TAKE DOWN- FRI NOV.19 AND SUN. NOV. 21

- As many volunteers as we can get are needed to set-up during the day on Friday and to take-down after the show from 5:00 PM on Sunday. Friday, the display cases need to be assembled, as well as many odds and ends jobs too numerous to go into here. On Sunday, after the show is over, everything must be packed up, loaded in the truck, and delivered back to the storage area. Again, we have hired help to do the heavy lifting, but we still need members to assist in directing helpers on where materials go to be loaded into the truck. We also will need some people to go to the storage location to direct the hired help on where to put the unloaded materials

VOLUNTEERS NEEDED FOR ANNUAL SHOW!

TICKET TAKERS- SAT NOV. 20 AND SUN NOV. 21

- Two people are needed for each 2-hour time slot. Responsibilities include taking tickets at the entrance doors, tearing the ticket in half, depositing one half in the box, and giving the second half to the guest. This position requires either sitting on a stool or standing. Requirements include a pleasant, friendly, helpful, courteous, and kind personality. At times, ticket takers are very busy. This is a very important position because ticket takers are the “first impression” that people get of our society.

INFORMATION TABLE- SAT NOV. 20 AND SUN NOV.21

- Three people are necessary for each 2-hour time slot. Responsibilities include answering questions concerning the show, checking in volunteers and giving them their badges and providing information about our society's activities. Information attendants should be able to direct visitors and provide information about everything from who is in charge, to where a particular dealer is located. This position requires sitting at the information desk. The ability to be pleasant and helpful, without getting flustered, is important.

SCHOLARSHIP FUND

PRIZE DRAWING -SAT NOV.20 AND SUN NOV.21

- Two people per 2-hour time slot are needed. Responsibilities include encouraging people to purchase tickets for the prize drawing of the many items available. It is extremely important to be friendly, inviting, cheerful, and encouraging without being insistent. This position requires some standing. The main objective is to point out the items that may be won with only a \$1.00 ticket

VOLUNTEERS NEEDED FOR ANNUAL SHOW!

SHOW SECURITY- SAT NOV. 20 AND SUN NOV.21

- Two to four people are needed for each 2-hour time slot. Responsibilities are to observe people, watch for those acting in a disorderly manner (for example, drunk, smoking, or shoplifting), and report it to Show Chairman, Committee Chairperson, Fairgrounds Security, or Armed Security. Show Security guards should NEVER confront or accuse anyone. They ONLY report the incident. Greeting the public in a friendly manner is also important. This position requires walking around or standing. PLEASE DO NOT SHOP OR SIT DOWN AND EAT DURING YOUR SHIFT.

DEMONSTRATIONS- SAT NOV. 20 AND SUN NOV.21

- People are needed to demonstrate their skills during each 2-hour time slot. The area is large enough for several demonstrators to present simultaneously. This is the opportunity to greet the public and show-off by participating in beading, stained glass, wire wrapping, chain making, or any other lapidary skills. If you are interested in volunteering to demonstrate at the show, please contact demonstration coordinator *Kelly Azor-Anderson at 561-635-7619*

LUNCH ON SET UP DAY- FRIDAY NOV. 19

- Lunch will be served to the dealers, society members, and fairgrounds workers on Friday, set-up day. We need someone who will shop for the supplies (we have a list - sandwich makings, drinks, salad, plates, utensils, donuts, coffee, etc.) Everyone makes their own sandwiches. You would be advanced funds for shopping. Serving is buffet style. We need a couple of volunteers there to oversee the buffet between 9am and 5pm - 2 hour shifts.

VOLUNTEERS NEEDED FOR ANNUAL SHOW!

MINING, GEODE CRACKING, WHEEL SPIN GAME, KIDDIE KORNER- SAT NOV. 20 AND SUN NOV 21

We need the following people for each 2-hour time slot to run the mining area effectively. Duties include:

- 2 people working together to collect money and use an iPad for credit card payments, enter inventory on an iPad and give out tickets
- 1 person to crack geodes
- 1 person for working the Spin-the-Wheel game and for keeping the table stocked with prizes. The game involves a table marked with squares that correspond to numbers on the wheel. The player wins the prize in the square matching the number on the wheel.
- 1 person to identify gemstones at the flume area. Volunteers will be briefed on what gemstones are available in the mine. There will be cards available with gemstone samples to aid in identification if participants request the information.
- 1 person to help visitors select geodes.
- 1 person to fill bucket bags and fill buckets as needed.
- 1 person to keep the flume running smoothly, moving used gravel, handing out screens, etc.
- 1 person to man the station for children of all ages. There will be a face painter in this area. Activities include rock painting. Requirements for volunteers include being child oriented, interactive, very patient and able to be physically active (no sitting).

This is a very active area and these volunteer positions, with few exceptions, are not sedentary positions.

Please remember, if you commit to an assigned position, please perform those duties unless asked to temporarily work in an extra busy area.

If you really want your choice of positions, remember to contact us early, it is first come first serve. Turn the form in at any upcoming Membership meeting, Email, phone or mail:

Dianna Ray

561-707-6753

countrycutie29@aol.com

OR

Barbara Ringhiser

561-379-4307

bar5678@aol.com

By mail: GMSPB Volunteers

PO Box 18095

West Palm Beach, FL 33416-

8095





**HAPPY
BIRTHDAY!**

September

Amanda Gimlin

Amelia Homan

Barbara Ringhiser

Elaine Durow

Daniel Pecoraro

Sheila Krichman

Michelle Renné

Lee Miller

October

Kelly Azor

Richard Brayman

Linda Hersh

Daniel Jacobson

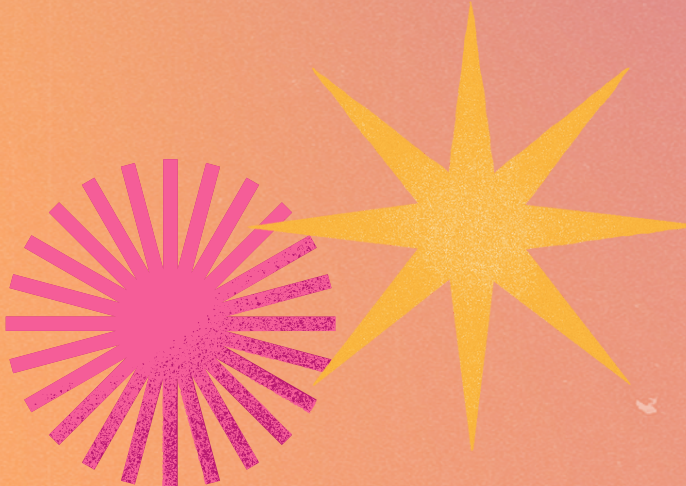
Ellen Jean

Arlene Lazzaro

Amber Lawson

Alberto Martin

Risa Truglio



September Meeting and BBQ



TRI-COUNTY ROCK-SWAP



Crawles Mountain



DONATIONS

NEEDED

For Online Auction

LOOKING FOR:

- **SPECIMENS**
- **BEADS**
- **TOOLS**
- **CABOCHONS**
- **BOOKS**
- **EQUIPMENT**
- **OLD JEWELRY**
- **NEW JEWELRY!**
- **HANDMADE ITEMS**

Please bring donations by during open shop hours



OCTOBER BIRTHSTONE

OPAL

****Remember to bring your best OPAL or TOURMALINE piece to the OCTOBER membership meeting on the 21st, for our ongoing birthstone challenge!****



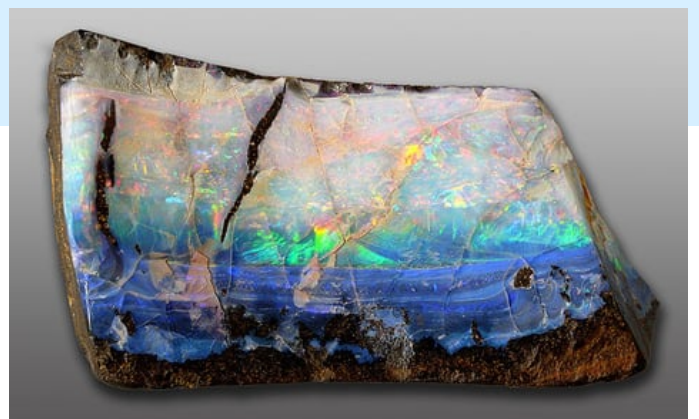
The opal is a fragile hydrated silica material, made of submicroscopic silica spheres held together by more silica and water. It is a soft stone, easily altered in appearance by changes in heat and pressure. This mineral contains varying amounts of water within it that determine the appearance of the gemstone. When water evaporates out of an opal, the stone appears slightly smaller and the stress of the evaporation creates cracks on it.

Opals are formed in near-surface volcanic rocks, within cavities and cracks. In sedimentary volcanic ash rock, percolating water in the ground dissolves silica that eventually precipitates to form the opal, sometimes becoming the replacement material for fossils – shells, bones, wood – whose original material had dissolved away.

Opals are famous for their “play of colors” – many stones flash the colors of the rainbow when moved, due to the interference of light on small cracks and other internal structural differences. Opals also have characteristic colors due to impurities within the stone. The milky or pearly appearance of some opals are due to inclusions of tiny gas bubbles. Yellows and reds betray the presence of iron oxides. The spectacular black opals that sometimes flash green, blue and red get their color from magnesium oxides and organic carbon within the stone. Perhaps the most valuable opal pattern is the “harlequin,” large angular patches of red, yellow and green resembling the checks on a clown’s costume.

The principal source of opals is Australia, noted for its magnificent black opals. Fire opals were first mined in Mexico, and continue to be produced today. In the United States, brilliant fire opals are also found in Nevada. Other commercial sources of opal are Brazil, Honduras, Nicaragua, Guatemala, Japan and Ireland.

- Color: Colorless, white, yellow, red, orange, green, brown, black, blue, pink
- Crystal habit: Irregular veins, in masses, in nodules
- Cleavage: None
- Fracture: Conchoidal to uneven
- Mohs scale hardness: 5.5–6
- Luster: Subvitreous to waxy
- Streak: White
- Diaphaneity: opaque, translucent, transparent
- Specific gravity: 2.15+0.08–0.90
- Density: 2.09 g/cm³
- Polish luster: Vitreous to resinous[1]
- Optical properties: Single refractive, often anomalous double refractive due to strain
- Refractive index: 1.450+0.020–0.080
Mexican opal may read as low as 1.37, but typically reads 1.42–1.43
- Birefringence: none
- Pleochroism: None
- Ultraviolet fluorescence: black or white body color: inert to white to moderate light blue, green, or yellow in long and short wave, may also phosphoresce, common opal: inert to strong green or yellowish green in long and short wave, may phosphoresce; fire opal: inert to moderate greenish brown in long and short wave, may phosphoresce[1]



OCTOBER BIRTHSTONE

TOURMALINE

****Remember to bring your best OPAL or TOURMALINE piece to the OCTOBER membership meeting on the 21st, for our ongoing birthstone challenge!****



The alternate birthstone for October is the tourmaline, a gemstone that exhibits the broadest spectrum of gemstone colors. Gem-quality forms of this mineral have in the past been misidentified as rubies, emeralds and sapphires. In fact, a famous tourmaline—the size of a pigeon’s egg—belonging to the Russian Empress Catherine the Great was long thought to be a ruby. The name of this gemstone is believed to derive from the Singhalese (Sri Lankan) word “toramalli,” a term applied to yellow, green or brown stones, that means “something little out of the earth.”

Tourmaline is a complex aluminous borosilicate mineral built of crystals with complicated aggregations of sodium, aluminum, boron, oxygen, hydrogen and silicon atoms. Other metals are also present within the crystal structure, and are responsible for the characteristic colors of the gemstones. Pink, for example, is due to the presence of manganese, while ferrous iron, chromium or vanadium betray their presence as green gemstones.

Most tourmalines are found in a myriad of colors: yellow, green, red, blue, pink, brown, black. Some even have bi-colored properties. A valued bi-colored variety of tourmaline, found in Brazil, is called the “watermelon.” The outer edges of the gem are green, transitioning to a transparent white zone that gives way to a pink or light red interior.

Tourmaline has an unusual property. When it is warmed or rubbed, it attracts small bits of paper, lint and ash. This occurs because the gem becomes charged with static electricity. In fact, Benjamin Franklin used this gem in his studies of electricity. Maintaining a tourmaline exhibit at museums requires frequent cleaning of the gemstone because heat from lights of the display case create a charge in the stone that attracts dust.

Compared with other gemstones, tourmalines are a relatively recent discovery. Hence, it lacks the rich lore that accompanies many other precious gems. However, among some people, the stone is known as the “peace stone,” believed to dispel fear and make its wearer calm.

- Color: Most commonly black, but can range from colorless to brown, red, orange, yellow, green, blue, violet, pink, or hues in between; can be bi-colored, or even tri-colored; rarely can be neon green or electric blue
- Crystal habit: Parallel and elongated. Acicular prisms, sometimes radiating. Massive. Scattered grains (in granite).
- Cleavage: Indistinct
- Fracture: Uneven, small conchoidal, brittle
- Tenacity: Brittle
- Mohs scale hardness: 7.0–7.5
- Luster: Vitreous, sometimes resinous
- Streak: White
- Diaphaneity: Translucent to opaque
- Specific gravity: 3.06 (+.20 -.06)
- Density: 2.82–3.32
- Polish luster: Vitreous
- Optical properties: Double refractive, uniaxial negative
- Refractive index: $n_w=1.635-1.675$ $n_e=1.610-1.650$
- Birefringence: -0.018 to -0.040 ; typically about .020 but in dark stones it may reach .040
- Pleochroism: Typically moderate to strong, Red: definite; dark red, light red, Green: strong; dark green, yellow-green, Brown: definite; dark brown, light brown, Blue: strong; dark blue, light blue
- Dispersion: .017
- Ultraviolet fluorescence: Pink stones—inert to very weak red to violet in long and short wave
- Absorption spectra: Strong narrow band at 498 nm, and almost complete absorption of red down to 640 nm in blue and green stones; red and pink stones show lines at 458 and 451 nm as well as a broad band in the green spectrum





OPEN SHOP IS AVAILABLE
FOR LAPIDARY, METAL WORK,
ENAMELING, FUSED GLASS,
CLASSES AND USE OF THE
LIBRARY!

SHOP FEES

\$7 FOR UP TO THREE HOURS

\$10 FOR THREE HOURS AND LONGER

SHOP HOURS & STEWARDS

Mondays 10:30am - 5:00pm

Samantha Lazzaro, Shop Steward
631-764-6556

Wednesdays 12:00pm - 3:00pm

Lo Rain Dudley, Shop Steward
561-827-5793

Thursdays 12:00pm - 3:00pm

Lee Miller, Shop Steward
561-329-8872

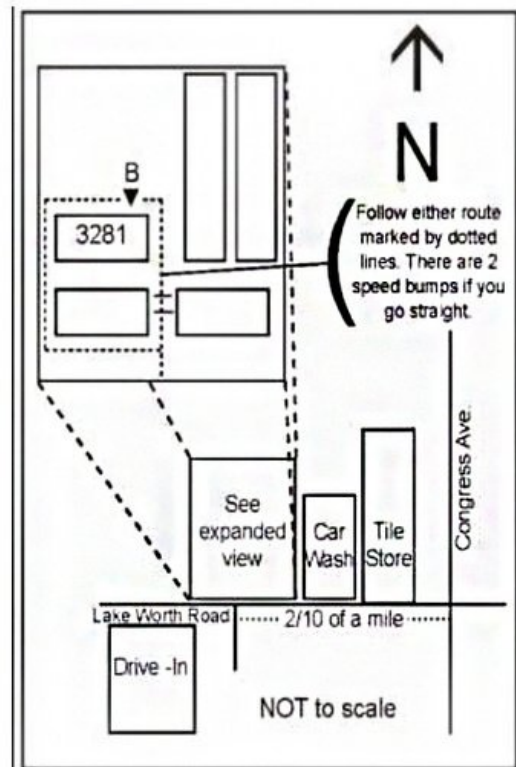
Fridays 12:00pm - 3:00pm

Lo Rain Dudley, Shop Steward
561-827-5793

Saturdays 10:00 am-2:00 pm

Lee Miller, Shop Steward
561-329-8872

Street address of the shop is:
3281 Lake Worth Road, Suite B,
Lake Worth, FL 33461



IMPORTANT! Members must complete a 6-class Certification Class before using the *cabbing equipment*. This class runs for six consecutive weeks for 3 hours each week to provide safety instructions and cabbing techniques. If you received training elsewhere, you will still need to demonstrate your proficiency before using shop equipment. For information on cabbing certification please call Lo Rain Dudley or Lee Miller

You must be also be certified to use the *kiln*! For kiln certification and classes, please contact Samantha Lazzaro. At the present time, kiln use is limited to Monday Open Shop Hours.

Masks are not required for fully vaccinated members. If you are not vaccinated, a mask and frequent use of hand sanitizer is required. You will be asked to sign a one-time liability waiver and be given a copy of the shop rules.

Always sign in and out of the log book and complete the information on the sign in sheet.

AVAILABLE CLASSES

Intro to Metalsmithing: Debbie Kashdan (561)738-6524 *\$TBD*

Cabochon Making, Six 3-hr sessions: Lee Miller (561)329-8872
\$75 + \$20 materials fee

Cold Connections Class Series: Arlene Lazzaro (516)810-3495

- **Explosion Pendant** *\$50+\$35 materials fee*
 - **Cold Forming Bracelet w/Beveled Stone Setting** *\$50+\$35 materials fee*
 - **Scrapbook Bracelet (rivets)** *\$50+\$35 materials fee*
 - **Metal Etching & Air Chasing Bracelet** *\$50+\$40 materials fee*
 - **3D Pendant w/Druzy Stone Slice NEW!** *\$50+\$40 materials fee*
 - **Black Coral** *\$50+\$50 materials fee*
-

Enameling: Samantha Lazzaro (561)372-2359 *\$40 + \$50 materials fee*

Flat Lap: Lee Miller (561) 329-8872 *\$40 + \$10 supplies fee*

Gem Tree: Dianna Ray (561)707-6753 *\$TBD*

Metalsmithing- Alien Prong Ring: Arlene Lazzaro (516)810-3495
\$50 + \$15 materials fee

Viking Knit: Lo Rain Dudley (561)827-5793 *\$Contact Instructor*

Kumihimo: Lo Rain Dudley (561)827-5793 *\$Contact Instructor*

Mineral Study Group with K.C. Foster

K.C. Foster will help you identify rocks, minerals or gemstones that you have. Please take a photo or two with:

- A ruler or coin for size.
- Information on where it was found and
- What you think it might be.

You can email K.C. at:

katrinkaper@yahoo.com.



Electrical Consulting Services, Inc. Serving South Florida Since 1990

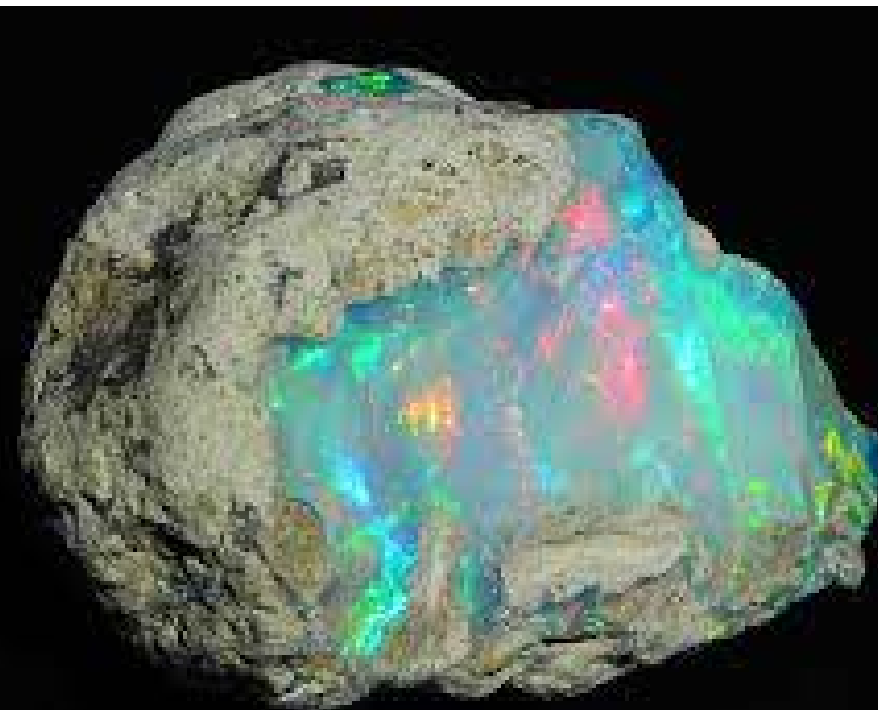
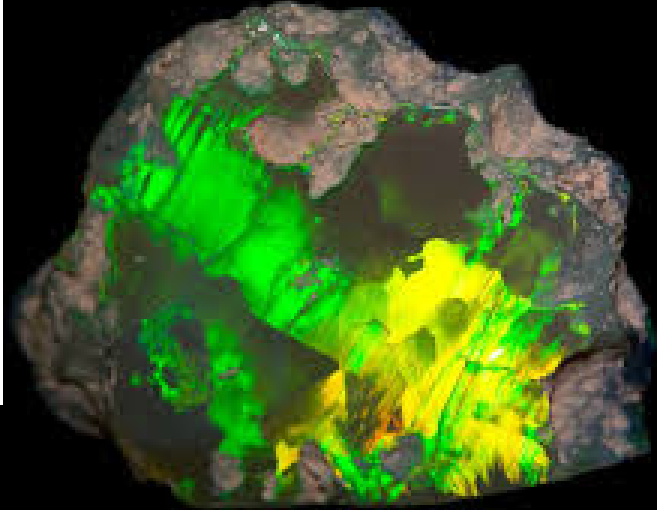


A BIG THANK YOU goes out to **Electrical Consulting Services, Inc.** for donating their time and skill to our club to help our shop with some electrical issues!

Electrical Consulting
Services, Inc
1720 Upland Road West
Palm Beach, FL 33409
T:561-478-0100
ecsinc.biz



Electrical Consulting Services, Inc. Serving South Florida Since 1990



MEMBERSHIP DUES

Junior Membership—\$10.00
(Under age 18)

Single Membership—\$20.00
(Over age 18)

Family Membership—\$30.00
(Includes 2 adults and children under age 18 in a single household)

Membership expires on December 31st each year and is due by the end of February of the new year.

To renew your membership, make your check or money order to:

Gem & Mineral Society of the Palm Beaches, Inc. and mail to:

Membership Coordinator
Gem & Mineral Society
P.O. Box 18095
West Palm Beach, FL 33416-8095

NAME TAGS

Available from:
Ace Marking Devices (\$12.00)
3308 S. Dixie Hwy.
West Palm Beach, FL 33405
561/833-4073

SHOP FEES

Up to 3 hours shop time - \$7
Over 3 hours shop time - \$10

SEE CALENDAR FOR OPEN SHOPS

SHOP STEWARDS

Head Shop Steward:

Lee Miller 561/329-8872
Dennis Rietwyk 561/255-0292
Samantha Lazzaro 561/372-2359
Lo Rain Dudley 561-827-5793

Shop Phone:
561/585-2080

COVID-19 SAFETY INFORMATION

Per The South Florida Science Center pertaining to our monthly meeting place:

As of July 27th, 2021: Per recent CDC guidelines driven by scientific evidence, face coverings are no longer required for fully vaccinated guests, but are recommended. The CDC continues to strongly recommend the use of face coverings indoors, despite vaccination status.



The Gem & Mineral Society of the Palm Beaches, Inc. is a 501 (c) (3) corporation and a member of the Eastern and Southeastern Federations of Mineral and Lapidary Societies, and is affiliated with the American Federation of Mineralogical Societies. Monthly meetings are held on the third Thursday of the month except for December, which is held on the second Thursday. Meetings start at 7:30 PM at the former Garden Club building (across from the Science Center), 4800 Dreher Trail North, West Palm Beach, FL 33405.

The opinions, beliefs and viewpoints expressed by the various authors in this newsletter do not necessarily reflect the opinions, beliefs and viewpoints of the Gem and Mineral Society of the Palm Beaches ("GMSPB"). GMSPB does not verify any claims made for accuracy, and is not responsible for the views expressed. Nothing contained herein constitutes any sort of professional advice, including but not limited to legal, medical, or financial advice. Any action you take based on information published in The Rockhound is strictly at your own risk.

Wine

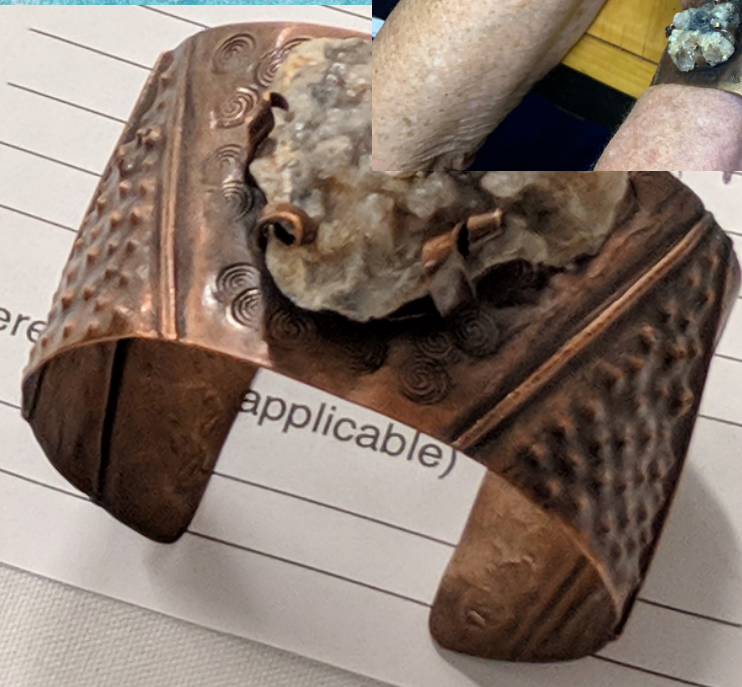
AND PINE



Interested in Wine and
Pine 3?
Contact Gale Langford



Copper Bracelet Class By Arlene





Club Purpose

To associate persons of the Palm Beach area of Florida who are interested in earth sciences, to work together as an organization in the gathering, cutting, displaying, and studying of rocks, shells, artifacts, and any kind of scientific objects of interest to the individual and the organization, to promote community interest in these objects.

The Gem and Mineral Society of the Palm Beaches is part of a national hierarchy of mineralogical societies:

The American Federation of Mineral Societies— amfed.org—is an organization of Regional Federations, the Regional Federations are our parent clubs:

- Eastern Federation of Mineralogical and Lapidary Societies: efmls.org
- Southeast Federation of Mineralogical Societies: amfed.org/sfms

The Gem and Mineral Society of the Palm Beaches has several Neighbor Clubs:

- Florida Gold Coast Gem and Mineral Society (Broward County) :
- St. Lucie County Rock and Gem Club:
- Treasure Coast Rock and Gem Society (Indian River County) :
- Miami Mineralogical and Lapidary Guild: mmlg-inc.org

All of these Clubs have extensive websites with articles, information, and newsletters of interest to all

Mineral specimens in photos of the: *Chrysocolla*, *Vanadinite*, *Azurite Sun*, and *Stibnite* were shown at July's membership meeting discussion by **Clay Hecoeks. UnderGround Treasures , UGTreasures.com**

AFMS CODE OF ETHICS

I will keep informed on all laws, regulations or rules governing collecting on public lands and will observe them.

I will, to the best of my ability, ascertain the boundary lines of property on which I plan to collect.

I will use no firearms or blasting material in collecting areas.

I will cause no willful damage to property of any kind— fences, signs, buildings.

I will leave all gates as found.

I will build fires in designated or safe places only and will be certain they are completely extinguished before leaving the area.

I will discard no burning material—matches, cigarettes, etc.

I will fill all excavation holes, which may be dangerous to livestock.

I will not contaminate wells, creeks or other water supply.

I will cause no willful damage to collecting material and will take home only what I can reasonably use.

I will practice conservation and undertake to utilize fully and well the materials I have collected and will recycle my surplus for the pleasure and benefit of others.

I will support the rockhound project H.E.L.P. (Help Eliminate Litter Please) and will leave all collecting areas devoid of litter, regardless of how found.

I will cooperate with field trip leaders and those in designated authority in all collecting areas.

I will report to my club or Federation officers, Bureau of Land Management, or other authorities, any deposit of petrified wood or other materials on public lands which should be protected for the enjoyment of future generations for public educational and scientific purposes.

I will appreciate and protect our heritage of natural resources.

I will observe the "Golden Rule," will use "Good Outdoor Manners" and will at all times conduct myself in a manner which will add to the stature and public image of rockhounds everywhere.

The Rockhound Copyright 2021

by the Gem & Mineral Society of the Palm Beaches, Inc.

Permission to reprint original material herein not otherwise copyrighted is granted provided that credit is given to both author and publication. Articles not bylines are by the Editor.

FAIR USE NOTICE. This publication may contain copyrighted material the use of which has not been specifically authorized by the copyright owner. We are making such material available in our efforts to advance the educational understanding of the amateur jewelry fabrication and rock collecting hobbies. We believe this constitutes a 'fair use' of any such copyrighted material as provided for in section 107 of the U.S. Copyright Law. If you wish to use material from this publication for commercial or purposes of your own that go beyond 'fair use', you must obtain permission from the copyright owner.