

# THE ROCKHOUND

OFFICIAL PUBLICATION OF  
THE GEM AND MINERAL SOCIETY OF THE PALM  
BEACHES, INC.

[www.gemandmineralsociety.org](http://www.gemandmineralsociety.org)

August Volume 54 Issue 6



## MEMBERSHIP MEETING

**Thursday, August 19th**  
**at 7:00 pm**  
**4801 Dreher Trail North**  
**West Palm Beach, FL**  
**33405**

***Bill Stephens, a professional Geologist will give a live, online, interactive talk about his experience with the Hogg Mine in Georgia!***

**Birthstone Challenge!**  
Bring your best piece of Peridot, or banded agate (sardonyx) into the August Membership meeting for a chance to win a slab of rhodochrosite and gemmy polished peridot!



**Want to Sell at the Meeting?**  
**Contact Arlene Lazzaro:**  
**(516)810-3495**

# THE ROCKHOUND

OFFICIAL PUBLICATION OF  
THE GEM AND MINERAL SOCIETY OF THE PALM  
BEACHES, INC.

## President's Message

Well, we are past the halfway mark for this year and I feel the club is getting back on track! Hopefully everyone has stayed well and has been vaccinated or is thinking about it! A few changes to the board I think you should know about... Amanda Gimlin has taken over as Newsletter editor and Laura Phillips will now be in charge of Membership! I would like to Thank Laura for her devotion and impeccable detail to our Newsletters in the past and welcome her to Membership! I know she will breathe new life into it! David Taylor has been our Membership Secretary for the last few years and we would also like to thank him for his time in that position. A big Welcome to Amanda Gimlin!!

With this said, I implore you to come to the monthly Membership meetings! They have been informative and interesting and I am trying to make them more social! It's important that you attend to get the most out of your membership! All of our activities and classes are announced at the meetings, and those who are there get first crack at participating if numbers are limited! Incentives include the Birthstone Challenge and Attendance Raffle! We have sales at all meetings and a show and tell table so you can see what other members are up to! Plus, a Silent Auction, and the Online Auction Items for viewing and pre-bids!! You won't be bored! And thanks to Gale Langford, we have religiously had a field trip every month! Our social "Wine and Pine" was a big success and we are planning another get together for the near future! A BBQ/Auction is planned for the September meeting, which will be on a Sunday instead of Thursday. Keep an eye out for emails to stay up to date! Take advantage of the work shop! It is up and running and waiting for your visit. We have open shop 5 days a week to be available to all! The Show is a go and we need you to volunteer! This is what keeps our club financially stable and this year we need to make up for last year! The auctions only cover a fraction of our expenses! PLEASE, participate and get involved! Your club has a lot to offer. Any suggestions will be fully considered.

Arlene Lazzaro, Club President

[www.gemandmineralsociety.org](http://www.gemandmineralsociety.org)  
August Volume 54 Issue 6

## LETTER FROM THE EDITOR

*I am so happy to have been given the challenging, but rewarding experience of handling GMSPB's newsletter. I know I may need a bit of patience while I navigate all the ins and outs, but please feel free to reach out to me with any concerns or suggestions! Here's to new experiences, new friends, cool rocks, and tons of FUN! CHEERS!*

*Best Wishes,  
Amanda Gimlin, GIA G.G.  
GMSPalmBeaches@gmail.com*



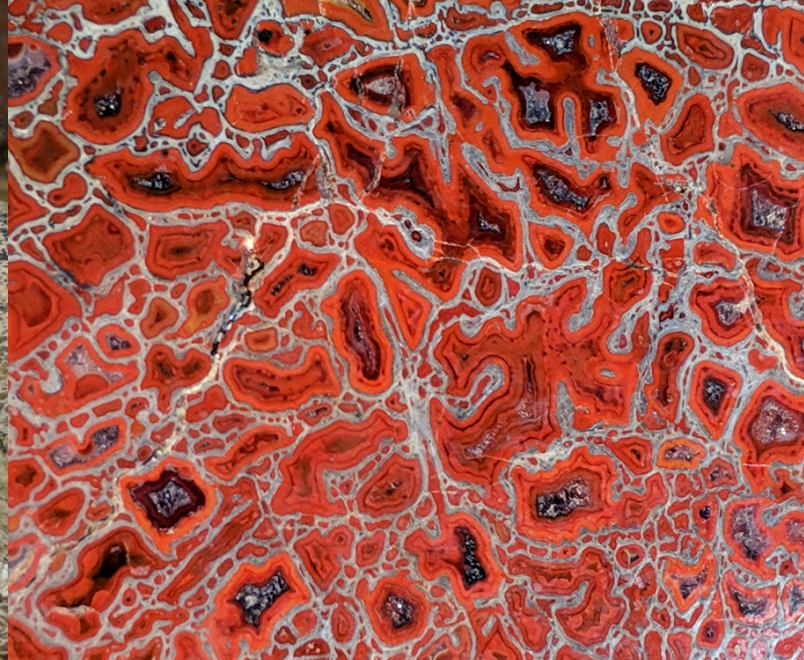
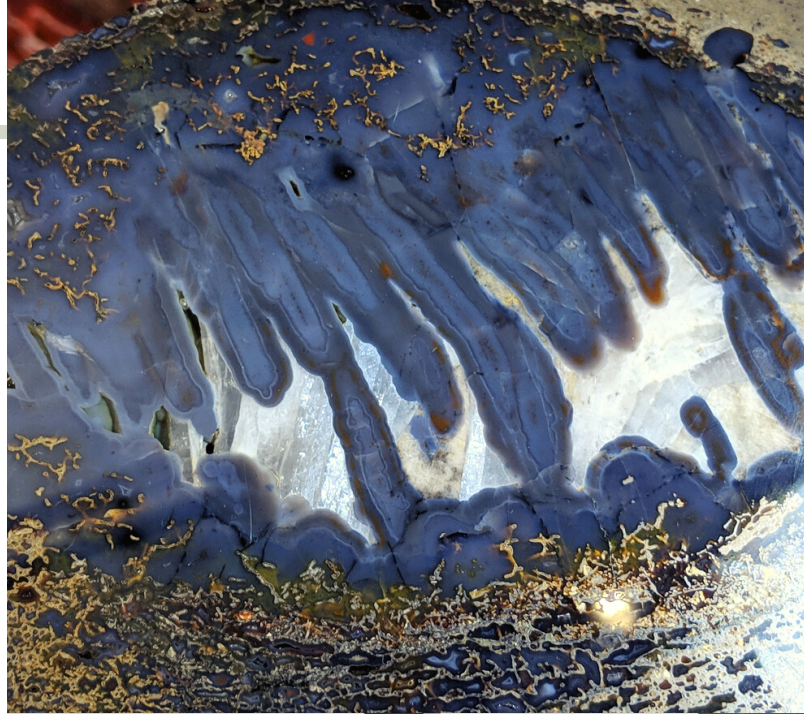


## JULY MEMBERSHIP MEETING HIGHLIGHT

### ALAN MELTZER: DINOSAUR "GEM" BONE PRESENTATION

At this last July's membership meeting, we had an incredible presentation by experienced agate and "gem" dinosaur bone collector, Alan Meltzer. We were even lucky enough to have him bring in a number of specimens (that would make some museums green with envy!) for us to enjoy in person! THANK YOU ALAN!

Found only in a couple places on Earth, the vast majority of this Jurassic age fossil is found on the Colorado Plateau, near the Four Corners intersection of Arizona, Utah, Colorado and New Mexico. Not only does gem bone make stunning, colorful specimens but it is also a valuable, rare lapidary material.





# THE ROCKHOUND

AUGUST 2021

## JULY FIELD TRIP: ALAN MELTZER'S HOUSE OF TREASURES!

Again, THANK YOU ALAN for sharing your  
breathtaking collection with all of us!





AUGUST BIRTHSTONE

# PERIDOT

***\*Remember to bring your best Peridot piece to the August membership meeting on the 19th, for our ongoing birthstone challenge!\****



Gem miners find peridot as irregular nodules (rounded rocks with peridot crystals inside) in some lava flows in the United States, China, and Vietnam and, very rarely, as large crystals lining veins or pockets in certain types of solidified molten rock. Sources for the latter include Finland, Pakistan, Myanmar, and the island of Zabargad.

Rarely, peridot can have an extraterrestrial source, being contained in meteorites that have fallen to earth.

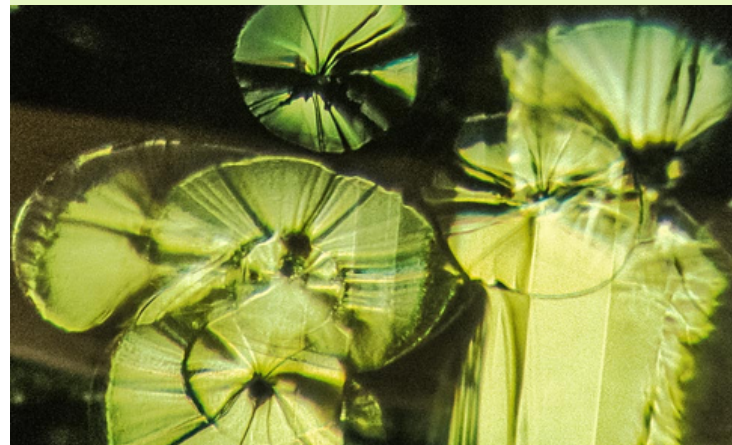
The color range for peridot is narrow, from a brown-green color to yellowish green to pure green. Yellowish green is the most common peridot color seen in jewelry.

Peridot is the gem variety of the mineral olivine. Its chemical composition includes iron and magnesium, and iron is the cause of its attractive yellowish green colors. The gem often occurs in volcanic rocks called basalts, which are rich in these two elements.

<https://www.gia.edu/peridot-description>

For more August birthstone info, visit <https://earthsky.org/human-world/august-birthstone-sardonyx-peridot/>

- Category: Silicate mineral variety
- Formula:  $(\text{Mg, Fe})_2\text{SiO}_4$
- Crystal system: Orthorhombic
- Color: Yellow, to yellow-green, olive-green, to brownish, sometimes a lime-green, to emerald-ish hue
- Twinning: Uncommon, simple twinning can occur
- Cleavage: Poor, cleavage improves with increasing iron content
- Fracture: Conchoidal
- Mohs scale hardness: 6.5–7
- Luster: Vitreous to oily
- Streak: Colorless
- Translucent to transparent
- Specific gravity: 3.2–4.3
- Refractive index: 1.64–1.70
- Birefringence: +0.036
- Pleochroism: Weak pale yellow-green to yellow, yellow to yellow orange
- Melting point: Very high
- Avoid thermal shock



Peridot may have small inclusions of biotite (brown), chromite (black), pyrope garnet (dark red), spinel (tiny octahedra) or liquid and gas-filled inclusions that resemble lilipads. The strong doubling of facet junctions and inclusions as well as the pale yellowish green color are very characteristic of peridot.



# DONATIONS NEEDED

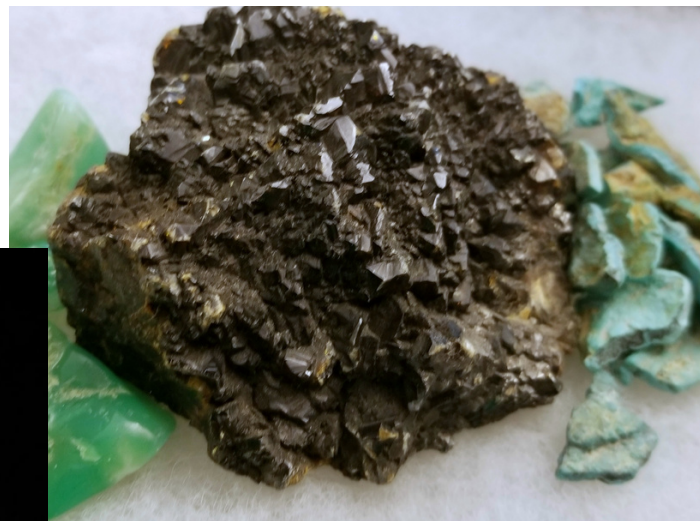
For Online Auction

## LOOKING FOR:

- **SPECIMENS**
- **BEADS**
- **TOOLS**
- **CABOCHONS**
- **BOOKS**
- **EQUIPMENT**
- **OLD JEWELRY**
- **NEW JEWELRY!**
- **HANDMADE ITEMS**

Please bring donations by during open shop hours

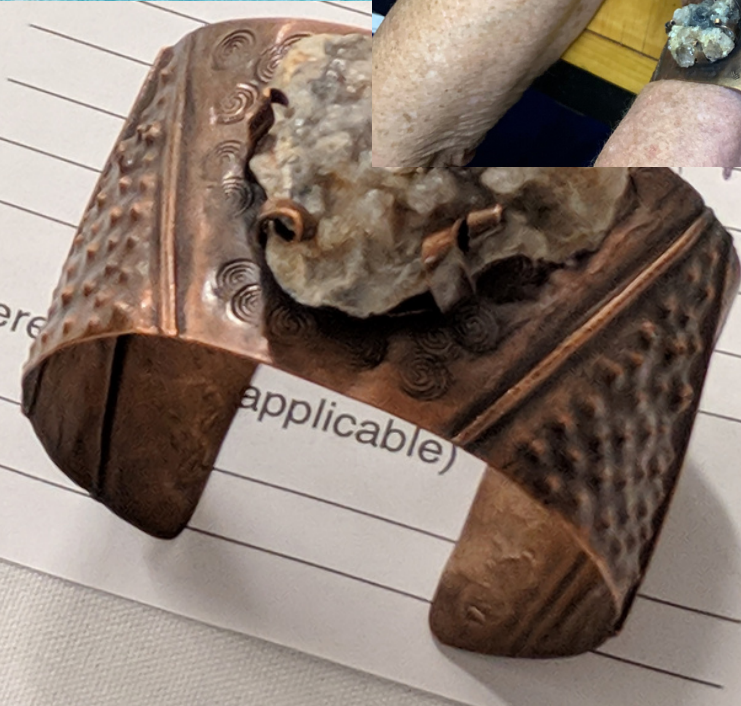
Click below for link to our online auction through [Betterworld.org](https://www.betterworld.org). Bidding begins August 20th at 5pm



**August Gem and Mineral Society of the Palm Beaches  
Auction by Gem And Mineral Society of the Palm...**



# Copper Bracelet Class By Arlene







**OPEN SHOP IS AVAILABLE**  
**FOR LAPIDARY, METAL WORK,**  
**ENAMELING, FUSED GLASS,**  
**CLASSES AND USE OF THE**  
**LIBRARY!**

**SHOP FEES**

**\$7 FOR UP TO THREE HOURS**

**\$10 FOR THREE HOURS AND LONGER**

SHOP HOURS & STEWARDS

**Mondays 10:30am - 5:00pm**

Samantha Lazzaro, Shop Steward  
631-764-6556

**Wednesdays 12:00pm - 3:00pm**

Lo Rain Dudley, Shop Steward  
561-827-5793

**Thursdays 12:00pm - 3:00pm**

Lee Miller, Shop Steward  
561-329-8872

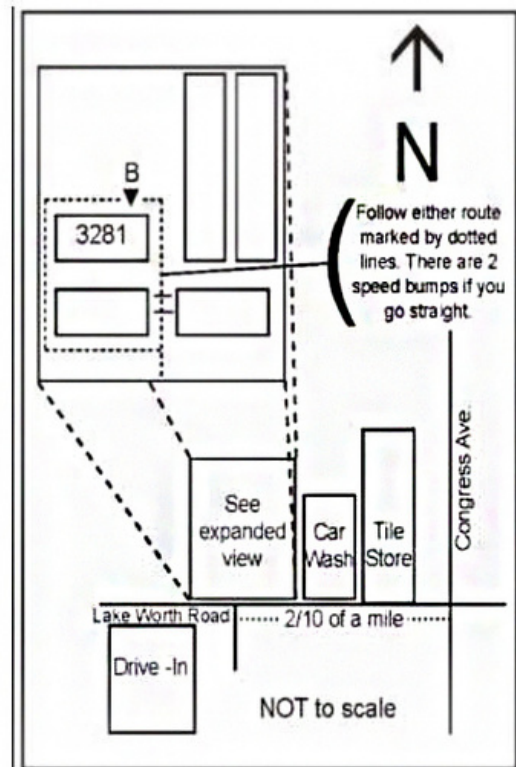
**Fridays 12:00pm - 3:00pm**

Lo Rain Dudley, Shop Steward  
561-827-5793

**Saturdays 10:00 am-2:00 pm**

Lee Miller, Shop Steward  
561-329-8872

Street address of the shop is:  
3281 Lake Worth Road, Suite B,  
Lake Worth, FL 33461



**IMPORTANT!** Members must complete a 6-class Certification Class before using the *cabbing equipment*. This class runs for six consecutive weeks for 3 hours each week to provide safety instructions and cabbing techniques. If you received training elsewhere, you will still need to demonstrate your proficiency before using shop equipment. For information on cabbing certification please call Lo Rain Dudley or Lee Miller

You must be also be certified to use the *kiln*! For kiln certification and classes, please contact Samantha Lazzaro. At the present time, kiln use is limited to Monday Open Shop Hours.

**Masks are not required for fully vaccinated members. If you are not vaccinated, a mask and frequent use of hand sanitizer is required. You will be asked to sign a one-time liability waiver and be given a copy of the shop rules.**

**Always sign in and out of the log book and complete the information on the sign in sheet.**



# AVAILABLE CLASSES

**Intro to Metalsmithing:** Debbie Kashdan (561)738-6524 *\$TBD*

---

**Cabochon Making,** Six 3-hr sessions: Lee Miller (561)329-8872  
*\$75 + \$20 materials fee*

---

**Cold Connections Class Series:** Arlene Lazzaro (516)810-3495

- **Explosion Pendant** *\$50+\$35 materials fee*
  - **Cold Forming Bracelet w/Beveled Stone Setting** *\$50+\$35 materials fee*
  - **Scrapbook Bracelet (rivets)** *\$50+\$35 materials fee*
  - **Metal Etching & Air Chasing Bracelet** *\$50+\$40 materials fee*
  - **3D Pendant w/Druzy Stone Slice NEW!** *\$50+\$40 materials fee*
  - **Black Coral** *\$50+\$50 materials fee*
- 

**Enameling:** Samantha Lazzaro (561)372-2359 *\$40 + \$50 materials fee*

---

**Flat Lap:** Lee Miller (561) 329-8872 *\$40 + \$10 supplies fee*

---

**Gem Tree:** Dianna Ray (561)707-6753 *\$TBD*

---

**Metalsmithing- Alien Prong Ring:** Arlene Lazzaro (516)810-3495  
*\$50 + \$15 materials fee*

---

**Viking Knit:** Lo Rain Dudley (561)827-5793 *\$Contact Instructor*

---

**Kumihimo:** Lo Rain Dudley (561)827-5793 *\$Contact Instructor*

---



# THE ROCKHOUND

AUGUST 2021



# AUGUST

Sun	Mon	Tue	Wed	Thu	Fri	Sat
<b>1</b>	<b>2</b> Open Shop 10:30AM - 5 PM General Work Samantha 631/764-6556	<b>3</b>	<b>4</b> <b>BOARD MEETING 7:00 PM</b>  12-3 PM Lo Rain 561/827-5793	<b>5</b> 12-3 PM Lee 561/329-8872	<b>6</b> Open Shop 12-3 PM (5-8 PM**) Lo Rain 561/827-5793	<b>7</b> Open Shop 10-2 General Work Lee 561/329-8872
<b>8</b>	<b>9</b> Open Shop 10:30AM - 5 PM General Work Samantha 631/764-6556	<b>10</b>	<b>11</b> Open Shop 12-3 PM General Work Lo Rain 561/827-5793	<b>12</b> Open Shop 12-3 PM General Work Lee 561/329-8872	<b>13</b> Open Shop 12-3 PM (5-8 PM**) Lo Rain 561/827-5793	<b>14</b> Open Shop 10-2 General Work Lee 561/329-8872
<b>15</b>	<b>16</b> Open Shop 10:30AM - 5 PM General Work Samantha 631/764-6556	<b>17</b>	<b>18</b> Open Shop 12-3 PM General Work Lo Rain 561/827-5793	<b>19</b> <b>MEMBERSHIP MEETING 7:00 PM</b>  12-3 PM Lee 561/329-8872	<b>20</b> <b>AUCTION BEGINS</b>  12-3 PM (5-8 PM**) Lo Rain 561/827-5793	<b>21</b> Open Shop 10-2 General Work Lee 561/329-8872
<b>22</b>	<b>23</b> Open Shop 10:30AM - 5 PM General Work Samantha 631/764-6556	<b>24</b>	<b>25</b> Open Shop 12-3 PM General Work Lo Rain 561/827-5793	<b>26</b> Open Shop 12-3 PM General Work Lee 561/329-8872	<b>27</b> Open Shop 12-3 PM (5-8 PM**) Lo Rain 561/827-5793	<b>28</b> Open Shop 10-2 General Work Lee 561/329-8872
<b>29</b> <b>AUCTION ENDS</b>	<b>30</b> <b>SHOW COMM MEETING 7:30 PM</b>  10:30AM - 5 PM Samantha 631/764-6556	<b>31</b>				



**SHOP OPEN  
TO MEMBERS!**

**GREAT CLASSES  
AVAILABLE!**

GMSPB PRESENTS

# ▶ GLASS FUSING CLASS WORKSHOP

▼ AUGUST 16TH  
THROUGH AUG 22ND  
10:30AM TO 4PM

**CLASS FEE : \$40 + MATERIAL FEE : \$90  
INCLUDES 2 DAYS OF CLASS AND UP TO 10  
PIECES.**

**EACH ADDITIONAL PIECE WILL BE \$10**

▶ OR ◀

**WORKSHOP FEE : \$15/DAY + \$10/PIECE OR  
BRING YOUR OWN SUPPLIES  
(LARGER PIECES MAY BE COUNTED AS MORE  
THAN 1 PIECE)**

AT THE WORKSHOP, 3281 LAKE WORTH RD. STE. B  
PLEASE CALL OR TEXT SAMANTHA AT 631-764-6556 AND LET HER  
KNOW WHICH DAY(S) YOU WOULD LIKE TO COME.





# THE ROCKHOUND

OFFICIAL PUBLICATION OF  
THE GEM AND MINERAL SOCIETY OF THE  
PALM BEACHES, INC.

[www.gemandmineralsociety.org](http://www.gemandmineralsociety.org)  
August Volume 54 Issue 6

# September BBQ

*You're  
Invited!*

**Save the date! Sunday  
September 19th 3:00pm**

A good ol' fashioned cookout!  
Hamburgers and hot dogs fresh off the grill!  
Including silent auction!  
More details at this month's membership  
meeting

## ***Broken Jewelry Challenge***

**Support our great club, clean out your  
jewelry box, and get creative!**

We will be holding a "broken jewelry  
challenge" to breathe new life into old,  
broken, and discarded pieces by  
upcycling them into beautiful new  
items.\*

Prizes will be awarded for top "new"  
pieces!

*\*Sessions will be scheduled starting in  
August. Shop fees will apply.*

## **Wine & Pine II**

TBD Wed or Thurs night,  
August 25 or 26. Sign up  
at our next membership  
meeting!



# VOLUNTEERS NEEDED FOR ANNUAL SHOW!

**November 20th and 21st, the weekend of our annual show, will be here before we know it!! Our 54th!!! That means it is time to start thinking about volunteering NOW. Here's a list of volunteer positions and the duties required. YOU can make a difference! Without you, our society members, it would be impossible to fill the many time periods necessary to make the 2021 show the best show yet! Over 100 volunteer shifts need to be filled.**

**THE CLUB CANNOT RUN WITHOUT THE PROCEEDS FROM THE SHOW!!**

## **SET UP CREW- THURSDAY NOV.18**

---

- Approximately 6 people are needed to move tables around and set up each booth area. We will be supervising Fair- grounds help in the placement of tables according to our floor plan. Also, we will be able to do the Society's setup on Thursday. We have hired help to do the heavy lifting, but we still need members to assist in directing helpers on where unloaded materials go at the fair grounds. Materials such as our display cases, from the storage unit, must be loaded in the rented truck, and brought to the Fair grounds, unloaded and set-up. We will also be setting up the flume.

## **SET UP/TAKE DOWN- FRI NOV.19 AND SUN. NOV. 21**

---

- As many volunteers as we can get are needed to set-up during the day on Friday and to take-down after the show from 5:00 PM on Sunday. Friday, the display cases need to be assembled, as well as many odds and ends jobs too numerous to go into here. On Sun day, after the show is over, everything must be packed up, loaded in the truck, and delivered back to the storage area. Again, we have hired help to do the heavy lifting, but we still need members to assist in directing helpers on where materials go to be loaded into the truck. We also will need some people to go to the storage location to direct the hired help on where to put the unloaded materials



# VOLUNTEERS NEEDED FOR ANNUAL SHOW!

## **TICKET TAKERS- SAT NOV. 20 AND SUN NOV. 21**

---

- Two people are needed for each 2-hour time slot. Responsibilities include taking tickets at the entrance doors, tearing the ticket in half, depositing one half in the box, and giving the second half to the guest. This position requires either sitting on a stool or standing. Requirements include a pleasant, friendly, helpful, courteous, and kind personality. At times, ticket takers are very busy. This is a very important position because ticket takers are the “first impression” that people get of our society.

## **INFORMATION TABLE- SAT NOV. 20 AND SUN NOV.21**

---

- Three people are necessary for each 2-hour time slot. Responsibilities include answering questions concerning the show, checking in volunteers and giving them their badges and providing information about our society's activities. Information attendants should be able to direct visitors and provide information about everything from who is in charge, to where a particular dealer is located. This position requires sitting at the information desk. The ability to be pleasant and helpful, without getting flustered, is important.

## **SCHOLARSHIP FUND**

### **PRIZE DRAWING -SAT NOV.20 AND SUN NOV.21**

---

- Two people per 2-hour time slot are needed. Responsibilities include encouraging people to purchase tickets for the prize drawing of the many items available. It is extremely important to be friendly, inviting, cheerful, and encouraging without being insistent. This position requires some standing. The main objective is to point out the items that may be won with only a \$1.00 ticket



# VOLUNTEERS NEEDED FOR ANNUAL SHOW!

## **SHOW SECURITY- SAT NOV. 20 AND SUN NOV.21**

- Two to four people are needed for each 2-hour time slot. Responsibilities are to observe people, watch for those acting in a disorderly manner (for example, drunk, smoking, or shoplifting), and report it to Show Chairman, Committee Chairperson, Fairgrounds Security, or Armed Security. Show Security guards should NEVER confront or accuse anyone. They ONLY report the incident. Greeting the public in a friendly manner is also important. This position requires walking around or standing. PLEASE DO NOT SHOP OR SIT DOWN AND EAT DURING YOUR SHIFT.

## **DEMONSTRATIONS- SAT NOV. 20 AND SUN NOV.21**

- People are needed to demonstrate their skills during each 2-hour time slot. The area is large enough for several demonstrators to present simultaneously. This is the opportunity to greet the public and show-off by participating in beading, stained glass, wire wrapping, chain making, or any other lapidary skills. If you are interested in volunteering to demonstrate at the show, please contact demonstration coordinator *Kelly Azor-Anderson at 561-635-7619*

## **LUNCH ON SET UP DAY- FRIDAY NOV. 19**

- Lunch will be served to the dealers, society members, and fairgrounds workers on Friday, set-up day. We need someone who will shop for the supplies (we have a list - sandwich makings, drinks, salad, plates, utensils, donuts, coffee, etc.) Everyone makes their own sandwiches. You would be advanced funds for shopping. Serving is buffet style. We need a couple of volunteers there to oversee the buffet between 9am and 5pm - 2 hour shifts.

# VOLUNTEERS NEEDED FOR ANNUAL SHOW!

## **MINING, GEODE CRACKING, WHEEL SPIN GAME, KIDDIE KORNER- SAT NOV. 20 AND SUN NOV 21**

**We need the following people for each 2-hour time slot to run the mining area effectively. Duties include:**

- 2 people working together to collect money and use an IPad for credit card payments, enter inventory on an IPad and give out tickets
- 1 person to crack geodes
- 1 person for working the Spin-the-Wheel game and for keeping the table stocked with prizes. The game involves a table marked with squares that correspond to numbers on the wheel. The player wins the prize in the square matching the number on the wheel.
- 1 person to identify gemstones at the flume area. Volunteers will be briefed on what gemstones are available in the mine. There will be cards available with gemstone samples to aid in identification if participants request the information.
- 1 person to help visitors select geodes.
- 1 person to fill bucket bags and fill buckets as needed.
- 1 person to keep the flume running smoothly, moving used gravel, handing out screens, etc.
- 3 people to man the 3 stations for children of all ages. There will be a face painter in this area. Activities include a cornhole game, activities about dinosaurs, and a raffle. Requirements for volunteers include being child-oriented, interactive, very patient, and able to be physically active (not sitting)

*This is a very active area and these volunteer positions, with few exceptions, are not sedentary positions.*

**Please remember, if you commit to an assigned position, please perform those duties unless asked to temporarily work in an extra busy area.**

**If you really want your choice of positions, remember to contact us early, it is first come first serve. Turn the form in at any upcoming Membership meeting, Email, phone or mail:**

Dianna Ray  
561-707-6753  
countrycutie29@aol.com  
By mail: GMSPB Volunteers  
PO Box 18095  
West Palm Beach, FL  
33416-  
8095





**The Rockhound**

Official publication of the Gem & Mineral Society of the Palm Beaches, Inc.

Name \_\_\_\_\_ Phone \_\_\_\_\_

Best Time to Call \_\_\_\_\_ Email \_\_\_\_\_

Positions Interested In \_\_\_\_\_

Please circle the shifts for which you are available:

Thursday, Nov. 18 (set-up)	9-11am	11am-1pm	1-3pm	3-5pm
Friday, Nov. 19 (set-up, lunch)	9-11am	11am-1pm	1-3pm	3-5pm
Saturday, Nov. 20	9-11am	11am-1pm	1-3pm	3-6pm (3 hours)
Sunday, Nov. 21	10 - Noon	Noon - 2pm	2 - 5pm (3 hours)	5 - ?pm (take down)



Find us on



@gemandmineralspb



@gemandminerals



@gemandminerals

**The Gem & Mineral Society of the Palm Beaches, Inc.**

Is proud to present our

**54th ANNUAL**

**Gem, Mineral, Jewelry, Bead and Fossil Show**

*Featuring exhibits, speakers & prize drawings!*

**November 20—21, 2021**

**South Fl. Fairgrounds/ Expo Center East  
9067 Southern Blvd. / West Palm Beach, FL 33411**

**ADULTS \$9  
2-DAY PASS \$14  
CHILDREN  
UNDER 12 FREE**

**Saturday 9AM to 6PM**

**Sunday 10AM to 5PM**

[www.gmspb.org](http://www.gmspb.org)

**GEM MINING**

**SPIN-THE-WHEEL GAME**

(Suggested donation \$1/spin)

**GEODE CRACKING**

**FREE PARKING**

**PRIZE DRAWINGS**

**DEMONSTRATIONS**

**SPEAKERS**

**EXHIBITS**

**FOSSIL DIG**

**FACE & ROCK PAINTING**

Proceeds from this event support

**GMSPB INC (a 501(c)(3) Corp.)**

**The Gem & Mineral Society of the Palm Beaches, Inc.**

**Present this Coupon for \$1.00 OFF ONE ADULT ADMISSION**

(Feel Free to Copy this Coupon)

**LIMIT ONE COUPON PER PERSON**

**\*Not Valid With Any Other Discount**

ROCK

## Mineral Study Group with K.C. Foster

K.C. Foster will help you identify rocks, minerals or gemstones that you have.

Please take a photo or two with:

- A ruler or coin for size.
- Information on where it was found and
- What you think it might be.

You can email K.C. at:

[katrinkaper@yahoo.com](mailto:katrinkaper@yahoo.com).

## Wildacres 2021 is ON!

Both sessions scheduled for summer/fall are a "go" this year! They have changed the food service from family style, and are doing extra cleaning of the accommodations, so that you can participate worry-free.

Located in northwestern North Carolina near Little Switzerland.

### AUGUST 23-29:

Metal Mania Cindy Moore  
Silver II-Filigree Jason Hamilton  
Wire Rowan Morgan  
Casting Bill Harr  
SW Silver Morning Sherrod  
Special Projects Jeff Sheer

### SEPTEMBER 13-19:

Complete information is available at Casting Bill Harr  
Gem Trees Jerri Heer  
Leather Tom Slavicek  
Gem ID Teresa Polly  
Electro Etching Micah Kirby  
Chain Maille Marilou Hillenbrand Silver III-Inlay II Chuck Bruce

Metal Mania Cindy Moore  
SFMSworkshops.org.

Questions? Please contact Lisa Roberts, Education Coordinator, at

[antleycreations@yahoo.com](mailto:antleycreations@yahoo.com) or  
423/494-7096.

To register for classes, contact Claudia Erwin, Registrar, at [registrarwildacres@gmail.com](mailto:registrarwildacres@gmail.com) or 865/973-1933.

A BIG THANK YOU goes out to **Electrical Consulting Services, Inc.** for donating their time and skill to our club to help our shop with some electrical issues!

Electrical Consulting  
Services, Inc  
1720 Upland Road West  
Palm Beach, FL 33409  
T:561-478-0100  
[ecsinc.biz](http://ecsinc.biz)





## MEMBERSHIP DUES

Junior Membership—\$10.00  
(Under age 18)

Single Membership—\$20.00  
(Over age 18)

Family Membership—\$30.00  
(Includes 2 adults and children under age 18 in a single household)

*Membership expires on December 31st each year and is due by the end of February of the new year.*

To renew your membership, make your check or money order to:

Gem & Mineral Society of the Palm Beaches, Inc. and mail to:

Membership Coordinator  
Gem & Mineral Society  
P.O. Box 18095  
West Palm Beach, FL 33416-8095

## NAME TAGS

Available from:  
Ace Marking Devices (\$12.00)  
3308 S. Dixie Hwy.  
West Palm Beach, FL 33405  
561/833-4073

## SHOP FEES

Up to 3 hours shop time - \$7  
Over 3 hours shop time - \$10

SEE CALENDAR FOR OPEN SHOPS

## SHOP STEWARDS

Head Shop Steward:

Lee Miller 561/329-8872  
Dennis Rietwyk 561/255-0292  
Samantha Lazzaro 561/372-2359  
Lo Rain Dudley 561-827-5793

Shop Phone:  
561/585-2080

# COVID-19 SAFETY INFORMATION

Per The South Florida Science Center pertaining to our monthly meeting place:

As of July 27th, 2021: Per recent CDC guidelines driven by scientific evidence, face coverings are no longer required for fully vaccinated guests, but are recommended. The CDC continues to strongly recommend the use of face coverings indoors, despite vaccination status.



The Gem & Mineral Society of the Palm Beaches, Inc. is a 501 (c) (3) corporation and a member of the Eastern and Southeastern Federations of Mineral and Lapidary Societies, and is affiliated with the American Federation of Mineralogical Societies. Monthly meetings are held on the third Thursday of the month except for December, which is held on the second Thursday. Meetings start at 7:30 PM at the former Garden Club building (across from the Science Center), 4800 Dreher Trail North, West Palm Beach, FL 33405.

*The opinions, beliefs and viewpoints expressed by the various authors in this newsletter do not necessarily reflect the opinions, beliefs and viewpoints of the Gem and Mineral Society of the Palm Beaches ("GMSPB"). GMSPB does not verify any claims made for accuracy, and is not responsible for the views expressed. Nothing contained herein constitutes any sort of professional advice, including but not limited to legal, medical, or financial advice. Any action you take based on information published in The Rockhound is strictly at your own risk.*



Mineral specimens in photos of the: *Chrysocolla*, *Vanadinite*, *Azurite Sun*, and *Stibnite* were shown at July's membership meeting discussion by **Clay Hecoeks. UnderGround Treasures , UGTreasures.com**



## Club Purpose

**To associate persons of the Palm Beach area of Florida who are interested in earth sciences, to work together as an organization in the gathering, cutting, displaying, and studying of rocks, shells, artifacts, and any kind of scientific objects of interest to the individual and the organization, to promote community interest in these objects.**

The Gem and Mineral Society of the Palm Beaches is part of a national hierarchy of mineralogical societies:

The American Federation of Mineral Societies— [amfed.org](http://amfed.org)—is an organization of Regional Federations, the Regional Federations are our parent clubs:

- Eastern Federation of Mineralogical and Lapidary Societies: [efmls.org](http://efmls.org)
- Southeast Federation of Mineralogical Societies: [amfed.org/sfms](http://amfed.org/sfms)

The Gem and Mineral Society of the Palm Beaches has several Neighbor Clubs:

- Florida Gold Coast Gem and Mineral Society (Broward County) :
- St. Lucie County Rock and Gem Club:
- Treasure Coast Rock and Gem Society (Indian River County) :
- Miami Mineralogical and Lapidary Guild: [mmlg-inc.org](http://mmlg-inc.org)

All of these Clubs have extensive websites with articles, information, and newsletters of interest to all

## AFMS CODE OF ETHICS

I will keep informed on all laws, regulations or rules governing collecting on public lands and will observe them.

I will, to the best of my ability, ascertain the boundary lines of property on which I plan to collect.

I will use no firearms or blasting material in collecting areas.

I will cause no willful damage to property of any kind— fences, signs, buildings.

I will leave all gates as found.

I will build fires in designated or safe places only and will be certain they are completely extinguished before leaving the area.

I will discard no burning material—matches, cigarettes, etc.

I will fill all excavation holes, which may be dangerous to livestock.

I will not contaminate wells, creeks or other water supply.

I will cause no willful damage to collecting material and will take home only what I can reasonably use.

I will practice conservation and undertake to utilize fully and well the materials I have collected and will recycle my surplus for the pleasure and benefit of others.

I will support the rockhound project H.E.L.P. (Help Eliminate Litter Please) and will leave all collecting areas devoid of litter, regardless of how found.

I will cooperate with field trip leaders and those in designated authority in all collecting areas.

I will report to my club or Federation officers, Bureau of Land Management, or other authorities, any deposit of petrified wood or other materials on public lands which should be protected for the enjoyment of future generations for public educational and scientific purposes.

I will appreciate and protect our heritage of natural resources.

I will observe the "Golden Rule," will use "Good Outdoor Manners" and will at all times conduct myself in a manner which will add to the stature and public image of rockhounds everywhere.

The Rockhound Copyright 2021

by the Gem & Mineral Society of the Palm Beaches, Inc.

Permission to reprint original material herein not otherwise copyrighted is granted provided that credit is given to both author and publication. Articles not bylines are by the Editor.

FAIR USE NOTICE. This publication may contain copyrighted material the use of which has not been specifically authorized by the copyright owner. We are making such material available in our efforts to advance the educational understanding of the amateur jewelry fabrication and rock collecting hobbies. We believe this constitutes a 'fair use' of any such copyrighted material as provided for in section 107 of the U.S. Copyright Law. If you wish to use material from this publication for commercial or purposes of your own that go beyond 'fair use', you must obtain permission from the copyright owner.