



# The Rockhound

Official Publication of the Gem & Mineral Society of the Palm Beaches, Inc.

[www.gemandmineralsociety.org](http://www.gemandmineralsociety.org)  
June Volume 54 Issue 5

## President's Message

I can't believe that 2021 is already half over and the restrictions from the pandemic are easing. I think the club is on its way back to being active and financially stable. The show is a go and most vendor booths are full. The Rock sale at the shop went well and the monthly auctions have been a success. Thank you to all of you who have participated and donated. I hope more of you will become interested and supportive in the future endeavors.

So thankful for all volunteers who have given their time and talents to push the club forward after the shut down. Special thanks to Gale Langford for planning all the wonderful field trips and the wine and pine we had on June 29th. My daughter Samantha pretty much orchestrated and organized the shop rock sale and has been doing all auction photos and posting. We couldn't do it without her.

We still need more members to get involved in activities and I ask for any suggestions you might have for what you might want to get out of the club. Coming to the meetings is an integral part of being a member and participating in the many activities we plan for you. We are trying to make meetings more fun and social, while being interesting and informative. I have many incentives for you to come, starting with Birthstone challenge and attendance raffle. The more meetings you come to the more chances you get to win a beautiful Amethyst specimen. We welcome the new members and hope you will get involved and active.

- Arlene Lazzaro, President

## Membership Meeting

Thursday, July 15th at **7:00 pm**

**Note New Time!**

4801 Dreher Trail North  
West Palm Beach, FL 33405

## Alan Meltzer: Dinosaur "Gem" Bone



This month's presentation will explore the rare and beautiful fossil material dinosaur "gem" bone. Found only in a couple places on Earth, the

vast majority of this Jurassic age fossil is found on the Colorado Plateau, near the Four Corners intersection of Arizona, Utah, Colorado and New Mexico. Not only does gem bone make stunning, colorful specimens but it is also a valuable, rare lapidary material.

## Birthstone Challenge:

Bring your best Ruby specimen.  
Prize: freshwater pearl strand and rhodochrosite slab.



## Show and Tell

Bring your recent projects or specimens for the Show and Tell table.

## Want to Sell at the Meeting?

Contact Arlene Lazzaro  
516/810-3495

## In This Issue

[June Birthstones: Alexandrite, Moonstone & Pearl](#)

[July Birthstone: Ruby](#)

[Sunshine News](#)

[Birthdays](#)

[Mineral Study Group](#)

[June Presentation: Clay Hecoeks](#)

["A Day To Treasure" Field Trip Report](#)

[Wine & Pine Party Report](#)

[Member Highlight: Amanda Gimlin](#)

[Wildacres](#)

[2021 Show Report](#)

[Broken Jewelry Challenge](#)

[AFMS Code of Ethics](#)

[Shop Talk](#)

[Available Classes](#)

[Volunteering at the Annual Show](#)

[Calendars](#)

## Online Auction

July 16-25

Donations of stones, slabs, tools, supplies, finished projects are needed. Bring to the Shop during regular shop hours—call the shop steward first.

<https://gmspb.betterworld.org/auctions/gem-mineral-society-palm-beaches>



## Club Organization

The Gem and Mineral Society of the Palm Beaches is part of a national hierarchy of mineralogical societies, as shown below.



The [American Federation of Mineral Societies](#)—[amfed.org](http://amfed.org)—is an organization of **Regional Federations** as shown above.

Two **Regional Federations** are our parent clubs:

- ◆ [Eastern Federation of Mineralogical and Lapidary Societies](#)—[amfed.org/efmls](http://amfed.org/efmls)
- ◆ [Southeast Federation of Mineralogical Societies](#)—[amfed.org/sfms](http://amfed.org/sfms)

The [Gem and Mineral Society of the Palm Beaches](#)—[gemandmineralsociety.org](http://gemandmineralsociety.org)—has several **Neighbor Clubs**:

- ◆ [Florida Gold Coast Gem and Mineral Society](#)—[fgcgms.com](http://fgcgms.com)—(Broward County)
- ◆ [St. Lucie County Rock and Gem Club](#)—[slockandgem.org](http://slockandgem.org)
- ◆ [Treasure Coast Rock and Gem Society](#)—[treasurecoastrockandgem.org](http://treasurecoastrockandgem.org) (Indian River County)
- ◆ [Miami Mineralogical and Lapidary Guild](#)—[mmlg-inc.org](http://mmlg-inc.org)

All of these Clubs have extensive websites with articles, information, and newsletters of interest to all



# June Birthstones: Alexandrite, Moonstone, and Pearl

**Alexandrite** was discovered in the first part of the 1800's in the Ural Mountains and was named after Czar Alexander II. Alexandrite is known as emerald



26.75 Carat Alexandrite

by day and ruby at night or green in sunlight and red in incandescent light. The range of color change varies from a

little to complete. Alexandrite is rare and expensive. Stones with high quality in the 4C's and high color change sell for \$2500-15,000/carats for sizes up to 1 carat. Above 1 carat prices increase to \$70,000/carats. The color change has more effect on the price than the clarity. Opaque alexandrite is used to make cabochons some of which can also be very expensive if they show good color change. Synthetic alexandrite is also available which sells for about \$100/carats. The 26.75 carat stone shown is courtesy of: en.wikipedia [CC BY-SA 3.0 (<http://creativecommons.org/licenses/by-sa/3.0/>)]

**Moonstone**, unlike alexandrite, has been known since ancient times. It was known to the Greeks, Romans and ancient Hindus. In Hindu mythology the moonstone was made from moonbeams. Today adularia moonstone is mined in Burma, India, Madagascar and Sri Lanka while albite moonstone is mined in Canada. Adularia refers to the feldspar that is primarily the potassium salt while albite is primarily the sodium salt. The adularia provides the better moonstones. Most moonstones tend to be small at about 1-5 carats. Moonstones at 15 carats and above are rare and very expensive. The moonstone which does not occur in Florida, became the official gemstone of



Moonstone courtesy of Didier Descouens  
<https://creativecommons.org/licenses/by-sa/4.0/>

Florida in honor of the moon landings.

Pearl is the third birthstone for June. Pearls have been known since before written history but it is believed they were discovered by people searching for food near the waters edge. Pearls were known in China as far back as 2300 BCE. Pearls were also worn by the Romans and Egyptians. Pearls were important to the Arabs because of the large number of oyster beds in the Persian Gulf. The Gulf was the center of the pearl trade until the advent of cultured pearls.

Today most pearls are cultured and natural pearls are rare and expensive.

Auction house sales of natural pearl necklaces and other jewelry are going in the millions of dollars now.



References:

<https://www.gemsociety.org/article/alexandrite-jewelry-and-gemstone-information/>  
<http://www.ereferencedesk.com/resources/state-gemstone/florida.html>  
<https://www.gia.edu/moonstone-history-lore>  
<https://www.jewelryshoppingguide.com/moonstone-buyers-guide/>  
<https://www.romadesignerjewelry.com/blogs/education/the-history-of-gemstones-what-is-moonstone>  
<https://www.pbs.org/wgbh/nova/article/history-pearls/>  
<http://www.thejewelleryeditor.com/jewellery/article/history-of-pearls-pearl-jewellery-rings-earrings-necklaces/>  
<http://www.thejewelleryeditor.com/jewellery/article/natural-pearl-necklaces-earrings-dominate-jewellery-auctions/>

-Article compiled by Richard Tracey

## July Birthstone: Ruby

High quality rubies tend to be more rare and expensive than diamonds of equivalent size. Ruby is corundum (aluminum oxide) with an impurity of chromium. Ruby is red corundum and any other color of corundum, even pink, is known as sapphire. Ruby has been known since ancient times but prior to 1800 other red stones were thought to be ruby including red spinel, tourmaline and garnet. Even some famous rubies from the past have been determined to not be genuine rubies. For much more information on rubies see previous newsletters from 2016 -2019. If you can't locate your copy they are on the club website under the Club Archives page.

For this July we looked at synthetic rubies, not the cheap stained glass or dyed quartz and that sort of thing, but at laboratory produced rubies that are created under the same conditions that form rubies deep in the earth. For a true Rockhound this probably sounds like blasphemy but for some of us, we would never be able to own a quality stone of any size. A quality 1.75 carat flawless synthetic ruby costs \$695 at Fire and Brilliance ([fireandbrilliance.com](http://fireandbrilliance.com)) while the equivalent natural counterpart would sell for \$4000 – \$10,000. These synthetic rubies are exactly the same mineral as natural and are priced reasonably. The drawback is that they are not natural.

There are four basic methods that are used to prepare synthetic crystals:

**Verneuil Method.** By 1902 French Chemist Auguste Verneuil had a commercial operation using the flame fusion method to prepare single crystals of various items including ruby. This method uses a hydrogen/oxygen flame to melt the raw materials at 2000 Centigrade (3630 deg F) and slowly withdrawing material which solidifies as a single crystal.

**Czochralski Process.** Jan Czochralski invented this method in 1915. It is similar to the Verneuil method in that material is slowly withdrawn from a molten reservoir of the pure crystal material yielding a pure single crystal. The main use today for this process is to produce large rods of single crystal silicon to be

sliced into wafers for the chip industry.

**Hydrothermal Process.** This method was commercialized in 1957 by Bell Labs. This process mimics nature which is where the name comes from. At high temperature 300 Centigrade and high pressure the powdered mineral dissolves in water. The oven also has a lower temperature section and as material flows into the cooler area it crystalizes.

**Flux Method.** In 1958 chemist Carroll Chatham came up with this method initially trying to make diamonds but first made other stones like rubies. The powdered mineral of interest is mixed with other salts that act as a flux. The mixture is heated to melt. And then slowly cooled from 1200 centigrade to room temperature over a long period of time.



The website below for Chatham has an interesting story about the formation of the company and makes an interesting read. Also below [fireandbrilliance.com](http://fireandbrilliance.com) is a jewelry site that has loose synthetic rubies and you can see prices for various cuts and sizes.

### References:

<https://www.americangemsociety.org/page/julybirthstone>

<https://www.chatham.com/>

[https://en.wikipedia.org/wiki/Verneuil\\_method](https://en.wikipedia.org/wiki/Verneuil_method)

[https://en.wikipedia.org/wiki/Czochralski\\_method](https://en.wikipedia.org/wiki/Czochralski_method)

[https://en.wikipedia.org/wiki/Hydrothermal\\_synthesis](https://en.wikipedia.org/wiki/Hydrothermal_synthesis)

[http://www.roditi.com/SingleCrystal/Quartz/Hydrothermal\\_Growth.html](http://www.roditi.com/SingleCrystal/Quartz/Hydrothermal_Growth.html)

[https://en.wikipedia.org/wiki/Flux\\_method](https://en.wikipedia.org/wiki/Flux_method)

<http://www.icmr.ucsb.edu/programs/documents/Sefat1.pdf>

<https://www.fireandbrilliance.com>

Photo by: Rob Lavinsky, [iRocks.com](http://iRocks.com) – CC-BY-SA-3.0 / CC BY-SA (<https://creativecommons.org/licenses/by-sa/3.0>)

-Article compiled by Richard Tracey



# Sunshine News

Many thanks to all the volunteers who helped with our Memorial Day Rock Sale!

## Mineral Study Group with K.C. Foster

***K.C. Foster will help you identify rocks, minerals or gemstones that you have. Please take a photo or two with a ruler or coin for size. Include basic information on where it was found and what you think it might be. You can email K.C. at: [katrinkaper@yahoo.com](mailto:katrinkaper@yahoo.com).***



## What Are They Doing at the Shop?

Interested in taking Lee's Cabbing Class, or curious what we do at the shop? Why not come to any **Open Shop** session and observe! Please check the **Shop Talk** page or the **Calendars**, and come visit us! Masks are not required if you are **fully vaccinated**.



### June

- Benjamin Johnson
- Giancarlo Leonard
- Tami Levy
- Debora Oster
- Kathy Pickens
- Marlene Posner
- Stephanie Rosicci
- William Sullivan
- Donna Sypniewski
- Benjamin Taylor

### July

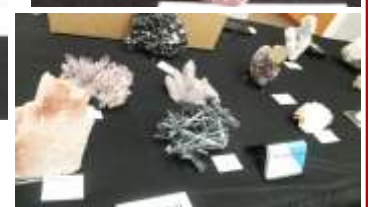
- John Beachli
- K.C. Foster
- Marta Cruz
- Debbie Griffith-Brown
- Amber Lawson
- Leslie Markowitz
- Michael Perkins
- Grant Simmons
- Laura Simmons



*The secret of staying young is to live honestly, eat slowly, and lie about your age.*  
-Lucille Ball

# Clay Hecocks: What to Look for in Mineral Specimens

June 17th at the Multi-Purpose Center (WPB Science Center)



# "A Day to Treasure" Field Trip Report

Saturday, June 19

McLarty Treasure Museum

Mel Fisher's Treasure Museum



# The Wine and Pine Party



Making bezels from pine needles? Sure, why not? Look what beauties our members created with cabochons, dyed or natural pine needles, leather cord, and a little wine! Last month, ten of our members assembled at Gale Langford's office to socialize and learn a new jewelry making technique. Sorry you missed the fun? Gale is willing to do another session if there is enough interest. Contact Gale at [galelangford@comcast.net](mailto:galelangford@comcast.net) if you're interested!







# Member Highlight: **Amanda Gimlin**

Amanda may be new to our club, but she's not new to gems and minerals. She's been a graduate GIA gemologist for ten years and has worked in the jewelry industry for twelve years. Originally from Arizona, Amanda grew up obsessed with rocks, collecting everything interesting she found. She and her mother were both avid rockhounds, and they had plenty of great sites nearby to explore.

As a young adult, she worked in restaurants and as a camp counselor, until she discovered the Gemological Institute of America (GIA). That sealed the deal and she knew exactly what she wanted to do with her life! Soon she was enrolled in GIA courses and working in the jewelry industry, and has never looked back. She absolutely loves her job as a gemologist!

Amanda has great ambitions with the GMSPB. She is taking Lee's lapidary course, learning to cut her own stones. She's done quite a bit of jewelry design in her job—some photos of her designs are displayed below. Those diamond and ruby earrings are really exquisite, aren't they?

She participated in the "Day to Treasure" field trip and loved it. And she was so enthralled with Clay Heco's presentation in June, with the beautiful specimens he brought, that she admits it literally brought tears to her eyes.

Eager to get involved with the GMSPB, Amanda is gearing up to take on a new gem-related challenge: the club newsletter! If all goes as anticipated, your August newsletter will be her first. Future suggestions and submissions should go to her—[agimlin7@gmail.com](mailto:agimlin7@gmail.com). Let's wish Amanda the best in her upcoming role in the club!



### Club Purpose

To associate persons of the Palm Beach area of Florida who are interested in earth sciences, to work together as an organization in the gathering, cutting, displaying, and studying of rocks, shells, artifacts, and any kind of scientific objects of interest to the individual and the organization, to promote community interest in these objects.

#### The Rockhound Copyright 2021

by the Gem & Mineral Society of the Palm Beaches, Inc.

Permission to reprint original material herein not otherwise copyrighted is granted provided that credit is given to both author and publication. Articles not bylines are by the Editor.

**FAIR USE NOTICE.** This publication may contain copyrighted material the use of which has not been specifically authorized by the copyright owner. We are making such material available in our efforts to advance the educational understanding of the amateur jewelry fabrication and rock collecting hobbies. We believe this constitutes a 'fair use' of any such copyrighted material as provided for in section 107 of the U.S. Copyright Law. If you wish to use material from this publication for commercial or purposes of your own that go beyond 'fair use', you must obtain permission from the copyright owner.

## Wildacres 2021 is ON!

Both sessions scheduled for summer/fall are a "go" this year! They have changed the food service from family style, and are doing extra cleaning of the accommodations, so that you can participate worry-free. Located in northwestern North Carolina near Little Switzerland.

### AUGUST 23-29:

Metal Mania	Cindy Moore
Silver II-Filigree	Jason Hamilton
Wire	Rowan Morgan
Casting	Bill Harr
SW Silver	Morning Sherrod
Special Projects	Jeff Sheer

### SEPTEMBER 13-19:

Complete information is available at

Casting	Bill Harr
Gem Trees	Jerri Heer
Leather	Tom Slavicek
Gem ID	Teresa Polly
Electro Etching	Micah Kirby
Chain Maille	Marilou Hillenbrand
Silver III-Inlay II	Chuck Bruce
Metal Mania	Cindy Moore

[SFMSworkshops.org](http://SFMSworkshops.org).

**Questions?** Please contact Lisa Roberts, Education Coordinator, at [antleycreations@yahoo.com](mailto:antleycreations@yahoo.com) or 423/494-7096.

**To register** for classes, contact Claudia Erwin, Registrar, at [registrarwildacres@gmail.com](mailto:registrarwildacres@gmail.com) or 865/973-1933.

## 2021 Show Report

by Barbara Ringhiser, Acting Show Chairman  
Thank you to Richard Tracey (Advertising), Kelly Azor-Anderson (Demo Area), Arlene Lazzaro (Social Media), Jenny Wright (speakers & info area), Dianna Ray (Volunteers), Angela Juliano (COVID protocol), Lo Rain (Scholarship raffle), Laura Phillips (Show Program), Amelia Homan (Social Media), and Clara Pflueger (Exhibits) who attended the first show meeting of the year on 5/24.

The next meeting is June 28th at 7:30pm via Zoom.

Forms for volunteers will be sent out in August.

Volunteers are especially needed to put the mine together and also someone to be in charge of the mine area and operation.

Cash prizes for 1st, 2nd and 3rd places for exhibit cases will be awarded this year. We'll have an exhibit of some of the club's best specimens.

This year we will again be selling fossil buckets in the mine area.

Remember, The show is November 20th and 21st!!!

**The Gem & Mineral Society of the Palm Beaches, Inc.**  
Is proud to present our  
**54th ANNUAL**  
**Gem, Mineral, Jewelry, Bead and Fossil Show**  
*Featuring exhibits, speakers & prize drawings!*  
**November 20—21, 2021**  
South Fl. Fairgrounds/ Expo Center East  
9067 Southern Blvd. / West Palm Beach, FL 33411

ADULTS \$9  
2-DAY PASS \$14  
CHILDREN  
UNDER 12 FREE

Saturday 9AM to 6PM  
Sunday 10AM to 5PM  
[www.gmspb.org](http://www.gmspb.org)

**GEM MINING**  
**SPIN-THE-WHEEL GAME**  
(suggested donation \$1/spin)  
**GEODE CRACKING**  
**FREE PARKING**  
**PRIZE DRAWINGS**  
**DEMONSTRATIONS**  
**SPEAKERS**  
**EXHIBITS**  
**FOSSIL DIG**  
**FACE & ROCK PAINTING**  
Proceeds from this event support  
GMSPB INC (a 501(c)(3) Corp.)

The Gem & Mineral Society of the Palm Beaches, Inc.  
Present this Coupon for  
**\$1.00 OFF\* ONE ADULT ADMISSION**  
(Feel Free to Copy this Coupon)  
**LIMIT ONE COUPON PER PERSON**  
\*Not Valid With Any Other Discount

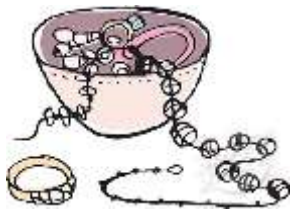
## Broken Jewelry Challenge

**WANTED: Your old broken, junk, and unwanted jewelry!**

*We will be holding a “broken jewelry challenge” in late summer and early fall—breathing new life into old jewelry by making new pieces from old, broken, and discarded jewelry. This is a great time to clean out your jewelry box!*

*Please drop off your broken or unwanted jewelry at the shop whenever it's open.*

*Sessions will be scheduled starting in August, so be on the lookout for the announcements. There will be a prize for the best piece. Shop fees will apply—\$7 for up to three hours and \$10 for longer.*



**Why science teachers should not be given playground duty.**

## AFMS Code of Ethics

I will respect both private and public property and will do no collecting on privately owned land without the owner's permission.

I will keep informed on all laws, regulations or rules governing collecting on public lands and will observe them.

I will, to the best of my ability, ascertain the boundary lines of property on which I plan to collect.

I will use no firearms or blasting material in collecting areas.

I will cause no willful damage to property of any kind—fences, signs, buildings.

I will leave all gates as found.

I will build fires in designated or safe places only and will be certain they are completely extinguished before leaving the area.

I will discard no burning material—matches, cigarettes, etc.

I will fill all excavation holes, which may be dangerous to livestock.

I will not contaminate wells, creeks or other water supply.

I will cause no willful damage to collecting material and will take home only what I can reasonably use.

I will practice conservation and undertake to utilize fully and well the materials I have collected and will recycle my surplus for the pleasure and benefit of others.

I will support the rockhound project H.E.L.P. (Help Eliminate Litter Please) and will leave all collecting areas devoid of litter, regardless of how found.

I will cooperate with field trip leaders and those in designated authority in all collecting areas.

I will report to my club or Federation officers, Bureau of Land Management, or other authorities, any deposit of petrified wood or other materials on public lands which should be protected for the enjoyment of future generations for public educational and scientific purposes.

I will appreciate and protect our heritage of natural resources.

I will observe the “Golden Rule,” will use “Good Outdoor Manners” and will at all times conduct myself in a manner which will add to the stature and public image of rockhounds everywhere.

# Shop Talk



The GMSPB Shop is open again! Shop hours are available only to GMSPB members. Shop fees are \$7 for up to three hours, and \$10 for longer. Note that this represents an increase over previous years.

**IMPORTANT!** Members must complete a 6-class Certification Class before using the cabbing equipment. This class runs for six consecutive weeks for 3 hours each week to provide safety instructions and cabbing techniques. If you received training elsewhere, you will still need to demonstrate your proficiency before using shop equipment. For information on cabbing certification please call Lo Rain Dudley or Lee Miller (numbers listed below).

**ALSO IMPORTANT!** You must contact the Shop Steward listed below before you come to the Shop. No walk-ins, please.

Masks are not required for fully vaccinated members. If you are not vaccinated, a mask and frequent use of hand sanitizer is required.

The Shop times listed below are approximate and may be negotiated with the Shop Steward on duty at the time.

Open shop is available for lapidary, metal work, enameling, fused glass, classes and to use the library. You must be certified to use the kiln! For kiln certification and classes, please contact Samantha Lazzaro. At the present time, kiln use is limited to Monday Open Shop Hours.

*You will be asked to sign a one-time liability waiver and be given a copy of the shop rules.*

*Always sign in and out of the log book and complete the information on the sign in sheet.*

## OPEN SHOP HOURS & STEWARDS

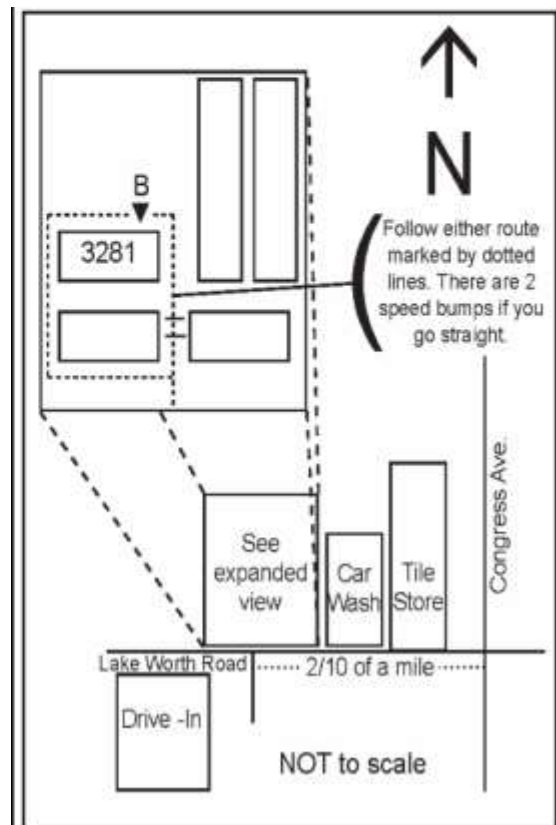
**Mondays 10:30am - 5:00pm**  
Samantha Lazzaro, Shop Steward  
631-764-6556

**Wednesdays 12:00pm - 3:00pm**  
Lo Rain Dudley, Shop Steward  
561-827-5793

**Thursdays 12:00pm - 3:00pm**  
Dennis Rietwyk & Lee Miller, Shop Stewards  
561-329-8872 (Lee)

**Fridays 12:00pm - 3:00pm**  
Lo Rain Dudley, Shop Steward  
561-827-5793

**Saturdays 10:00 am-2:00 pm**  
Lee Miller, Shop Steward  
561-329-8872



The street address of the shop is:  
3281 Lake Worth Road, Suite B,  
Lake Worth, FL 33461

# AVAILABLE CLASSES

CLASS	INSTRUCTOR	COST	DATE/TIME/NOTES
Introduction to Metalsmithing	Debbie Kashdan 561/738-6524	To be determined	Contact instructor to arrange.
Cabochon sessions Six 3-hr sessions	Lee Miller 561/329-8872	\$75 + \$20 materials fee	Contact instructor to arrange.
Cold Connections Class Series: ◇ Explosion Pendant ◇ Fold Forming Bracelet w/Beveled Stone Setting ◇ Scrapbook Bracelet (rivets) ◇ Metal Etching & Air Chasing Bracelet ◇ 3D Pendant w/Druzy Stone Slice NEW! ◇ Black Coral	Arlene Lazzaro 516/810-3495	\$40 + \$35 materials fee \$40 + \$35 materials fee \$40 + \$35 materials fee \$40 + \$40 materials fee \$40 + \$40 materials fee \$50 + \$35 materials fee	Contact instructor to arrange.
Enameling	Samantha Lazzaro 561/372-2359	\$40 + \$50 materials fee	Contact instructor to arrange.
Flat Lap	Lee Miller 561/329-8872	\$40 + \$10 supplies fee	Contact instructor to arrange.
Gem Tree	Dianna Ray 561/707-6753	TBD	Contact instructor to arrange.
Metalsmithing: ◇ Alien Prong Ring	Arlene Lazzaro 516/810-3495	\$40 + \$15 materials fee	Contact instructor to arrange.
Viking Knit	Lo Rain Dudley 561/827-5793	Contact instructor for info.	Contact instructor to arrange.
Kumihimo	Lo Rain Dudley 561/827-5793	Contact instructor for info.	Contact instructor to arrange.

## **VOLUNTEER TIME FOR THE ANNUAL SHOW!!!**

November 20th and 21st, the weekend of our annual show, will be here before we know it!! Our 54th!!! That means it is time to start thinking about volunteering NOW. Here's a list of volunteer positions and the duties required. YOU can make a difference! Without you, our society members, it would be impossible to fill the many time periods necessary to make the 2021 show the best show yet! Over 100 volunteer shifts need to be filled. **The club cannot run without the proceeds from the show!!**

## **PLEASE LET US COUNT ON YOU.**

### **THURSDAY Set-up crew - NOVEMBER 18th**

Approximately 6 people are needed to move tables around and set up each booth area. We will be supervising Fair- grounds help in the placement of tables according to our floor plan. Also, we will be able to do the Society's setup on Thursday. We have hired help to do the heavy lifting, but we still need members to assist in directing helpers on where unloaded materials go at the fair-grounds. Materials such as our display cases, from the storage unit, must be loaded in the rented truck, and brought to the Fair-grounds, unloaded and set-up. We will also be setting up the flume.

### **FRIDAY SET/UP/SUNDAY TAKE DOWN - NOVEMBER 19th and 21st**

As many volunteers as we can get are needed to set-up during the day on Friday and to take-down after the show from 5:00 PM on Sunday. Friday, the display cases need to be assembled, as well as many odds and ends jobs too numerous to go into here. On Sunday, after the show is over, everything must be packed up, loaded in the truck, and delivered back to the storage area. Again, we have hired help to do the heavy lifting, but we still need members to assist in directing helpers on where materials go to be loaded into the truck. We also will need some people to go to the storage location to direct the hired help on where to put the unloaded materials

### **TICKET TAKERS, NOVEMBER 20th and 21st**

Two people are needed for each 2-hour time slot. Responsibilities include taking tickets at the entrance doors, tearing the ticket in half, depositing one half in the box, and giving the second half to the guest. This position requires either sit- ting on a stool or stand- ing. Requirements include a pleasant, friendly, helpful, courteous, and kind personality. At times, ticket takers are very busy. This is a very important position because ticket takers are the "first impression" that people get of our society.

### **INFORMATION TABLE - NOVEMBER 20th and 21st**

Three people are necessary for each 2-hour time slot. Responsibilities include answering questions concerning the show, checking in volunteers and giving them their badges and providing information about our society's activities. Information attendants should be able to direct visitors and provide information about everything from who is in charge, to where a particular dealer is located. This position requires sitting at the information desk. The ability to be pleasant and helpful, without getting flustered, is important.

### **SCHOLARSHIP FUND PRIZE DRAWING - NOVEMBER 20th and 21st**

Two people per 2-hour time slot are needed. Responsibilities include encouraging people to purchase tickets for the prize drawing of the many items available. It is extremely important to be friendly, inviting, cheerful, and encouraging without being insistent. This position requires some standing. The main objective is to point out the items that may be won with only a \$1.00 ticket

### **SHOW SECURITY - NOVEMBER 20th and 21st**

Two to four people are needed for each 2-hour time slot. Responsibilities are to observe people, watch for those act- ing in a dis- orderly manner (for example, drunk, smoking, or shoplifting), and report it to Show Chairman, Committee

Chairperson, Fairgrounds Security, or Armed Security. Show Security guards should NEVER confront or accuse anyone. They ONLY report the incident. Greeting the public in a friendly manner is also important. This position requires walking around or standing. **PLEASE DO NOT SHOP OR SIT DOWN AND EAT DURING YOUR SHIFT.**

## DEMONSTRATIONS- NOVEMBER 20th and 21st

People are needed to demonstrate their skills during each 2-hour time slot. The area is large enough for several demonstrators to present simultaneously. This is the opportunity to greet the public and show-off by participating in beading, stained glass, wire wrapping, chain making, or any other lapidary skills. If you are interested in volunteering to demonstrate at the show, please contact demonstration coordinator Kelly Azor-Anderson at 561-635-7619

## LUNCH ON SET-UP DAY - NOVEMBER 19th

Lunch will be served to the dealers, society members, and fairgrounds workers on Friday, set-up day. We need someone who will shop for the supplies (we have a list - sandwich makings, drinks, salad, plates, utensils, donuts, coffee, etc.) Everyone makes their own sandwiches. You would be advanced funds for shopping. Serving is buffet style. We need a couple of volunteers there to oversee the buffet between 9am and 5pm - 2 hour shifts.

## MINING / GEODE CRACKING/SPINNING WHEEL GAME/NEW—KIDDIE KORNER NOVEMBER 20th and 21st

We need the following people *for each 2-hour time slot* to run the mining area effectively. Duties include:

- 2 people working together to collect money and use an iPad for credit card payments, enter inventory on an iPad and give out tickets
- 1 person to crack geodes
- 1 person for working the Spin-the-Wheel game and for keeping the table stocked with prizes. The game involves a table marked with squares that correspond to numbers on the wheel. The player wins the prize in the square matching the number on the wheel.
- 1 person to identify gemstones at the flume area. Volunteers will be briefed on what gemstones are available in the mine. There will be cards available with gemstone samples to aid in identification if participants request the information.
- 1 person to help visitors select geodes.
- 1 person to fill bucket bags and fill buckets as needed.
- 1 person to keep the flume running smoothly, moving used gravel, handing out screens, etc.
- 3 people to man the 3 stations for children of all ages. There will be a face painter in this area. Activities include a cornhole game, activities about dinosaurs, and a raffle. Requirements for volunteers include being child-oriented, interactive, very patient, and able to be physically active (not sitting)

***This is a very active area and these volunteer positions, with few exceptions, are not sedentary positions.***

Please remember, if you commit to an assigned position, please perform those duties ***unless asked to temporarily work in an extra busy area.***

If you really want your choice of positions, remember to contact us early, it is first come first serve. The form can be turned in to any of the persons listed below, in whichever manner is easiest for you. Turn the form in at any upcoming Membership meeting, Email, phone or mail:

Dianna Ray  
561-707-6753  
countrycutie29@aol.com

Barbara Ringhiser  
561-379-4307  
bar5678@aol.com

By mail:

GMSPB Volunteers  
PO Box 18095  
West Palm Beach, FL 33416-  
8095

**The Rockhound**

Official publication of the Gem & Mineral Society of the Palm Beaches, Inc.

Name \_\_\_\_\_ Phone \_\_\_\_\_

Best Time to Call \_\_\_\_\_ Email \_\_\_\_\_

Positions Interested In \_\_\_\_\_

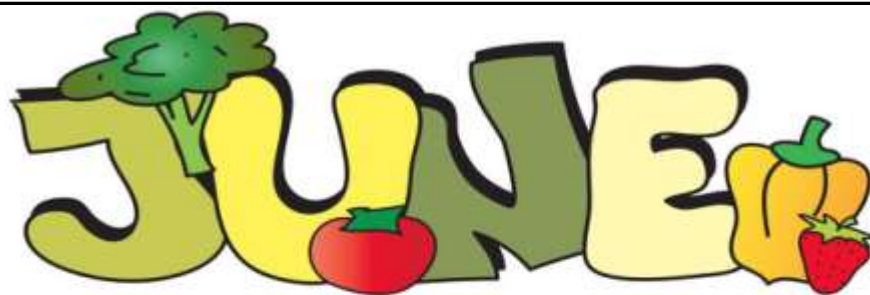
Please circle the shifts for which you are available:


Thursday, Nov. 18 (set-up)	9-11am	11am-1pm	1-3pm	3-5pm
Friday, Nov. 19 (set-up, lunch)	9-11am	11am-1pm	1-3pm	3-5pm
Saturday, Nov. 20	9-11am	11am-1pm	1-3pm	3-6pm (3 hours)
Sunday, Nov. 21	10 - Noon	Noon - 2pm	2 - 5pm (3 hours)	5 - ?pm (take down)

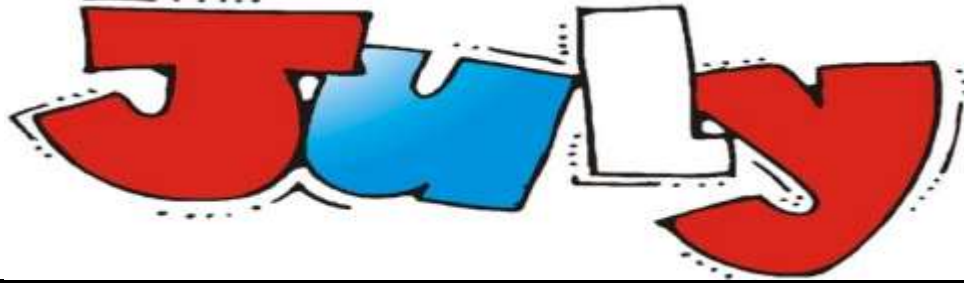



**The Rockhound**

Official publication of the Gem & Mineral Society of the Palm Beaches, Inc.



Sun	Mon	Tue	Wed	Thu	Fri	Sat
		<b>1</b>	<b>2</b> BOARD MEETING 7:00 PM  12-3 PM Lo Rain 561/827-5793	<b>3</b>  12-3 PM Lee 561/329-8872	<b>4</b>  Open Shop 12-3 PM (5-8 PM**) Lo Rain 561/827-5793	<b>5</b>  10-2 Lee 561/329-8872
<b>6</b>	<b>7</b>  Open Shop 10:30AM - 5 PM General Work Samantha 631/764-6556	<b>8</b>	<b>9</b>  Open Shop 12-3 PM General Work Lo Rain 561/827-5793	<b>10</b>  Open Shop 12-3 PM General Work Lee 561/329-8872	<b>11</b>  Open Shop 12-3 PM (5-8 PM**) Lo Rain 561/827-5793	<b>12</b>  Open Shop 10-2 General Work Lee 561/329-8872
<b>13</b>	<b>14</b>  Open Shop 10:30AM - 5 PM General Work Samantha 631/764-6556	<b>15</b>	<b>16</b>  Open Shop 12-3 PM General Work Lo Rain 561/827-5793	<b>17</b> MEMBERSHIP MEETING 7:30 PM  12-3 PM Lee 561/329-8872	<b>18</b> AUCTION BEGINS  12-3 PM (5-8 PM**) Lo Rain 561/827-5793	<b>19</b> TREASURE MUSEUMS FIELD TRIP  10-2 Lee 561/329-8872
<b>20</b> 	<b>21</b>  Open Shop 10:30AM - 5 PM General Work Samantha 631/764-6556	<b>22</b>	<b>23</b>  Open Shop 12-3 PM General Work Lo Rain 561/827-5793	<b>24</b>  Open Shop 12-3 PM General Work Lee 561/329-8872	<b>25</b>  Open Shop 12-3 PM (5-8 PM**) Lo Rain 561/827-5793	<b>26</b>  Open Shop 10-2 General Work Lee 561/329-8872
<b>27</b> AUCTION ENDS	<b>28</b> SHOW COMM MEETING 7:00 PM  10:30AM - 5 PM Samantha 631/764-6556	<b>29</b>	<b>30</b>  Open Shop 12-3 PM General Work Lo Rain 561/827-5793			



Sun	Mon	Tue	Wed	Thu	Fri	Sat
				<b>1</b>  Open Shop 12-3 PM General Work Lee 561/329-8872	<b>2</b>  Open Shop 12-3 PM (5-8 PM**) Lo Rain 561/827-5793	<b>3</b>  Open Shop 10-2 General Work Lee 561/329-8872
<b>4</b>  	<b>5</b>  Open Shop 10:30AM - 5 PM General Work Samantha 631/764-6556	<b>6</b>	<b>7</b>  <b>BOARD MEETING 7:00 PM</b>  Open Shop General Work Lo Rain 561/827-5793	<b>8</b>  Open Shop 12-3 PM General Work Lee 561/329-8872	<b>9</b>  Open Shop 12-3 PM (5-8 PM**) Lo Rain 561/827-5793	<b>10</b>  Open Shop 10-2 General Work Lee 561/329-8872
<b>11</b>	<b>12</b>  Open Shop 10:30AM - 5 PM General Work Samantha 631/764-6556	<b>13</b>	<b>14</b>  Open Shop 12-3 PM General Work Lo Rain 561/827-5793	<b>15</b>  <b>MEMBERSHIP MEETING 7:00 PM</b>  12-3 PM Lee 561/329-8872	<b>16</b>  <b>AUCTION BEGINS</b>  12-3 PM (5-8 PM**) Lo Rain 561/827-5793	<b>17</b>  Open Shop 10-2 General Work Lee 561/329-8872
<b>18</b>	<b>19</b>	<b>20</b>	<b>21</b>  Open Shop 12-3 PM General Work Lo Rain 561/827-5793	<b>22</b>  Open Shop 12-3 PM General Work Lee 561/329-8872	<b>23</b>  Open Shop 12-3 PM (5-8 PM**) Lo Rain 561/827-5793	<b>24</b>  Open Shop 10-2 General Work Lee 561/329-8872
<b>25</b>  <b>AUCTION ENDS</b>	<b>26</b>	<b>27</b>	<b>28</b>  <b>SHOW COMM MEETING 7:30 PM</b>  Open Shop 12-3 PM Lo Rain 561/827-5793	<b>29</b>  Open Shop 12-3 PM General Work Lee 561/329-8872	<b>30</b>  Open Shop 12-3 PM (5-8 PM**) Lo Rain 561/827-5793	<b>31</b>  Open Shop 10-2 General Work Lee 561/329-8872

# AUGUST



Sun	Mon	Tue	Wed	Thu	Fri	Sat
<b>1</b>	<b>2</b>  Open Shop 10:30AM - 5 PM General Work Samantha 631/764-6556	<b>3</b>	<b>4</b>  <b>BOARD MEETING 7:00 PM</b>  12-3 PM Lo Rain 561/827-5793	<b>5</b>  12-3 PM Lee 561/329-8872	<b>6</b>  Open Shop 12-3 PM (5-8 PM**) Lo Rain 561/827-5793	<b>7</b>  Open Shop 10-2 General Work Lee 561/329-8872
<b>8</b>	<b>9</b>  Open Shop 10:30AM - 5 PM General Work Samantha 631/764-6556	<b>10</b>	<b>11</b>  Open Shop 12-3 PM General Work Lo Rain 561/827-5793	<b>12</b>  Open Shop 12-3 PM General Work Lee 561/329-8872	<b>13</b>  Open Shop 12-3 PM (5-8 PM**) Lo Rain 561/827-5793	<b>14</b>  Open Shop 10-2 General Work Lee 561/329-8872
<b>15</b>	<b>16</b>  Open Shop 10:30AM - 5 PM General Work Samantha 631/764-6556	<b>17</b>	<b>18</b>  Open Shop 12-3 PM General Work Lo Rain 561/827-5793	<b>19</b>  <b>MEMBERSHIP MEETING 7:00 PM</b>  12-3 PM Lee 561/329-8872	<b>20</b>  <b>AUCTION BEGINS</b>  12-3 PM (5-8 PM**) Lo Rain 561/827-5793	<b>21</b>  Open Shop 10-2 General Work Lee 561/329-8872
<b>22</b>	<b>23</b>  Open Shop 10:30AM - 5 PM General Work Samantha 631/764-6556	<b>24</b>	<b>25</b>  Open Shop 12-3 PM General Work Lo Rain 561/827-5793	<b>26</b>  Open Shop 12-3 PM General Work Lee 561/329-8872	<b>27</b>  Open Shop 12-3 PM (5-8 PM**) Lo Rain 561/827-5793	<b>28</b>  Open Shop 10-2 General Work Lee 561/329-8872
<b>29</b>  <b>AUCTION ENDS</b>	<b>30</b>  <b>SHOW COMM MEETING 7:30 PM</b>  10:30AM - 5 PM Samantha 631/764-6556	<b>31</b>				

## The Rockhound

Official publication of the Gem & Mineral Society of the Palm Beaches, Inc.

### MEMBERSHIP DUES

Junior Membership—\$10.00  
(Under age 18)  
Single Membership—\$20.00  
(Over age 18)  
Family Membership—\$30.00  
(Includes 2 adults and children under age  
18 in a single household)

*Membership expires on December 31st  
each year and is due by the end of  
February of the new year.*

To renew your membership, make your  
check or money order to:

Gem & Mineral Society of the Palm  
Beaches, Inc. and mail to:

Membership Coordinator  
Gem & Mineral Society  
P.O. Box 18095  
West Palm Beach, FL 33416-8095

### NAME TAGS

Available from:  
Ace Marking Devices (\$12.00)  
3308 S. Dixie Hwy.  
West Palm Beach, FL 33405  
561/833-4073

### SHOP FEES

Up to 3 hours shop time - \$7  
Over 3 hours shop time - \$10

SEE CALENDAR FOR OPEN SHOPS

### SHOP STEWARDS

Head Shop Steward:  
Lee Miller 561/329-8872  
Dennis Rietwyk 561/255-0292  
Samantha Lazzaro 561/372-2359  
Lo Rain Dudley 561-827-5793

Shop Phone:  
561/585-2080

### 2021 OFFICERS

President*	Arlene Lazzaro	516/810-3495
1st Vice President*	Barbara Ringhiser	561/379-4307
2nd Vice President*	Dianna Ray	561/707-6753
Secretary*	Clara Pflueger	201/566-6492
Treasurer*	Jenny Wright	561/634-1427

### 2021 DIRECTORS

Head Shop Steward*	Lee Miller	561/329-8872
Membership*	David Taylor	561/644-1888
Newsletter Editor*	Laura Phillips	561/523-3594
Member-at-Large*	Lo Rain Dudley	561/827-5793
Show Chairman*	Barbara Ringhiser (Acting)	561/379-4307
Webmaster*	Richard Tracey	561/318-6891

### COMMITTEE CHAIRPEOPLE

Hostess	Samantha Lazzaro	561/372-2359
Jr. Rockhound Program	Open	
Librarian	Shop Steward on Duty	
Programs	Dianna Ray	561/707-6753
Raffle Coordinator	Laura Simmons	407/234-0444
Refreshments	Arlene Lazzaro	516/810-3495
Sunshine Committee	Jenny Wright	561/634-1427
Social Events	Open	
Webmaster	Richard Tracey	561/318-6891

\*Denotes a Voting Member of the Executive Committee.

### WEBSITE

**[www.gemandmineralsociety.org](http://www.gemandmineralsociety.org) or [www.gmspb.org](http://www.gmspb.org)**

### Club Email Addresses

membership@gmspb.org  
newsletter@gmspb.org  
president@gmspb.org  
show@gmspb.org  
vendorinfo@gmspb.org  
webmaster@gmspb.org

Link to our **smile.amazon.com** account:

**<http://smile.amazon.com/ch/59-6196330>**

The Gem & Mineral Society of the Palm Beaches, Inc. is a 501 (c) (3) corporation and a member of the Eastern and Southeastern Federations of Mineral and Lapidary Societies, and is affiliated with the American Federation of Mineralogical Societies. Monthly meetings are held on the third Thursday of the month except for December, which is held on the second Thursday. Meetings start at 7:30 PM at the former Garden Club building (across from the Science Center), 4800 Dreher Trail North, West Palm Beach, FL 33405.

*The opinions, beliefs and viewpoints expressed by the various authors in this newsletter do not necessarily reflect the opinions, beliefs and viewpoints of the Gem and Mineral Society of the Palm Beaches ("GMSPB"). GMSPB does not verify any claims made for accuracy, and is not responsible for the views expressed. Nothing contained herein constitutes any sort of professional advice, including but not limited to legal, medical, or financial advice. Any action you take based on information published in The Rockhound is strictly at your own risk.*

Send comments or submissions to [laurajeanphillips@gmail.com](mailto:laurajeanphillips@gmail.com)