



# The Rockhound

Official Publication of the Gem & Mineral Society of the Palm Beaches, Inc.

[www.gemandmineralsociety.org](http://www.gemandmineralsociety.org)  
October 2019 Volume 52 Issue 12

## President's Message

Greetings, Rockhounds!

So, has anyone else been feeling that hint of might-be-fall in the early morning air? I mean, it was actually less than eighty degrees when I was driving in to work the other day! Regardless of the temperature, the calendar says Fall is here, and we will be welcoming back our seasonal residents soon. Before we know it, it will be time for our show...next will be officer elections...then our holiday banquet...and a new year!

So, here are some things to add to your calendar:

- ◇ **November 21-22: Show setup** - if you are able to help out, let Dianna Ray or Walt Triche know!
- ◇ **November 23-24: The Show!** Tell your friends, family, and anyone else you think might be interested. If you have a community bulletin board or workplace where you can put out fliers or coupons, let Barbara Ringhiser or myself know. If you know someone who might like to be a vendor, get them in touch with Barbara or Walt. Start planning your exhibit, and let Clara Pflueger know. And again, Dianna Ray is coordinating volunteers!
- ◇ **December 3: The December General Meeting**, including officer elections. The December meeting, as always, has been moved earlier in the month to accommodate our election process and to minimize conflicts with the Holidays for our members. Therefore, the December meeting will be held on Tuesday, December 3rd, at the Multi Purpose Center, at 7:30 PM.
- ◇ **December 7: The Holiday Banquet**, and installation of officers. We are still working out the details of the Banquet, but we have already secured our venue! We will be hosting the Banquet this year at our usual meeting location, the Science Center's multi-purpose center.

Also, I wanted to let everyone know to look out for a couple other newsletters in your e-mailboxes! The Gem and Mineral Society of the Palm Beaches (that's us) is a member of both the Eastern Federation of Mineralogical and Lapidary Societies (EFMLS), and the Southeast Federation of Mineralogical Societies (SFMS). The SFMS and EFMLS are regional federations, who are both in turn members of the national federation, the American Federation of Mineralogical Societies (AFMS). Each of the bodies also puts out their own newsletter, full of information from around the country! We will be forwarding these newsletters out to our membership, for your reading pleasure.

See You Soon!

— Laura Simmons, President

## Membership Meeting

Thursday, October 17  
7:30 PM

4800 Dreher Trail North  
West Palm Beach FL 33405  
at the Multi-Purpose Center

**Jorge Morales: GeoHazards, Florida  
Geology and the Florida Geologic  
Survey**

Jorge Morales has more than 25 years experience in regulating and consulting in environmental projects for both public and private sector clients. He is currently working in FDEP's Aquifer Protection Program – UIC. This presentation was originally prepared for Florida State University by FGS.



Potluck **PLEASE BRING A  
TASTY DISH TO  
SHARE!**

## *In This Issue*

[October Birthstones: Opal & Tourmaline](#)

[Member Highlight: Dennis Rietwyk](#)

[Machine Dig at Hogg Mine](#)

[Birthdays, Sunshine, & Holiday Banquet](#)

[What is Petrified Wood?](#)

[A Surprise at the Diamond Mine](#)

[Metaphysical Properties of Gemstones](#)

[Online Resources for Jewelry Makers](#)

[You Might Be a Rockhound if...](#)

[Upcoming Events](#)

[AFMS Code of Ethics](#)

[Annual Shows: Palm Beach & St Lucie](#)

[Volunteer at the Annual Show](#)

[October & November Calendars](#)

[Shop Talk](#)

[Available Classes](#)

[GMSPB Officers](#)

# October Birthstones: Opal and Tourmaline

## Opal

The name “opal” originates from the Greek word *opallios*, which meant “to see a change in color.” The Roman scholar Pliny used the word *opalus* when he wrote about this gemstone’s kaleidoscopic “play” of rainbow colors that could simulate shades of any stone.

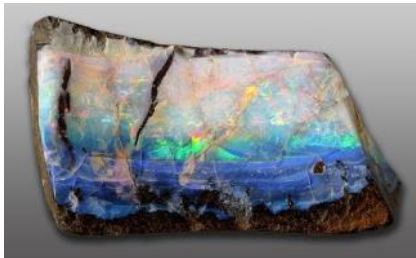


Figure 1: Hannes Grobe [CC BY-SA 2.5 (<https://creativecommons.org/licenses/by-sa/2.5>)]

Opal’s characteristic “play-of-color” was explained in the 1960s, when scientists discovered that it’s composed of microscopic silica spheres that diffract light to display various colors of the

rainbow. These flashy gemstones are called “precious opals;” those without play-of-color are “common opals.”

Dozens of opal varieties exist, but only a few (like Fire Opal and Boulder Opal) are universally recognized. Opals are often referred to by their background “body color”—black or white.

Opal’s classic country of origin is Australia. Seasonal rains soaked the parched Outback, carrying silica deposits underground into cracks between layers of rock. When the water evaporated, these deposits formed opal. Sometimes, silica seeped into spaces around wood, seashells and skeletons, resulting in opalized fossils.

Since opal was discovered in Australia around 1850, the country has produced 95 percent of the world’s supply. Opal is also mined in Mexico, Brazil, Honduras, Ethiopia, the Czech Republic and parts of the U.S., including Nevada and Idaho.

The water content of opal gems can range from three to 21 percent—usually between 6 and 10 in gem-quality



Figure 2: Dpultizer [CC BY-SA 3.0 (<https://creativecommons.org/licenses/by-sa/3.0>)]

material. This, combined with hardness of only 5.5 to 6 on the Mohs scale, makes opal a delicate gemstone that can crack or “craze” under extreme temperature, dehydration, or direct light.

Wearing opal jewelry is well worth the extra care, though. For centuries, people have associated this precious gemstone with good luck. Though some modern superstitions claim that opals can be bad luck to anyone not born in October, this birthstone remains a popular choice.



Figure 3: Dpultizer [CC BY-SA 3.0 (<https://creativecommons.org/licenses/by-sa/3.0>)]

## Tourmaline



Figure 4: Rob Lavinsky, iRocks.com – CC-BY-SA-3.0 [CC BY-SA 3.0 (<https://creativecommons.org/licenses/by-sa/3.0>)]

The name “tourmaline” comes from the Sinhalese words *tura mali*, which mean “stone of mixed colors.” As its name implies, tourmaline stands apart from other gemstones with its broad spectrum of colors in every shade of the rainbow.

Tourmaline is not one mineral, but a fairly complex group of minerals with different chemical compositions and physical properties. Certain trace elements produce distinct colors, and many resulting varieties have their own names:

Black tourmaline, known as “schorl” is rich in iron, which causes dark shades from deep brown to bluish-black. This variety makes up 95 percent of all tourmaline, though most of it isn’t gemstone-quality.

Dravite or brown tourmaline is rich in magnesium, which causes colors ranging from brown to yellow. It’s named for the Drave District of Carinthia (now Slovenia) where

## October Birthstones: Opal and Tourmaline (continued)

this stone is found.

Elbaite offers the widest range of gem-quality tourmaline colors, due to lithium traces combined with other coloring elements.

Rubellite or red tourmaline is caused by manganese, but if the color becomes less vibrant under different light sources, it may be called pink tourmaline.

Indicolite or blue tourmaline can appear purplish blue or bluish green, depending on the amount of iron and titanium.

Verdelite or green tourmaline can resemble emerald, but if its color is caused by chrome and vanadium, it's called a chrome tourmaline.



Figure 5: Rob Lavinsky, iRocks.com – CC-BY-SA-3.0 [CC BY-SA 3.0 (<https://creativecommons.org/licenses/by-sa/3.0/>)]

Paraíba tourmaline is a vividly colored purplish or greenish blue variety found in Paraíba, Brazil. It's the most recently discovered, and because of its desirably intense colors, it's one of the most valuable. The element copper is what is responsible for its vivid colors. Copper-bearing tourmaline is also found in other parts of the world such as Mozambique and Nigeria, but only copper-bearing tourmaline from Paraíba, Brazil is called "Paraíba tourmaline."

Achroite or colorless tourmaline is rare.

Parti-colored tourmaline displays more than one color, due to chemical fluctuations during crystallization. A common color combination is green and pink. These are often cut in slices to reveal a red center surrounded by a green rim, earning the name "watermelon tourmaline."



Figure 6: Rob Lavinsky, iRocks.com – CC-BY-SA-3.0 [CC BY-SA 3.0 (<https://creativecommons.org/licenses/by-sa/3.0/>)]

Tourmaline is mined in Brazil, Sri Lanka, Nigeria, Mozambique, Madagascar, Afghanistan, Pakistan and the U.S.—primarily Maine and California.

Tourmaline is desirable because of its sheer range of color options. Combined with a good hardness of 7 to 7.5 on the Mohs scale, tourmaline makes very wearable birthstone jewelry.

One of this gemstone's most impressive traits is its ability to become electrically charged through heat (pyroelectricity) and through pressure (piezoelectricity). When charged, tourmaline can act as a magnet by oscillating, and by attracting or repelling particles of dust.

Ancient magicians used black tourmaline as a talisman to protect against negative energy and evil forces. Today, many still believe that it can shield against radiation, pollutants, toxins, and negative thoughts.

— Information from [americangemsociety.org](http://americangemsociety.org)  
Compiled by Richard Tracey and Laura Phillips

### Club Purpose

To associate persons of the Palm Beach area of Florida who are interested in earth sciences, to work together as an organization in the gathering, cutting, displaying, and studying of rocks, shells, artifacts, and any kind of scientific objects of interest to the individual and the organization, to promote community interest in these objects.

#### The Rockhound Copyright 2019

by the Gem & Mineral Society of the Palm Beaches, Inc.

Permission to reprint original material herein not otherwise copyrighted is granted provided that credit is given to both author and publication. Articles not bylines are by the Editor.

**FAIR USE NOTICE.** This publication may contain copyrighted material the use of which has not been specifically authorized by the copyright owner. We are making such material available in our efforts to advance the educational understanding of the amateur jewelry fabrication and rock collecting hobbies. We believe this constitutes a 'fair use' of any such copyrighted material as provided for in section 107 of the U.S. Copyright Law. If you wish to use material from this publication for commercial or purposes of your own that go beyond 'fair use', you must obtain permission from the copyright owner.



If you've come to open shop hours on Thursday afternoons, you already know our shop steward, Dennis Rietwyk. Dennis was ushered into the club about five years ago by our late member Edwin Flashenburg. Ed was an electrical engineer, Dennis an electrician, and they hit it off right away. When Dennis did some electrical work for Ed, he asked to be compensated by having Ed teach him about rocks, minerals, and cabbing rather than with money. And so, for the rest of Ed's life, he taught Dennis what he could. Sadly, Ed's lifetime was cut short by illness. The last time Dennis saw him, he asked Dennis to finish some of his projects and to help out at the shop. Dennis's Thursday afternoons at the shop are his way of honoring his pledge to Ed.

According to Dennis, Ed was "living the dream right up to the last second." He had projects in the works up until the last day. Dennis believes that learning new things as we get older helps to "keep our minds young," especially when it involves learning physical skills "that help to keep the nervous system functioning properly."

Dennis's other club-related interest is in wire work. Some years ago, he met a man in Canada who made a living writing with wire. Dennis taught himself how to write names in wire, and together with his daughter, the two set up booths at fairs and fund-raisers. His daughter Crissy collected the names, and on the spot, Dennis wrote their names in wire, making bracelets out of single lengths of wire. "I was not getting rich," he said, "but I did cover expenses. The joy I would see in the faces of the kids that I could give them something, with the way they spell their names, made it worth while."

Dennis says that he finds joy in being needed at the shop. This year, he's looking forward to assembling the flume at our annual show. He says that he likes to remind himself daily of a quote by *Rabindranath Tagore*:

***I slept and dreamt that life was joy.  
I awoke and saw that life was service.  
I acted and behold, service was joy.***

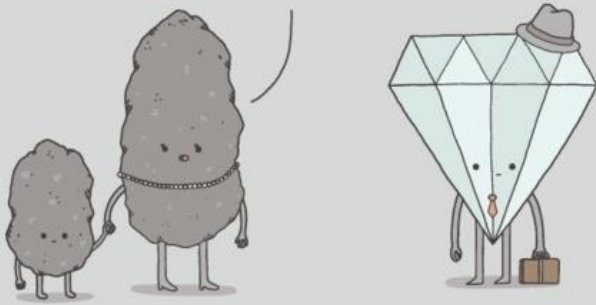
Thank you, Dennis, for your service to the club.

# Machine Dig at Hogg Mine

Shir-Lee Rosenberg organized another field trip to Hogg Mine in September, this time for a "machine dig" that only happens once a year. Unfortunately, the date was only announced a few days in advance, and only Shir-Lee was able to go. It was well worth it, though, because she found some great rose quartz, black tourmaline, and mica. One piece of rose quartz went from in the ground to into a pendant in just two hours! She actually sat under a tree and wire wrapped the stone, "right there at Hogg Mine".



YOUR DAD'S BEEN  
UNDER A LOT OF  
PRESSURE LATELY.



From [jokejive.com](http://jokejive.com)



**Kelly Azor \* Richard Brayman**  
**Linda Hersh \* Daniel Jacobson**  
**Ellen Jean \* Deborah Kachman**  
**Kathleen Krailler**  
**Arlene Lazzaro \* Alberto Martin**  
**Paul Sampson**  
**Cassandra Stryker**  
**Risa Truglio**

*The secret of staying young is to live honestly,  
eat slowly, and lie about your age.*  
- Lucille Ball

## Save the Date!!! Holiday Banquet

Saturday, December 7  
Multi-Purpose Center  
4800 Dreher Trail North



Details to follow in November and  
December newsletters.

## Sunshine News



It's so nice to see *Susan Cairl*  
up and around so soon. Feel  
better, Susan!

Our prayers go to *Marvin  
Reingold and family* for the  
loss of his Marvin's wife  
Eileen.

Our *Holiday Banquet* is coming up: Center pieces  
are needed. Please contact *Lo Rain Dudley* at  
561/827-5793 if you want to donate one. Our  
theme this year will be *Ugly Christmas Sweaters*.

TIP OF THE MONTH: keeping your glues in the  
refrigerator slows down the evaporation.

# What is Petrified Wood? How Does it Form? Where are their Locations?

Read more : <http://www.geologypage.com/2016/07/what-is-petrified-wood-how-does-it-form-where-are-their-locations.html#ixzz61jaKv9oV>

Follow us: [@geologypage on Twitter](#) | [geologypage on Facebook](#)

## What is Petrified Wood?

Petrified wood is the name given to a special type of fossilized remains of terrestrial vegetation. It is the result of a tree or tree-like plants having completely transitioned to stone by the process of permineralization. All the organic materials have been replaced with minerals (mostly a silicate, such as quartz), while retaining the original structure of the stem tissue. Unlike other types of fossils which are typically impressions or compressions, petrified wood is a three-dimensional representation of the original organic material. The petrification process occurs underground, when wood becomes buried under sediment or volcanic ash and is initially preserved due to a lack of oxygen which inhibits aerobic decomposition. Mineral-laden water flowing through the covering material deposits minerals in the plant's cells; as the plant's lignin and cellulose decay, a stone mold forms in its place. The organic matter needs to become petrified before it decomposes completely. A forest where such material has petrified becomes known as a petrified forest.



specimens.

## Where are their Locations?

Areas with a large number of petrified trees include:

1. **Argentina** – the Sarmiento Petrified Forest and Jaramillo Petrified Forest in Santa Cruz Province in the Argentine Patagonia have many trees that measure more than 3 m (10 ft) in diameter and 30

m (100 ft) long.

2. **Australia** – has deposits of petrified and opalised wood. Chinchilla, Queensland is famous for its 'Chinchilla Red'.

3. **Belgium** – Geosite Goudberg near Hoegaarden.

4. **Brazil**: 1- Geopark of Paleorrota, there is a vast area with petrified trees. 2- Monumento Natural das Árvores Fossilizadas (Fossil Trees Natural Monument) in Tocantins: petrified forests of dicksoniaceae (specifically Psaronius and Tietea singularis) and arthropitys 3- Petrified forests of dicksoniaceae (specifically Psaronius and Tietea singularis) and arthropitys can also be found in the state of São Paulo 4- Floresta Fóssil de Teresina near Rio Poti, Piauí, Permian (around 280-270 million years ago).

5. **Canada** – in the badlands of southern Alberta; Petrified wood is the provincial stone of Alberta. Axel Heiberg Island in Nunavut has a large petrified forest. In and around the North Saskatchewan river, around the Edmonton area.

6. **China** – in the Junggar Basin of Xinjiang, northwest China government has issued a crackdown on collecting of this material, but large slabs and even large meeting tables have been made out of the colorful petrified wood.

7. **Czech Republic, Nová Paka** – The most famous locality on Permian-Carboniferous rocks in the Czech Republic.

8. **Ecuador** – Puyango Petrified Forest (es). One of the largest collections of petrified wood in the world.

9. **Egypt** – petrified forest in Cairo-Suez road, declared a national protectorate by the ministry of environment,

## How Does it Form?

Petrified wood is a fossil in which the organic remains have been replaced by minerals in the slow process of being replaced with stone. This petrification process generally results in a quartz chalcedony mineralization. Special rare conditions must be met in order for the fallen stem to be transformed into fossil wood or petrified wood. In general, the fallen plants get buried in an environment free of oxygen (anaerobic environment), which preserves the original plant structure and general appearance. The other conditions include a regular access to mineral rich water in contact with the tissues, replacing the organic plant structure with inorganic minerals. The end result is petrified wood, a plant, with its original basic structure in place, replaced by stone. Exotic minerals allow the red and green hues that can be seen in rarer

# What is Petrified Wood? How Does it Form? Where are their Locations? (continued)

Read more : <http://www.geologypage.com/2016/07/what-is-petrified-wood-how-does-it-form-where-are-their-locations.html#ixzz61jaKv9oV>

Follow us: [@geologypage on Twitter](#) | [geologypage on Facebook](#)

also in the area of New Cairo at the Extension of Nasr city, El Qattamiyya, near El Maadi district, and Al Farafra oasis.

10. **France** – petrified forest in the village of Champclauson

11. **Germany** – the museum of natural history in Chemnitz has a collection of petrified trees, from the in situ Chemnitz Petrified Forest, found in the town since 1737.

12. **Greece** – Petrified Forest of Lesvos, at the western tip of the island of Lesbos, is possibly the largest of the petrified forests, covering an area of over 150 km<sup>2</sup> and declared a National Monument in 1985. Large, upright trunks complete with root systems can be found, as well as trunks up to 22 m in length.

13. **India** – a geological site known for its petrified wood Thiruvakkarai Village in Chennai, Tamil Nadu. The site is protected by the Geological Survey of India. Petrified wood covers a large area in this site. Petrified Wood has also been discovered in Dholavira in Kutch, Gujarat, dating back to 187-176 million years.

14. **Indonesia** – petrified wood covers several area in Banten and also in some part of Mount Halimun Salak National Park.

15. **Italy**:1-Foresta fossile di Dunarobba, petrified forest near Avigliano Umbro, Umbria (Central Italy), age Piacenzian.2- Foresta pietrificata di Zuri – Soddì, petrified forest near Soddì (Province of Oristano, Sardinia), age Chattian-Aquitanian.

16. **Libya** – Great Sand Sea – Hundreds of square miles of petrified trunks, branches and other debris mixed with Stone Age artifacts

17. **Namibia** – petrified forest of Damaraland

18. **New Zealand**:1- Curio Bay on the Catlins coast contains many petrified wood examples.2- Fossil Forest, Takapuna, Auckland, New Zealand

19. **Saudi Arabia** – petrified forest north of Riyadh

20. **Thailand** – Bantak Petrified Forest Park in Ban Tak District

21. **Ukraine** – petrified araucaria trunks near Druzhkivka

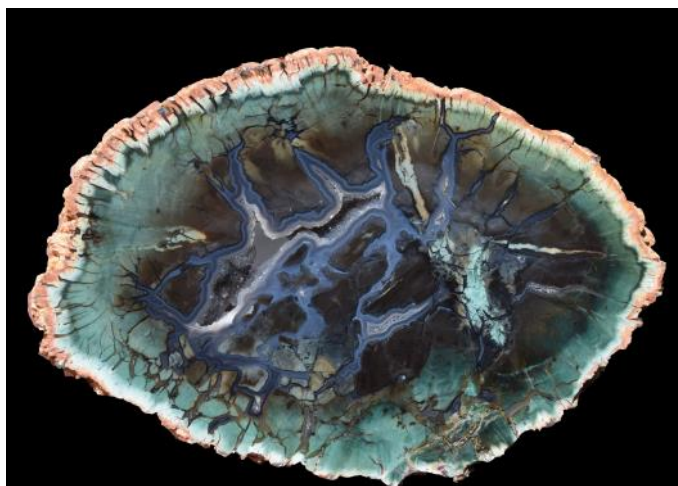
22. **United Kingdom** – many examples of petrified submerged forests can be found at low tide around the coast of England and Wales.1- Fossil Grove, Glasgow,

Scotland2- Fossil Forest, Dorset, England

**United States** – petrified wood sites include:1- Petrified Wood Park in Lemmon, South Dakota2- Ginkgo/Wanapum State Park in Washington State3- Petrified Forest National Park in Arizona4- Petrified Forest (California) in California5- Mississippi Petrified Forest in Flora, Mississippi6- Florissant Fossil Beds National Monument near Florissant, Colorado7- Yellowstone Petrified Forest and Gallatin Petrified Forest, Yellowstone National Park, Wyoming8- The south unit of Theodore Roosevelt National Park outside Medora, North Dakota9- Gilboa Fossil Forest, New York10- Escalante Petrified Forest State Park in Utah11- Agate Desert in the Upper Rogue River Valley near Medford, Oregon

## Artificial petrified wood

Artificial petrified wood has been produced in a Washington laboratory. In the process, small cubes of pine are soaked in an acid bath for two days, then in a silica solution for another two. The product is then cooked at 1400 °C in an argon atmosphere for two hours. The result was silicon carbide ceramic which preserved the intricate cell structure of the wood.



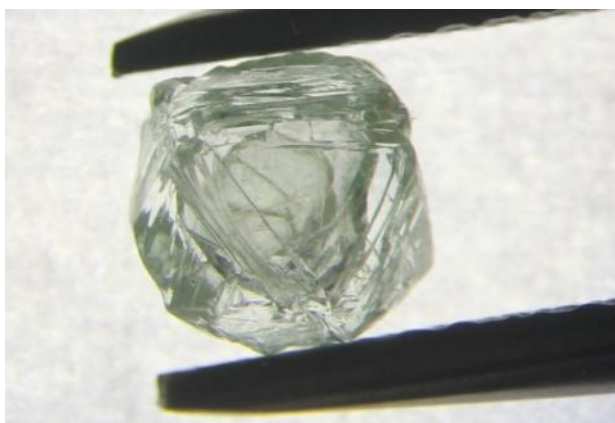
### ZIMBABWE PETRIFIED WOOD

Premium specimen from Gokwe, Zimbabwe. The green coloring is a result of chromium present in the agate. From the personal collection of club member Alan Meltzer.



# A Diamond With a Whole Other Diamond Inside It Was Discovered in Siberia

From [sciencealert.com](http://sciencealert.com)—MICHELLE STARR, 9 OCT 2019



Humans have been mining diamonds for a long time, but a new stone hauled from the belly of the Earth could very well be a first. The diamond itself is hollow - and inside is another diamond, freely moving around.

It was discovered in a Russian mine in Siberia, and has been named the Matryoshka Diamond, after the Russian nesting matryoshka dolls.

Inclusions and flaws in diamonds are extremely common; in fact, most diamonds have some sort of flaw, or piece of mineral trapped inside. It's not a bad thing - in fact, we've gained access to some pretty rare stuff from deep underground because it's been trapped in diamonds as they

form.

But a diamond in a diamond? That, according to Russian diamond mining group ALROSA, is a new one.

The Matryoshka Diamond is not a huge stone - just 0.62 carats (0.124 grams), with maximum dimensions of 4.8 x 4.9 x 2.8 millimetres. The inner diamond is even tinier - 0.02 carats (0.004 grams), measuring just 1.9 x 2.1 x 0.6 millimetres.

Sharp eyes detected something unusual about the stone during the sorting process, and it was sent to ALROSA's Research and Development Geological Enterprise for assessment. There, scientists subjected the diamond to Raman and infrared spectroscopies, and X-ray microtomography.

"The most interesting thing for us was to find out how the air space between the inner and outer diamonds was formed," said Oleg Kovalchuk of ALROSA's Research and Development Geological Enterprise. The researchers have a couple ideas which involve processes that may have occurred in Earth's mantle.

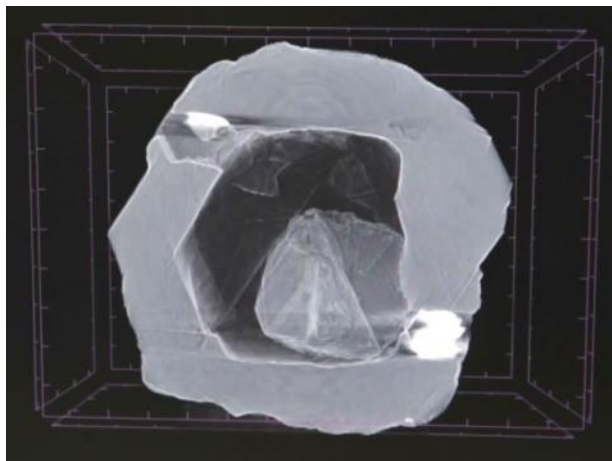
According to one of their hypotheses, "a layer of porous polycrystalline diamond substance was formed inside the diamond because of ultra-fast growth, and more aggressive mantle processes subsequently dissolved it. Due to the presence of the dissolved layer, one diamond began to move freely inside another, just like a matryoshka nesting doll."

They also estimate that the diamond may be over 800 million years old, although that is yet to be verified. According to a Bloomberg report, the diamond is going to be sent to the Gemological Institute of America for further analysis.

Because it's such a rare find, the company has yet to estimate its worth.

"As far as we know, there has been no such diamond in the history of global diamond mining," Kovalchuk said.

"This is really a unique creation of nature, especially since nature abhors a vacuum. Usually, in a case like this, the minerals would be replaced by others without forming a cavity."



# The Metaphysical Properties of Gemstones

From <https://bestcrystals.com/pages/metaphysical-properties>

Click on the gemstone names for more in-depth information.

**Agate** Balances ying-yang energy, stabilizes the aura. Facilitates discernment. Imparts strength and courage. Opens one to innate creative talents. (There are many forms of agate, each with specific properties.)

**Amber** Purifies body, mind, and spirit. Balances electromagnetics of the body and allows even flow of energies. Provides a positive, soothing energy. Spiritualizes the intellect.

**Amethyst** Sedative energy. Facilitates spirituality and contentment. Stone of stability, strength, and peace. Excellent for meditation. Enhances psychic ability.

**Aventurine** Independence, leadership, creativity. Balances male/female energies. Aligns mental, physical, emotional, and auric bodies.

**Aquamarine** Courage, intellect, protection. Assists spiritual awareness, actualization.

**Azurite** Awakens psychic ability, insight, intuition. Third eye. Excellent for clearing the mind in meditation.

**Amazonite** Balancing energy, harmony, universal love.

**Calcite** Energy amplifier, teacher. Optical Calcite is excellent for clearing and cleansing.

**Celestite** Excellent stone for dream recall and astral travel. Hope and harmony. Communication.

**Chrysocolla** Strength, balance. Promotes harmony and attunement to the earth. Purifies one's environment.

**Crysoprase** Balances yin-yang energy. Acceptance of self and others.

**Citrine** Positive energy - stone needs no cleansing. Dissipates negative energy. Warmth, joy, optimism.

**Cobaltian Calcite** Creativity, harmony, and dispels negativity.

**Copal** Excellent for strengthening the abilities of the mind, and altered states of consciousness. Amplifies one's energy field.

**Danburite** Powerful intellectual activator. Aids with communication and relationships with others. Helps remove toxins from the body.

**Emerald** Loyalty, sensitivity, harmony, tranquility. Assists in memory retention and mental clarity.

**Epidote** Enhances perception and personal power. Excellent for attunement in all aspects of awareness, improvement, abundance, and healing.

**Fairy Stone** Good luck, protection against evil spirits, and brings health and prosperity to the home.

**Fire Agate** Spiritual flame, perfection. Protects and dispels fears. Progression, advancement, inspiration.

# The Metaphysical Properties of Gemstones

From <https://bestcrystals.com/pages/metaphysical-properties> (continued)

**Fuchite** Aids in the assessment of personal issues, enhances knowledge and decision making.

**Garnet** Commitment, devotion, love, stability and order. Even flow of energy.

**Hematite** Excellent for the mind. Grounding.

**Herkimer Diamond** Awareness, attunement, clairvoyance, telepathy. Good for information retention.

**Howlite** Memory, knowledge, and progress. Encourages reasoning, observation, discernment, patience, and tact. Can eliminate pain, stress, and anger.

**Kunzite** Communication, love, peace. Protects and dissolves negativity. Excellent for meditation.

**Kyanite** Never needs cleaning or clearing, aligns all chakras. Tranquility, communication, psychic awareness. Excellent for meditation and dream recall.

**Labradorite** Represents the light of the universe, extra-terrestrial energy. Intuition, subconscious. Illumination.

**Lapis Lazuli** Knowledge, wisdom, perfection, protection, creative expression.

**Lepidolite** Honesty, stability, hope, acceptance. Assists in change and transition. Facilitates astral travel.

**Lingam Stone** Stone of the Kundalini. Awakens the major energy centers of the chakras, from the base to crown. Balances male (yang) energy.

**Malachite** Transformation, spiritual development. Clears the way to attain goals. Fidelity, loyalty, reasoning ability.

**Moldavite** Clarity, eternity. Extra-terrestrial, interdimensional access.

**Moonstone** Lunar, female energy. Emotional, intuitive. Rhythms, cycles, destiny.

**Obsidian** Dispels negativity. Grounding, healing, protective. Helps one to clearly see one's flaws and the changes that are necessary.

**Onyx** Centering, self-control, intuitive guidance. Assists in the grieving process.

**Opal** Creativity, inspiration, imagination.

**Peridot** Healing, protective. Allows one to understand changes in one's life, regulates life cycles.

**Petrified Wood** Grounding, provides strength. Stone of transformation.

**Prehnite** Stone for dreaming and remembering. Facilitates contact with non-physical entities and extraterrestrials. Good for use in grid work. Inspiration and prophecy.

# The Metaphysical Properties of Gemstones

From <https://bestcrystals.com/pages/metaphysical-properties> (continued)

<u><a href="#">Pyrite</a></u>	Shields from negative energy, good stone of protection. Enhances intellect and memory. Symbol of the sun.
<u><a href="#">Quartz Crystal (clear)</a></u>	Universal crystal, clarity of consciousness....see the quartz crystal page for complete info.
<u><a href="#">Rhodochrosite</a></u>	Love energy. Excellent stone for balance in all areas.
<u><a href="#">Ruby</a></u>	Loving, nurturing, spirituality ,wealth, protection.
<u><a href="#">Rutilated Quartz</a></u>	Intensifies energy of the crystal. Stimulates brain. Inspiration, clairvoyance.
<u><a href="#">Sapphire</a></u>	Joy, peace, beauty, prosperity.
<u><a href="#">Selenite</a></u>	Clarity of consciousness, awareness, insight, good judgement. Aids in accessing past/future lives.
<u><a href="#">Silver</a></u>	Mirror to the soul. Eloquence. Connects physical and astral bodies. In jewelry, it provides a balanced setting that retains the qualities of the stone it holds. Lunar energy. Cleansing, balancing.
<u><a href="#">Smoky Quartz</a></u>	Dissolves negativity, grounding, balancing. Excellent for meditation.
<u><a href="#">Sodalite</a></u>	Logic, efficiency, truthfulness. Enhances group communication.
<u><a href="#">Staurolite</a></u>	Known as a talisman of good luck. Aids relief of stress and depression. Provides connection and balance between the physical, astral, and extra-terrestrial planes.
<u><a href="#">Stromatolite</a></u>	These stones hold the energy of the most ancient life on earth. Promotes perseverance, strength, stability, connection to life.
<u><a href="#">Tanzanite</a></u>	Protection, safety. Perfect symmetry of personal power and actualization. Brings together all aspects of communication and psychic power. Can be used to stimulate visions of higher spiritual realms.
<u><a href="#">Tiger Eye</a></u>	Earthy, grounding. Represents sun and earth. Optimism, insight, personal power.
<u><a href="#">Topaz</a></u>	Success, true love, individuality, creativity, joy.
<u><a href="#">Tourmaline</a></u>	Inspiration, understanding, self-confidence, balancing. Electrical.
<u><a href="#">Tourmalinated Quartz</a></u>	Strength, balancing. Combines attributes of tourmaline and quartz.
<u><a href="#">Vanadinite</a></u>	Facilitates mental processes, allows for a deep state of meditation. Promotes thrift in spending and order to one's life.
<u><a href="#">Zircon</a></u>	Virtue, unification, continuity, purity.

This information is provided for your inspiration and reference. In no way is it meant to replace proper diagnosis or treatment by a qualified therapist or physician. Complete information is available in the book [Love is in the Earth by Melody](#).

[bestcrystals.com](https://bestcrystals.com): "We are everything crystal and mineral. From Agate to Zircon... in all price ranges... for kids to serious collectors alike, we have the finest the earth has to offer."

# Great Online Resources for Jewelry Makers

## [allfreejewelrymaking.com](http://allfreejewelrymaking.com)

This is a great resource for all things related to jewelry making—beading, wire work, glass work, chainmaille, metalwork, macrame, kumihimo, etc. You can:

- Download free ebooks,
- Search through hundreds of projects to find step-by-step written, illustrated instructions or video tutorials,
- Sign up to get the Project of the Day delivered to your Inbox,
- Create an account and save your favorite projects to My Jewelry Box,
- Upload instructions for one of your own designs, and
- Create a Designer Profile to feature your creations.

*Your newsletter editor's current favorite project is this **Sahara Statement Necklace** by designer **Allison Cooling** of **The Quiet Lion**. Illustrated instructions are available at*



<https://www.craftpaperscissors.com/sahara-statement-diy-necklace/>

## [wirejewelry.com](http://wirejewelry.com)

Another great resource for aspiring jewelry makers! It's a commercial site, selling jewelry making supplies such as wire, sheet metal, tools, DVDs, streaming videos, beads, stones, and supplies.

Lots of educational resources on this site as well! You can:

- Get lots of jewelry making patterns,
- Learn tips and techniques,
- Watch free videos and read featured articles,
- Check out their ideas and inspiration section, and
- Create an account and sign up for promotional videos, daily deals, daily tips, new patterns, and new product announcements.

*Here are a few of the beautiful jewelry patterns available on the site. **Click on the photos** to see the patterns.*



## ***You Might Be a Rockhound If...***

You can pronounce "molybdenite" correctly on the first try.

The polished slab on your bola tie is six inches in diameter.

The bookshelves in your home hold more rocks than books; and the books that are there are about rocks.

On a trip to Europe, you're the only member of the group who spends their time looking at cathedral walls through a pocket magnifier.

You think you know how to pronounce "chalcedony."

You are thinking about giving out rocks for Halloween.\*

*\*GMSPB suggests you continue to give out candy. Word from the Sheriff's Department is that rocks, even gemstones, are likely to be used to knock out your windows.*

You planted flowers in your rock garden.

You purchase things like drywall compound just to have another nice bucket to carry rocks in.

The club you belong to uses rocks for centerpieces for the annual Christmas dinner.\*

*\*GMSPB does indeed welcome donations of rock-themed Christmas Centerpieces. Please see [Sunshine News](#).*

The first thing you pack for your vacation is a chisel and a hammer.

From the [American Federation of Minerological Societies](#)

*\*Editorial comments in red supplied by the GMSPB Newsletter Editor.*

# UPCOMING EVENTS

October 19-20, Orlando, FL: **28th ANNUAL FOSSILS, ROCKS, GEMS & MINERAL SHOW**. Central Florida Fairgrounds, 4603 West Colonial Dr, Orlando, FL 32808. \$4 Adults, \$1 Children. Sat 9-5, Sun 10-4. [floridafossilhunters.com](http://floridafossilhunters.com)

October 11-13, Huntsville, AL: **HUNTSVILLE GEM & MINERAL SOCIETY ANNUAL SHOW**. Minerals, crystals, jewelry, lapidary, rock-hunting supplies and more. Displays, demonstrations, mining room for children, fluorescent room, and hourly drawings. Fri & Sat 10-6, Sun 12-5. Jaycee Community Building, 2180 Airport Rd SW, Huntsville AL.

October 26-27, Port St Lucie, FL: **43rd ANNUAL GEM & MINERAL SHOW**. Handcrafted jewelry, gemstones, beads, rocks, minerals, slabs, demonstrations, raffles, kids corner. Sat 9-5; Sun 10-4. \$5 online at [www.etix.com](http://www.etix.com) or \$6 at the box office. Port St Lucie Civic Center, Port St Lucie, FL.

November 2-3, Tampa, FL: **60th ANNUAL GEM & MINERAL SHOW**. 10-5 both days. Plant City Strawberry Festival, Expo Hall, 303 N Lemon St, Tampa, FL. [www.tampabayrockclub.com](http://www.tampabayrockclub.com)

November 24-25, West Palm Beach, FL: **53rd ANNUAL GEM, MINERAL, JEWELRY, BEAD, & FOSSIL SHOW**. See details throughout this newsletter.

December 6-9, Hudson, FL: **45th ANNUAL WITHLACOOCHEE ROCKHOUNDS GEM SHOW**. Veterans Memorial Park, Hudson, FL. 9-5 on Fri, Sat & Sun.

Looking to travel to one of the top gem and mineral shows in the USA? Check out the list here: [http://www.geologyin.com/p/with-literally-hundreds-of-places.html?fbclid=IwAR2zciomNwYZ8VKpYZ-hEn\\_OORxz2gxau0VV3YwuiaDwjzIKxMOx8NOYG0#bcTfcb7ksLdJi1q.99](http://www.geologyin.com/p/with-literally-hundreds-of-places.html?fbclid=IwAR2zciomNwYZ8VKpYZ-hEn_OORxz2gxau0VV3YwuiaDwjzIKxMOx8NOYG0#bcTfcb7ksLdJi1q.99)



## **American Federation of Mineralogical Societies Code of Ethics**

***A large measure of the enjoyment of our hobby consists of collecting in the field. For that reason, the members are proud to endorse the following:***

**I will respect both private and public property and will do no collecting on privately owned land without permission from the owner.**

**I will keep informed on all laws, regulations or rules governing collecting on public lands and will observe them.**

**I will, to the best of my ability, ascertain the boundary lines of property on which I plan to collect.**

**I will use no firearms or blasting material in collecting areas.**

**I will cause no willful damage to property of any kind such as fences, signs, buildings, etc.**

**I will leave all gates as found.**

**I will build fires only in designated or safe places and will be certain they are completely extinguished before leaving the area.**

**I will discard no burning material - matches, cigarettes, etc.**

**I will fill all excavation holes which may be dangerous to livestock.**

**I will not contaminate wells, creeks, or other water supplies.**

**I will cause no willful damage to collecting material and will take home only what I can reasonably use.**

**I will practice conservation and undertake to utilize fully and well the materials I have collected and will recycle my surplus for the pleasure and benefit of others.**

**I will support the rockhound project H.E.L.P. (Help Eliminate Litter Please) and will leave all collecting areas devoid of litter, regardless of how found.**

**I will cooperate with field-trip leaders and those in designated authority in all collecting areas.**

**I will report to my club or federation officers, Bureau of Land Management or other authorities, any deposit of petrified wood or other materials on public lands which should be protected for the enjoyment of future generations for public educational and scientific purposes.**

**I will appreciate and protect our heritage of natural resources.**

**I will observe the "Golden Rule", will use Good Outdoor Manners and will at all times conduct myself in a manner which will add to the stature and Public Image of Rockhounds everywhere.**

## Volunteer Swap with Port Saint Lucie Club

The Port Saint Lucie Club has offered to send us volunteers to help with our Annual Show in November, in exchange for some volunteers from our club helping at their Annual Show in October. Great idea, right? We can always use the help!

Information on the Saint Lucie show is directly below. If you think you can help with their show, please contact Dianna Ray at [countrycutie29@aol.com](mailto:countrycutie29@aol.com) or call or text 561/707-6753.

## Kiddy Korner

This is a new feature for our 2019 Show in November. Shir-Lee Rosenberg is putting together a fun area for the kids near the gem mine. There will be several stations with interactive activities. If you're child-oriented, outgoing, patient, and able to keep up with the kids, consider volunteering in this area!

Shir-Lee is in need of donations of permanent markers for Kiddy Korner. If you have some to spare or could buy some to donate, she would be grateful!



### 43rd ANNUAL Handcrafted Fine Jewelry, Rock, and Gem Show

Saturday, October 26  
9:00 AM – 5:00 PM

Sunday, October 27  
10:00 AM – 4:00 PM

at the  
Port St. Lucie Civic Center

Buy tickets online for \$5.00 ([www.Etix.com](http://www.Etix.com))  
or at the Civic Center Box Office for \$6.00 (772-807-4488)

- ◆ Custom-designed, Handcrafted Jewelry ◆
- ◆ Gemstones ◆ Beads ◆ Rocks ◆ Minerals ◆ Slabs ◆
- ◆ Gold & Silver Buyer On Site ◆
- ◆ Demonstrations ◆ Raffles ◆ Kids Corner ◆



PRESENTED BY  
St. Lucie County Rock & Gem Club  
[www.slrockandgem.org](http://www.slrockandgem.org) • 772-462-6597

Scented Dragon

CO-SPONSORED BY  
Treasure Coast  
Estate Buyers

JEWELRY DESIGN  
STUDIO



Find us on  
f @gemandmineralspb  
t @gemandminerals  
i @gemandminerals

### The Gem & Mineral Society of the Palm Beaches, Inc. is proud to present our 53rd ANNUAL Gem, Mineral, Jewelry, Bead and Fossil Show

Featuring exhibits, speakers &  
prize drawings!

November 23–24, 2019  
South Fl. Fairgrounds/ Expo Center East  
9067 Southern Blvd. / West Palm Beach, FL  
33411

ADULTS \$9  
2-DAY PASS \$14  
CHILDREN

Saturday 9AM to 6PM

GEM MINING  
SPIN-THE-WHEEL GAME  
(suggested donation \$1/spin)  
GEODE CRACKING  
FREE PARKING  
PRIZE DRAWINGS  
DEMONSTRATIONS  
SPEAKERS  
EXHIBITS  
KIDDIE KORNER  
FACE & ROCK PAINTING  
Proceeds from this event support  
GMSPB INC (a 501(c)(3) Corp.)

The Gem & Mineral Society  
of the Palm Beaches,  
Inc.  
\*\*\*\*\*  
\*\*  
Present this Coupon  
for  
\$1.00 OFF\*ONE  
ADULT  
ADMISSION  
(Feel Free to Copy this Coupon)  
LIMIT ONE COUPON  
PER PERSON



## **VOLUNTEER TIME FOR THE ANNUAL SHOW!!!**

November 23rd and 24th, the weekend of our annual show, will be here before we know it!! Our 53rd!!! That means it is time to start thinking about volunteering NOW. Here's a list of volunteer positions and the duties required. YOU can make a difference! Without you, our society members, it would be impossible to fill the many time periods necessary to make the 2019 show the best show yet! Over 100 volunteer shifts need to be filled. The club cannot run without the proceeds from the show!!

PLEASE LET US COUNT ON YOU.

### **THURSDAY Set-up crew - NOVEMBER 21st**

Approximately 6 people are needed to move tables around and set up each booth area. We will be supervising Fair- grounds help in the placement of tables according to our floor plan. Also, we will be able to do the Society's setup on Thursday. We have hired help to do the heavy lifting, but we still need members to assist in directing helpers on where unloaded materials go at the fairgrounds. Materials such as our display cases, from the storage unit, must be loaded in the rented truck, and brought to the Fairgrounds, unloaded and set-up. We will also be setting up the flume.

### **FRIDAY SET/UP/SUNDAY TAKE DOWN - NOVEMBER 22nd and 24th**

As many volunteers as we can get are needed to set-up during the day on Friday and to take-down after the show from 5:00 PM on Sunday. Friday, the display cases need to be assembled, as well as many odds and ends jobs too numerous to go into here. On Sunday, after the show is over, everything must be packed up, loaded in the truck, and delivered back to the storage area. Again, we have hired help to do the heavy lifting, but we still need members to assist in directing helpers on where materials go to be loaded into the truck. We also will need some people to go to the storage location to direct the hired help on where to put the unloaded materials

### **TICKET TAKERS, NOVEMBER 23rd and 24th**

Two people are needed for each 2-hour time slot. Responsibilities include taking tickets at the entrance doors, tearing the ticket in half, depositing one half in the box, and giving the second half to the guest. This position requires either sit- ting on a stool or standing. Requirements include a pleasant, friendly, helpful, courteous, and kind personality. At times, ticket takers are very busy. This is a very important position because ticket takers are the " first impression" that people get of our society.

### **INFORMATION TABLE - NOVEMBER 23rd and 24th**

Three people are necessary for each 2-hour time slot. Responsibilities include answering questions concerning the show, checking in volunteers and giving them their badges and providing information about our society's activities. Information attendants should be able to direct visitors and provide information about everything from who is in charge, to where a particular dealer is located. This position requires sitting at the information desk. The ability to be pleasant and helpful, without getting flustered, is important.

### **SCHOLARSHIP FUND PRIZE DRAWING - NOVEMBER 23rd and 24th**

Two people per 2-hour time slot are needed. Responsibilities include encouraging people to purchase tickets for the prize drawing of the many items available. It is extremely important to be friendly, inviting, cheerful, and encouraging without being insistent. This position requires some standing. The main objective is to point out the items that may be won with only a \$1.00 ticket

**SHOW SECURITY - NOVEMBER 23rd and 24th**

Two to four people are needed for each 2-hour time slot. Responsibilities are to observe people, watch for those acting in a disorderly manner (for example, drunk, smoking, or shoplifting), and report it to Show Chairman, Committee Chairperson, Fairgrounds Security, or Armed Security. Show Security guards should NEVER confront or accuse anyone. They ONLY report the incident. Greeting the public in a friendly manner is also important. This position requires walking around or standing. PLEASE DO NOT SHOP OR SIT DOWN AND EAT DURING YOUR SHIFT.

**DEMONSTRATIONS- NOVEMBER 23rd and 24th**

People are needed to demonstrate their skills during each 2-hour time slot. The area is large enough for several demonstrators to present simultaneously. This is the opportunity to greet the public and show-off by participating in beading, stained glass, wire wrapping, chain making, or any other lapidary skills. If you are interested in volunteering to demonstrate at the show, please contact demonstration coordinator Kelly Azor-Anderson at 561-635-7619

**LUNCH ON SET-UP DAY - NOVEMBER 22nd**

Lunch will be served to the dealers, society members, and fairgrounds workers on Friday, set-up day. We need someone who will shop for the supplies (we have a list - sandwich makings, drinks, salad, plates, utensils, donuts, coffee, etc.) Everyone makes their own sandwiches. You would be advanced funds for shopping. Serving is buffet style. We need a couple of volunteers there to oversee the buffet between 9am and 5pm - 2 hour shifts.

**MINING / GEODE CRACKING/SPINNING WHEEL GAME/NEW—KIDDIE KORNER**

NOVEMBER 23rd and 24th

We need the following people for each 2-hour time slot to run the mining area effectively. Duties include:  
2 people working together to collect money and use an iPad for credit card payments, enter inventory on an iPad and give out tickets

1 person to crack geodes

1 person for working the Spin-the-Wheel game and for keeping the table stocked with prizes. The game involves a table marked with squares that correspond to numbers on the wheel. The player wins the prize in the square matching the number on the wheel.

1 person to identify gemstones at the flume area. Volunteers will be briefed on what gemstones are available in the mine. There will be cards available with gemstone samples to aid in identification if participants request the information.

1 person to help visitors select geodes.

1 person to fill bucket bags and fill buckets as needed.

1 person to keep the flume running smoothly, moving used gravel, handing out screens, etc.

3 people to man the 3 stations for children of all ages. There will be a face painter in this area. Activities include a cornhole game, activities about dinosaurs, and a raffle. Requirements for volunteers include being child-oriented, interactive, very patient, and able to be physically active (not sitting)

This is a very active area and these volunteer positions, with few exceptions, are not sedentary positions.

Please remember, if you commit to an assigned position, please perform those duties unless asked to temporarily work in an extra busy area.

# VOLUNTEER FORM

If you really want your choice of positions, remember to contact us early, it is first come first serve.

The form can be turned in to any of the persons listed below, in whichever manner is easiest for you. Turn the form in at any upcoming Membership meeting, Email, phone or mail.

Dianna Ray  
561-707-6753  
countrycutie29@aol.com

Walt Triche  
561-628-1031  
wtriche@gmail.com

Barbara Ringhiser  
561-379-4307  
bar5678@aol.com

By mail:  
GMSPB Volunteers  
PO Box 18095  
West Palm Beach, FL 33416-8095

Name: \_\_\_\_\_ Phone: \_\_\_\_\_

Best time to call: \_\_\_\_\_ Email: \_\_\_\_\_

Positions interested in:

---

---

---

(use additional sheet if necessary)

Please circle the shifts for which you are available:

Friday, Nov. 22 (set-up, lunch)

9-11am

11am-1pm

1-3pm

3-5pm

Saturday, Nov. 23

9-11am

11am-1pm

1-3pm

3-6pm (3 hours)

Sunday, Nov. 24

10 - Noon

Noon - 2pm

2 - 5pm (3 hours)

5 - ?pm (take down)

# October

<b>Sun</b>	<b>Mon</b>	<b>Tue</b>	<b>Wed</b>	<b>Thu</b>	<b>Fri</b>	<b>Sat</b>
		<b>1</b>	<b>2</b> <b>BOARD MEETING</b> 7:00 PM	<b>3</b> Open Shop 12:30-3:30 PM General Work Dennis 561/255-0292	<b>4</b> Open Shop 6-9 PM General Work Susan 561/293-1298	<b>5</b> Open Shop 10-2 General Work Lee 561/389-8584
<b>6</b>	<b>7</b> Open Shop 10:30AM - 5 PM General Work <b>SHOW COMMITTEE MEETING</b> 7:00 PM	<b>8</b>	<b>9</b>	<b>10</b> Open Shop 12:30-3:30 PM General Work Dennis 561/255-0292	<b>11</b> Open Shop 6-9 PM General Work Susan 561/293-1298	<b>12</b> Open Shop 10-2 General Work Lee 561/389-8584
<b>13</b>	<b>14</b> Open Shop 10:30AM - 5 PM General Work Samantha 631/764-6556	<b>15</b>	<b>16</b>	<b>17</b> Open Shop 12:30-3:30 PM General Work <b>MEMBERSHIP MEETING</b> 7:30 PM	<b>18</b> Open Shop 6-9 PM General Work Susan 561/293-1298	<b>19</b> Open Shop 10-2 General Work Lee 561/389-8584
<b>20</b>	<b>21</b> Open Shop 10:30AM - 5 PM General Work Samantha 631/764-6556	<b>22</b>	<b>23</b>	<b>24</b> Open Shop 12:30-3:30 PM General Work Dennis 561/255-0292	<b>25</b> Open Shop 6-9 PM General Work Susan 561/293-1298	<b>26</b> Open Shop 10-2 General Work Lee <b>ST LUCIE GEM SHOW</b>
<b>27</b> <b>ST LUCIE GEM SHOW</b>	<b>28</b> Open Shop 10:30AM - 5 PM General Work Samantha 631/764-6556	<b>29</b>	<b>30</b>	<b>31</b> Open Shop 12:30-3:30 PM General Work 		

# November



Sun	Mon	Tue	Wed	Thu	Fri	Sat
					1 Open Shop 6-9 PM General Work Susan 561/293-1298	2 Open Shop 10-2 General Work Lee 561/389-8584
3	4 Open Shop 10:30AM - 5 PM General Work Samantha 631/764-6556	5	6 BOARD MEETING 7:00 PM	7 Open Shop 12:30-3:30 PM General Work Dennis 561/255-0292	8 Open Shop 6-9 PM General Work Susan 561/293-1298	9 Open Shop 10-2 General Work Lee 561/389-8584
10	11 Open Shop 10:30AM - 5 PM General Work SHOW COMMITTEE MEETING 7:00 PM	12	13	14 Open Shop 12:30-3:30 PM General Work Dennis 561/255-0292	15 Open Shop 6-9 PM General Work Susan 561/293-1298	16 Open Shop 10-2 General Work Lee 561/389-8584
17	18 Open Shop 10:30AM - 5 PM General Work Samantha 631/764-6556	19	20	21 Open Shop 12:30-3:30 PM SHOW SETUP MEMBERSHIP MEETING 7:30 PM	22 Open Shop 6-9 PM General Work Susan 561/293-1298 SHOW SETUP	23 53rd ANNUAL SHOW
24 53rd ANNUAL SHOW	25 Open Shop 10:30AM - 5 PM General Work 631/764-6556 Samantha	26	27	28 happy thanks giving	29 Open Shop 6-9 PM General Work Susan 561/293-1298	30 Open Shop 10-2 General Work Lee 561/389-8584

# SHOP TALK

## Open Shop Schedule

Open shop is available for members use only, but visitors are welcome to stop by during open shop hours. Open shop fees are \$5.00 for the first 3 hours and \$7.00 for time over three hours.



Important! Members must complete a 6 class Certification Class before using the cabbing equipment. This class runs for six consecutive weeks for 3 hours each week to provide safety instructions and cabbing techniques. If you received training elsewhere, you will still need to demonstrate your proficiency before using shop equipment. For information on cabbing certification please call Susan Cairl @ 561-293-1298.

### Open Shop Hours:

Mondays 10:30am - 5:00pm, Samantha Lazzaro, Shop Steward - 631-764-6556  
Tuesdays Evenings by Appointment - Laura Simmons, Shop Steward - 407-234-0444  
Thursdays 12:30pm - 3:30pm, Dennis Rietwyk, Shop Steward - 561-255-0292  
Fridays 6:00pm - 9:00pm, Susan Cairl, Shop Steward - 561-293-1298

NEW: We no longer ask you to call the shop steward before coming to the shop. If shop hours are listed on the calendar, the shop will be open. Phone numbers are listed in case you have a question for the shop steward.

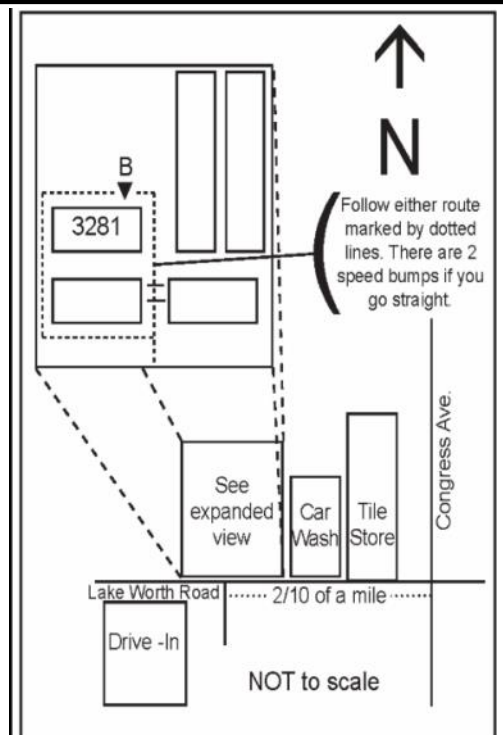
## Shop Report

Open shop is available for lapidary, metal work, enameling, fused glass, classes and to use the library. You must be certified to use the kiln! For kiln certification and classes, please call Samantha Lazzaro.

At the present time, kiln use is limited to Monday Open Shop Hours. For beginning silversmith classes, please call Laura Simmons. Additional classes will be announced as they become available. When visiting the shop please know:

- ◆ You will be asked to sign a one-time liability waiver and be given a copy of the shop rules
- ◆ Always sign in and out of the log book and complete the information on the sign in sheet
- ◆ Drinks and food are permitted in the outer room only
- ◆ There is no fee to use the library or reference videos available in the shop

The street address of the shop is:  
3281 Lake Worth Road, Suite B, Lake Worth, FL 33461



## AVAILABLE CLASSES

CLASS	INSTRUCTOR	COST	DATE/TIME/NOTES
◇ Introduction to Chainmail ◇ How to Use the Jumpringer ◇ Introduction to Metalsmithing  ◇ Viking Wire Weave	Laura Simmons 407/234-0444	\$30 + \$10 materials fee \$10 + \$5 materials fee \$50 + \$30 materials (copper) or \$60 materials (silver) \$30 + \$15 fee	Contact instructor to arrange.
Cabochon sessions Six 3-hr sessions	Susan Cairl 561/293-1298	\$75 + \$20 materials fee	Contact instructor to arrange.
Cold Connections Class Series: ◇ Explosion Pendant ◇ Fold Forming Bracelet w/Beveled Stone Setting ◇ Scrapbook Bracelet (rivets) ◇ Metal Etching & Air Chasing Bracelet ◇ 3D Pendant w/Druzy Stone Slice NEW!	Arlene Lazzaro 516/810-3495	\$40 + \$35 materials fee \$40 + \$35 materials fee \$40 + \$35 materials fee \$40 + \$40 materials fee \$40 + \$40 materials fee	Contact instructor to arrange.
Enameling	Samantha Lazzaro 561/372-2359	\$40 + \$50 materials fee	Contact instructor to arrange.
Flat Lap	Susan Cairl 561/293-1298	\$40 + \$10 supplies fee	Contact instructor to arrange.
Gem Tree	Dianna Ray 561/707-6753	TBD	Contact instructor to arrange.
Metalsmithing: ◇ Alien Prong Ring	Arlene Lazzaro 516/810-3495	\$40 + \$15 materials fee	Contact instructor to arrange.
Wire Fan Bracelet Class	Debi Kachman 561/568-8736	\$30 + \$20-50 materials fee (depending on metal) OR supply list can be provided	Contact instructor to arrange.
Wire Sculpture Class	Debi Kachman 561/568-8736	\$30 + \$20-50 materials fee (depending on metal) OR supply list can be provided	Contact instructor to arrange.

## The Rockhound

Official publication of the Gem & Mineral Society of the Palm Beaches, Inc.

### MEMBERSHIP DUES

Junior Membership—\$10.00  
(Under age 18)  
Single Membership—\$20.00  
(Over age 18)  
Family Membership—\$30.00  
(Includes 2 adults and children under age  
18 in a single household)

*Membership expires on December 31st  
each year and is due by the end of  
February of the new year.*

To renew your membership, make your  
check or money order to:

Gem & Mineral Society of the Palm  
Beaches, Inc. and mail to:

Membership Coordinator  
Gem & Mineral Society  
P.O. Box 18095  
West Palm Beach, FL 33416-8095

### NAME TAGS

Available from:  
Ace Marking Devices (\$12.00)  
3308 S. Dixie Hwy.  
West Palm Beach, FL 33405  
561/833-4073

### SHOP FEES

Up to 3 hours shop time - \$5  
Over 3 hours shop time - \$7

SEE CALENDAR FOR OPEN SHOPS

### SHOP STEWARDS

Head Shop Steward:  
Susan Cairl 561/293-1298

Laura Simmons 407/234-0444  
Dennis Rietwyk 561/255-0292  
Samantha Lazzaro 561/372-2359

**Shop Phone:**  
561/585-2080

### 2019 OFFICERS

President*	Laura Simmons	407/234-0444
1st Vice President*	Dianna Ray	561/707-6753
2nd Vice President*	Barbara Ringhiser	561/379-4307
Secretary*	Clara Pflueger	201/566-6492
Treasurer*	Jenny Wright	561/634-1427

### 2019 DIRECTORS

Head Shop Steward*	Susan Cairl	561/293-1298
Membership*	David Taylor	561/644-1888
Newsletter Editor*	Laura Phillips	561/523-3594
Member-at-Large*	Lo Rain Dudley	561/827-5793
Show Chairman*	Walter Triche	561/628-1031
Webmaster*	Richard Tracey	561/318-6891

### COMMITTEE CHAIRPEOPLE

Hostess	Samantha Lazzaro	561/372-2359
Jr. Rockhound Program	Mitchell Turk	561/506-4655
Librarian	Shop Steward on Duty	
Programs	Barbara Ringhiser	561/379-4307
Raffle Coordinator	Lo Rain Dudley	561/827-5793
Refreshments	Arlene Lazzaro	516/810-3495
Sunshine Committee	Lo Rain Dudley	561/827-5793
Social Events	Debi Kachman	561/793-6777
Webmaster	Richard Tracey	561/318-6891

\*Denotes a Voting Member of the Executive Committee.

### WEBSITE

[www.gemandmineralsociety.org](http://www.gemandmineralsociety.org) or [www.gmspb.org](http://www.gmspb.org)

### Club Email Addresses

membership@gmspb.org  
newsletter@gmspb.org  
president@gmspb.org  
show@gmspb.org  
vendorinfo@gmspb.org  
webmaster@gmspb.org

Link to our [smile.amazon.com](https://smile.amazon.com) account:

[http://smile.amazon.com/ch/59-6196330](https://smile.amazon.com/ch/59-6196330)

The Gem & Mineral Society of the Palm Beaches, Inc. is a 501 (c) (3) corporation and a member of the Eastern and Southeastern Federations of Mineral and Lapidary Societies, and is affiliated with the American Federation of Mineralogical Societies. Monthly meetings are held on the third Thursday of the month except for December, which is held on the second Thursday. Meetings start at 7:30 PM at the former Garden Club building (across from the Science Center), 4800 Dreher Trail North, West Palm Beach, FL 33405.

*The opinions, beliefs and viewpoints expressed by the various authors in this newsletter do not necessarily reflect the opinions, beliefs and viewpoints of the Gem and Mineral Society of the Palm Beaches ("GMSPB"). GMSPB does not verify any claims made for accuracy, and is not responsible for the views expressed. Nothing contained herein constitutes any sort of professional advice, including but not limited to legal, medical, or financial advice. Any action you take based on information published in The Rockhound is strictly at your own risk.*

Send comments or submissions to [laurajeanphillips@gmail.com](mailto:laurajeanphillips@gmail.com)