



The Rockhound

Official Publication of the Gem & Mineral Society of the Palm Beaches, Inc.

www.gemandmineralsociety.org
March 2019 Volume 52 Issue 6

President's Message

Hello Rockhounds!

Spring is here, and it's time for traveling! In fact, I'm writing this column from Mississippi, where I'm visiting my husband's family and attending/working at an event related to one of my other hobbies. Usually this event overlaps with our March General Meeting, and I can't be in two places at once...but this year it works out that I'll be home in time!

Coming up, I'll be traveling again, this time for our Club. Shir-lee Rosenberg has taken the lead in planning a field trip to Hogg Mine in LaGrange, GA; we are still firming up plans, but look elsewhere in the Newsletter for more information. I'm sure we'll be talking about it at March's meeting too. I'm definitely going, and looking forward to bringing back all kinds of cool things!

Also, at the end of May/beginning of June, I'll be representing the Club at the EFMLS (Eastern Federation of Mineralogical and Lapidary Societies) Annual Meeting in Orange County, New York. During my past years as Club President, I attended the annual meetings, and I have now been contacted by their Nominating Committee and asked to serve on the EFMLS Board. I have accepted the nomination to serve as Second Vice President. If all goes well, I will likely be installed at the Annual Meeting, to begin serving later in the year. If you have anything you would like brought up at the regional level, or would just like more information, please send me an email or see me at a meeting!

Things are about to get busy!

— Laura Simmons, President

Membership Meeting

Thursday, March 21
at 7:30 pm

**4800 Dreher Trail North
West Palm Beach FL 33405
at the Multi-Purpose Center**

March Program: The History of Florida Archaeology: Part 1 Shadows and Spirits of the Past

Rudy Pascucci from the Palm Beach Museum of Natural History will present this program on the pre-history of Florida, as uncovered by archaeologists, from its earliest inhabitants through to the formation of the indigenous Native American cultures. The story of who those first people were, how they lived and how Florida's changing environments shaped their lives and cultures will be covered by a review of key archaeological sites and artifacts.

In This Issue

Annual Steak Dinner and Auction

March Birthstone: Aquamarine

Member Highlight: Clara Pfleuger

What Is Herkimer Diamond?

Birthdays & Sunshine News

William Holland Classes

Facebook Advertising

Upcoming Events

TY Park Picnic

Rockhound of the Month

Field Trip to Hogg Mine

Norton Museum

Dinosaur Invasion Exhibit

Massive Rock Sale

Crater of Diamonds Mine

Calendars

Steak Dinner and Auction 2019

Sunday, April 14

10:30 AM Setup *11:30 AM Eat

4800 Dreher Trail North, West Palm Beach, FL 33405
at the Multi-Purpose Center

Also anyone willing to help set up, show up by 10:30.



Mark your calendars and save your money.
The Society will supply the steaks, and water and tea.

Bring with you:

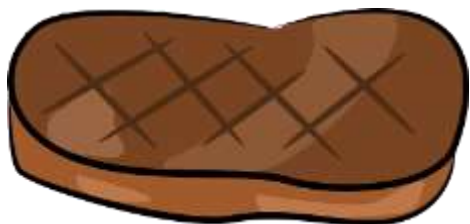
- ◆ Your own table service (plates and silverware),
- ◆ Drinks other than water or tea, and
- ◆ A side dish to share (we suggest salads, vegetables, or dessert).

We will be serving the steaks around noon, so get there
11:30 for a good seat.

FREE for paid-up members; \$10.00 for a guest.

The **auction** will follow after we finish eating.

Lapidary donations are needed! If you have something to donate, please see a member of the Donations Committee (Lo Rain Dudley, Susan Cairl, and Jenny Wright).



Attention: Well done steaks! Only if you want a WELL DONE steak Call Debi 561-568-8736.

MARCH

Birthstone: Aquamarine

Aquamarine has been known since ancient times and has been found in Egyptian tombs. It is the state stone of Colorado. The Colorado state archives mentions both Mt. Antero and White

Mountain as high altitude locations of high quality aquamarine. Recently The Weather Channel featured Colorado prospectors in a reality series on TV. Many of the episodes featured miners looking for aquamarine on Mt. Antero at 14,000 feet. Some of the people featured have gotten into legal trouble with the state for not obtaining a mining permit.



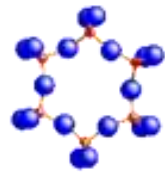
The photo of aquamarine on matrix is by: Rob Lavinsky, iRocks.com – CC-BY-SA-3.0 [CC BY-SA 3.0 (<https://creativecommons.org/licenses/by-sa/3.0/>)].

The cut stone is a stone from Mt. Antero and the photo is by: Steve Green [CC BY-SA 4.0 (<https://creativecommons.org/licenses/by-sa/4.0/>)].



Aquamarine is the mineral beryl with the impurity iron. Beryl is beryllium aluminum silicate with the molecular formula $\text{Be}_3\text{Al}_2\text{Si}_6\text{O}_{18}$. Beryl is known as a cyclosilicate with 6 silicon

atoms arranged in a cyclic structure with the formula $\text{Si}_6\text{O}_{18-12}$. These structures are depicted in several ways as shown below: In the first image the red balls are silicon and the blue are oxygen



(Be, Al are not shown) In the second image the silica units are depicted as tetrahedra joined at the corners. The third image is a group of a number of formula units forming a crystal structure and is oriented so that you can see the cylindrical holes formed in the structure. If a small amount of iron as Fe^{+2} substitutes for aluminum Al^{+3} there needs to be something to balance the charge like a sodium or lithium ion. These ions can fit in the tunnel made by the cyclosilicate. The iron imparts the blue color to the beryl so it becomes what we call aquamarine. Substituting chromium or vanadium gives emerald.



References:

- https://en.wikipedia.org/wiki/Beryl#Aquamarine_and_maxixe
- <https://www.gemsociety.org/article/aquamarine-jewelry-and-gemstone-information/>
- <https://www.denverpost.com/2013/09/07/reality-show-prospecting-meets-reality-in-colorado/>
- <http://www.tgms.org/bills-archive/2017/3/14/color-in-beryl>
- <http://originstones.com/project/aquamarine/>
- <https://www.colorado.gov/pacific/archives/state-gemstone>

-Article compiled by Richard Tracey



Member Highlight: Clara Pfleuger

I first became interested in minerals back in the 80's when I lived in northwest NJ. My neighbors showed me these beautiful crystals they had mined from Herkimer, NY. They were very knowledgeable and it wasn't long before I went on my first dig there. Then I found out I was living 15 minutes from the Fluorescent Mineral Capitol of the World in Franklin, NJ. It wasn't long before my neighbors showed me a spot on a nearby street with "back door" access to an old mind dump. It was not uncommon for people to walk around with black lights and a blanket, looking for less common fluorescent colors. From there, I started looking for local collection sites of anything interesting mineral-wise. A visit to family in western PA had me stopping at interesting looking road cuts and picking up anything that caught my eye.

My friends made jewelry with the Herkimers they collected and I longed to make my own, so the next step was to join the Bergen County Gem and Mineral Society where I was taught to cut cabochons. I also subscribed to some excellent magazines and taught myself bead stringing and some basic wire wrapping. This was sufficient to hold my interest for a few decades, until I sold my home in Jersey and moved to Florida. Yes, I abandoned almost all my mineral collection, but to this day people would be startled if they ever shined a black light on the garden.

Once the transplant was complete, I fulfilled a long time desire by taking Jewelry Fabrication and stone cutting classes at the Boca Raton Museum Art School with Don Dietz. That was where I heard about the GMSPB and their Gem and Mineral Show in November. What I really wanted was affordable access to a shop and our club has what I consider to be first rate facilities. So here I am today, happy to be getting to know others with rocks in their heads too!

Club Purpose

To associate persons of the Palm Beach area of Florida who are interested in earth sciences, to work together as an organization in the gathering, cutting, displaying, and studying of rocks, shells, artifacts, and any kind of scientific objects of interest to the individual and the organization, to promote community interest in these objects.

The Rockhound Copyright 2019

by the Gem & Mineral Society of the Palm Beaches, Inc.

Permission to reprint original material herein not otherwise copyrighted is granted provided that credit is given to both author and publication. Articles not bylines are by the Editor.

FAIR USE NOTICE. This publication may contain copyrighted material the use of which has not been specifically authorized by the copyright owner. We are making such material available in our efforts to advance the educational understanding of the amateur jewelry fabrication and rock collecting hobbies. We believe this constitutes a 'fair use' of any such copyrighted material as provided for in section 107 of the U.S. Copyright Law. If you wish to use material from this publication for commercial or purposes of your own that go beyond 'fair use', you must obtain permission from the copyright owner.

What Is Herkimer Diamond?



Herkimer diamond is a double-terminated quartz crystal discovered within exposed outcrops of dolostone in and around Herkimer County, New York and the Mohawk River Valley. Because the first discovery sites were in the village of Middleville and in the city of Little Falls, respectively, the crystal is also known as a Middleville diamond or a Little Falls diamond.

Many of the New York crystals are known for their extreme clarity, and Wiccan and New Age

belief systems often ascribe specific occult properties and a wide variety of mystical powers to them.

These quartz crystals, which geologists theorize formed extremely slowly in small solution cavities or vugs, have 18 facets (6 sides) and two terminations. There are also larger cavities that are several feet in diameter that are called "pockets". Herkimer diamonds are found clear, cloudy, smoky or even containing a variety of rare impurities. Impurities (rare and general) can include clusters, scepters, fluid inclusions (sometimes incorrectly called enhydros), phantom, and bridge crystals.

A fluid inclusion is a pocket within a crystal containing liquid, usually water, sometimes also methane or oil, and rarely, smaller crystals. A phantom is a crystal containing other visible crystals of the same type, a skeletal crystal contains a series of crystal edge outlines inside the crystal and a hopper crystal has its faces replaced by a step like pattern.

You Can Find It at Crystal Grove Diamond Mine, St. Johnsville, New York

New York is home to Broadway shows, plenty of shopping, Times Square, and the Statue of Liberty, but did you know New York is a great place to mine for gemstones? Crystal Grove Diamond Mine is the place to go to find Herkimer diamonds, beautiful quartz crystals that are fun to mine. These crystals were first discovered in New York, and the perfect clarity of some of these stones makes them very popular with gem hunters.

Address: 161 County Highway 114 Saint Johnsville NY



Read more at <http://www.geologyin.com/2015/11/what-type-of-quartz-is-considered-as.html#kTDHuLq9CUWPIJI.99>



Marta Cruz
Allison Goldberg
Nicholas Leon
Janis Perryman
Winsome Rainford
Dianna Ray
Martin Runcal
Barbara Sampson
Richard Tracey

The secret of staying young is to live honestly,
eat slowly, and lie about your age.

SFMS Federation Week

William Holland
June 9-14

Classes in casting, beading, silverwork, cold connections, wirework, etching, cabochons, and more!

For more information and to register:
www.sfmsworkshops.org

SUNSHINE NEWS



Thanks to Mike Perkins for a new workable table at the shop.

Thanks to those that donated for our raffle at our steak dinner. We still need more!

Thoughts and prayers for Dianna Ray's family.

Facebook Advertising

We're trying to increase attendance at our annual November show. We feel that advertising on Facebook is the way to do that. Our club needs someone who is extremely knowledgeable about Facebook so that we can advertise our show there for 2019. If you're interested, please contact Barbara Ringhiser at bar5678@aol.com.

SHOW COMMITTEE MEETING

Monday, April 1
7:00 PM at the Shop

All members are invited!

U P C O M I N G E V E N T S

March 14-16, Marco Island, FL: **Marco Island Shell Show**. 10 a.m to 4 p.m. at Disseler Hall at the United Church of Marco, 320 N. Barfield Drive, Marco Island, FL 34145. marcoshellclub.com/shell-show.html

March 22-24, Lexington, KY: **Lexington Rock, Gem & Jewelry Show**. Clarion Hotel, 1950 Newtown Pike, Lexington, KY, near Exit 115 off I-75/I-64. Hours: Fri 4-8 PM, Sat 9 AM-6 PM, Sun 11 AM-5 PM. bggamc.homestead.com

March 30-31, West Palm Beach, FL: **Intergalactic Bead Show**. South Florida Fairgrounds, 9067 Southern Blvd., West Palm Beach, FL, 33411 . Hours: Sat 10 AM-5 PM, Sun 10 AM-5 PM. Information and coupon available: beadshows.com/events/west-palm-beach-fl-march-30-31-2019/

April 5-7, Miami, FL: **Best Bead Show Miami**. Classes as well as vendors. DoubleTree Miami Mart West Hall, 711 NW 72nd Ave, Miami, FL 33126. Hours: Fri 11 AM-6 PM, Sat 10 AM-6 PM, Sun 11 AM-5 PM. www.bestbeadshow.com

April 6-7, Miami, FL: **Miami Gem & Mineral Show**. Evelyn Greer Park, 8200 SW 124 Street in the Village of Pinecrest. Sat & Sun 10 AM—5 PM. Exhibits, demonstrations, raffles, vendors, activities for children. Information and a coupon are available at <http://www.mmlg-inc.org>

April 27-28, Memphis, TN: **Memphis Mineral, Fossil, and Jewelry Show**. Agricenter, 7777 Walnut Grove Rd, Memphis, TN. Hours: Sat 9 AM-6 PM, Sun 10 AM-5 PM. Over 50 dealers and exhibitors selling rocks, fossils, minerals, crystals, gemstones, opals, beads, and jewelry. Kids area with gem and fossil dig, geode bowling and Rocks around the Clock. www.theearthwideopen.com

Looking to travel to one of the top gem and mineral shows in the USA? Check out the list here: http://www.geologyin.com/p/with-literally-hundreds-of-places.html?fbclid=IwAR2zclomNwYZ8VKpYZ-hEn_OORxz2gxau0VV3YwuiaDwjzIKxMOx8NOYG0#bcTficb7ksLdJi1q.99

TY PARK Tri-Club Picnic and Rock Swap & Sale

Sunday, April 28, 2019 from 10:00AM-4:00 PM
Pavilion #9 at TY Park (see map)

- ◆ Relax and mingle with members of the Palm Beach, Gold Coast, and Miami clubs
- ◆ Bring a **potluck dish** to share, your **table service** and **drinks** (no glass containers)
- ◆ Bring **items to donate** to Raffles and Bingo, which pay for pavilion
- ◆ Arrive around 9:30-10:30 if you wish to set up a table to sell club related items (no charge), just bring **table** and **chairs**
- ◆ Lunch begins at 11:30
- ◆ Volunteers are needed to help set-up, sell tickets, call bingo, and clean-up.
- ◆ For more info, call Sean Branigan at 954/592-1503 or KC Foster at 561/523-4600.

DIRECTIONS: From I-95 go West on Sheridan Street. Go North (right turn) on North Park Road. The Park entrance will be on the right (east) side. *Park admission is \$1.50 per person.*





ROCKHOUND of the MONTH

Meet Bella and her six babies!

Bella and her five-week-old babies are thriving in the home of Carolee Boyle. They are Flat-Coated Retrievers and come from a long line of highly accomplished furbabies—Obedience, Conformation, Agility, and Hunting titles among them. Bella had four girls and two boys, all now plump, sweet, and sassy.



Do you have a four-legged, feathered, finned, or other little buddy that keeps you company when you're exploring your love of gems and minerals? Send a picture and a little information about them to laurajeaphillips@gmail.com.

Field Trip!

HOGG MINE

LaGrange, Georgia
May 18 & 19

Some of the minerals to be found there include Aquamarine, Aquamarine Beryl, Clear Quartz, Smokey Quartz, Rose Quartz, Star Rose Quartz, and Black Tourmaline.

Please call Shir-Lee Rosenberg at 561-543-1181 to sign up and get more information about cost, car pooling, and hotel.

www.hoggmine.com

Norton Museum of Art

The Norton Museum in West Palm Beach is newly renovated, and has many items on display that may be of interest, including antique, vintage, and Chinese jewelry.



Sunday 11 am—5 pm
Monday 10 am—5 pm
Tuesday 10 am—5 pm
Wednesday CLOSED
Thursday 10 am—5 pm
Friday 10 am—10 pm
Saturday 10 am—5 pm

General Admission \$18
Seniors (60+) \$15
Students \$5

Children 12 & under, Teachers, Military FREE
FREE TO ALL ON FRIDAYS and SATURDAYS

www.norton.org

South Florida Science Center

DINOSAUR INVASION!



Dinosaurs are returning to the South Florida Science Center, even bigger than before! Journey back millions of years and experience the largest exhibit we've ever had during this indoor and outdoor expedition. See how you size up against life-size animatronic Triceratops, Raptors, Tyrannosaurus Rex, and even the giant Spinosaurus! Click [here](#) to view the exhibit video.

With a scale unmatched in animatronic dinosaur exhibitions, this exhibition features some of the world's most unique and recently discovered dinosaurs. While experiencing scientifically accurate and exhilarating dinosaurs, visitors to Dinosaur Invasion will make a trek through the largest exhibit the South Florida Science Center has ever hosted. Visit every continent in order to discover what dinosaurs lived there and how they arrived. Along the way, learn about tectonic plates, geological formations, the latest paleontological research, and interact with actual fossils and a dig pit.

Until 4/21/19

MASSIVE ROCK SALE

Saturday, March 30 * 8 am — 2 pm

2251 SE Montauk St, Port Saint Lucie, FL 34952

TWO TONS! Too much to list. Huge Fluorite Collection, Minerals, Fossils, Petrified Wood, Gems, Slab Stones, Cabbing Rough, Faceting Rough, Geodes, Large Agatized Tampa Bay Corals, Agates, Polished Cabs, Opal Rough, Crystals, Healing Stones, Chakra Stones, and Metaphysical Crystals.

CASH ONLY !!!

For more information: Ron Bass 772/224-0362 or rtbass1213@gmail.com

THE ONLY DIAMOND MINE IN THE WORLD WHERE YOU CAN BE THE MINER



If you have a strong interest in gemstones you would probably love to have an opportunity to mine for diamonds yourself. Here's where you can go.

CRATER OF DIAMONDS STATE PARK

For a fee of a few dollars you can enter the mine, search all day and keep any diamonds that you find. In addition to diamonds, you might find one of the many colorful gemstones that occur naturally there. These include: amethyst, agate, jasper, garnet, peridot, hematite and many others. Crater of Diamonds State Park is a 911-acre (369 ha) Arkansas state park in Pike County, Arkansas, in the United States.

The **Crater of Diamonds** volcanic pipe is part of a 95-million-year-old eroded volcano. The deeply sourced lamproite magma, from the upper mantle, brought the diamonds to the surface. The diamonds had crystallized in the cratonic root of the continent long before and were sampled by the magma as it rose to the surface.

Arkansas's Crater of Diamonds State Park is the **only** diamond-producing site in the world where the **visitors can search for diamonds**. And the policy here is "finders, keepers," meaning the diamonds you find are yours to keep.

To hunt for diamonds you will search atop a 37 1/2-acre plowed field, the eroded surface of an ancient, gem-bearing volcanic crater. The park staff provides **free identification** and certification of diamonds found there.

Park visitors find **more than 600 diamonds** each year of all colors and grades. Over 29,000 diamonds have been found in the crater since it became a state park. Visitors may keep any gemstone they find regardless of its value.

In addition to diamonds, visitors may find **semi-precious gems** such as amethyst, agate, and jasper or approximately 40 other **minerals** such as garnet, phlogopite, quartz, baryte, and calcite.

Tickets/Fees 8\$ for entire day.

Diamond mining tools rent for 20\$ for entire day.

[Here](#) you can Read everything about it and [book online](#).

Read more at <http://www.geologyin.com/2016/08/the-only-diamond-mine-in-world-where.html#FwTJp7FC1mb8h6gO.99>

SHOP TALK

Open Shop Schedule



Open shop is available for members use only, but visitors are welcome to stop by during open shop hours. Open shop fees are \$5.00 for the first 3 hours and \$7.00 for time over three hours.

Important! Members must complete a 6 class Certification Class before using the cabbing equipment. This class runs for six consecutive weeks for 3 hours each week to provide safety instructions and cabbing techniques. If you received training elsewhere, you will still need to demonstrate your proficiency before using shop equipment. For information on cabbing certification please call Susan Cairl @ 561-293-1298.

Open Shop Hours:

Mondays 10:30am - 5:00pm, Samantha Lazzaro, Shop Steward - 631-764-6556
Tuesdays Evenings by Appointment - Laura Simmons, Shop Steward - 407-234-0444
Thursdays 12:30pm - 3:30pm, Dennis Rietwyk, Shop Steward - 561-255-0292
Fridays 6:00pm - 9:00pm, Susan Cairl, Shop Steward - 561-293-1298

“Stuff Happens” so please call first to verify the shop will be open as scheduled. If the assigned shop steward cannot be reached, call Susan Cairl, Head Steward, to confirm.

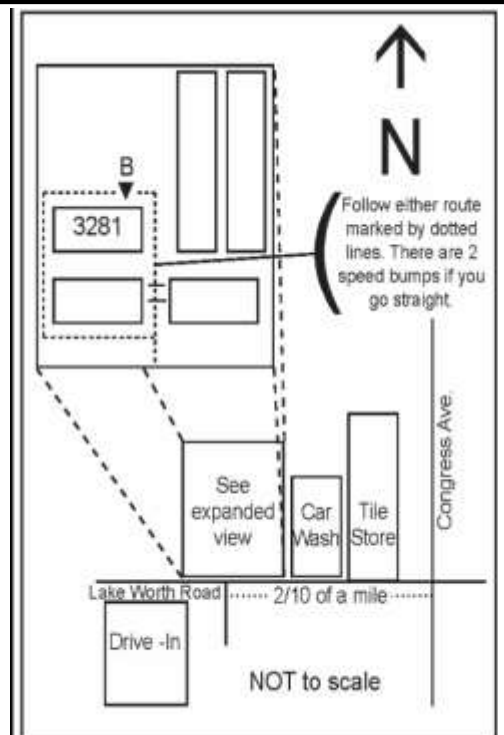
Shop Report

Open shop is available for lapidary, metal work, enameling, fused glass, classes and to use the library. You must be certified to use the kiln! For kiln certification and classes, please call Samantha Lazzaro.

At the present time, kiln use is limited to Monday Open Shop Hours. For beginning silversmith classes, please call Laura Simmons. Additional classes will be announced as they become available. When visiting the shop please know:

- ◆ You will be asked to sign a one-time liability waiver and be given a copy of the shop rules
- ◆ Always sign in and out of the log book and complete the information on the sign in sheet
- ◆ Drinks and food are permitted in the outer room only
- ◆ There is no fee to use the library or reference videos available in the shop

The street address of the shop is:
3281 Lake Worth Road, Suite B, Lake Worth, FL 33461



MARCH

Sun	Mon	Tue	Wed	Thu	Fri	Sat
					1 Open Shop** 6-9 PM General Work Susan 561/293-1298	2
3	4 Open Shop** 10:30AM - 5 PM General Work Lo Rain 561/827-5793	5	6 BOARD MEETING 7:30 PM	7 Open Shop** 12:30-3:30 PM General Work Dennis 561/255-0292	8 Open Shop** 6-9 PM General Work Susan 561/293-1298	9
10	11 Open Shop** 10:30AM - 5 PM General Work Samantha 561/372-2359	12	13	14 Open Shop** 12:30-3:30 PM General Work Dennis MARCO ISLAND SHELL SHOW	15 Open Shop** 6-9 PM General Work Susan 561/293-1298 MARCO ISLAND SHELL SHOW	16 MARCO ISLAND SHELL SHOW
17	18 Open Shop** 10:30AM - 5 PM General Work Samantha 561/372-2359	19	20	21 Open Shop** 12:30-3:30 PM MEMBERSHIP MEETING 7:30 PM	22 Open Shop** 6-9 PM General Work Susan 561/293-1298	23
24	25 Open Shop** 10:30AM - 5 PM General Work Samantha 561/372-2359	26	27	28 Open Shop** 12:30-3:30 PM General Work Dennis 561/255-0292	29 Open Shop** 6-9 PM General Work Susan 561/293-1298	30 ROCK SALE page 10 INTER-GALACTIC BEAD SHOW
31						

CALL BEFORE GOING TO OPEN SHOP!!

Always call the shop steward before going to the shop.
 Open shop sessions may be cancelled or changed due to scheduling conflicts.
 If the assigned shop steward cannot be reached, call Susan Cairl, Head Shop Steward, to arrange for open shop.



Sun	Mon	Tue	Wed	Thu	Fri	Sat
	1 SHOW COMMITTEE MEETING 7:00 PM	2	3 BOARD MEETING 7:30 PM	4 Open Shop** 12:30-3:30 PM General Work Dennis 561/255-0292	5 Open Shop** 6-9 PM General Work BEST BEAD SHOW MIAMI	6 MIAMI GEM & MINERAL SHOW BEST BEAD SHOW MIAMI
7 MIAMI GEM & MINERAL SHOW BEST BEAD SHOW MIAMI	8 Open Shop** 10:30AM - 5 PM General Work Samantha 561/372-2359	9	10	11 Open Shop** 12:30-3:30 PM General Work Dennis 561/255-0292	12 Open Shop** 6-9 PM General Work Susan 561/293-1298	13
14 STEAK DINNER 10:30 AM	15 Open Shop** 10:30AM - 5 PM General Work Samantha 561/372-2359	16	17	18 Open Shop** 12:30-3:30 PM MEMBERSHIP MEETING 7:30 PM	19 Open Shop** 6-9 PM General Work Susan 561/293-1298	20
21	22 Open Shop** 10:30AM - 5 PM General Work Samantha 561/372-2359	23	24	25 Open Shop** 12:30-3:30 PM General Work Dennis 561/255-0292	26 Open Shop** 6-9 PM General Work Susan 561/293-1298	27
28 TY PARK PICNIC	29 Open Shop** 10:30AM - 5 PM General Work Samantha 561/372-2359	30				

CALL BEFORE GOING TO OPEN SHOP!!

Always call the shop steward before going to the shop.
 Open shop sessions may be cancelled or changed due to scheduling conflicts.
 If the assigned shop steward cannot be reached, call Susan Cairl, Head Shop Steward, to arrange for open shop.

AVAILABLE CLASSES

CLASS	INSTRUCTOR	COST	DATE/TIME/NOTES
◇ Introduction to Chainmail ◇ How to Use the Jumpringer ◇ Introduction to Metalsmithing ◇ Viking Wire Weave	Laura Simmons 407/234-0444	\$30 + \$10 materials fee \$10 + \$5 materials fee \$50 + \$30 materials (copper) or \$60 materials (silver) \$30 + \$15 fee	Contact instructor to arrange.
Cabochon sessions Six 3-hr sessions	Susan Cairl 561/293-1298	\$75 + \$20 materials fee	Contact instructor to arrange.
Cold Connections Class Series: ◇ Explosion Pendant ◇ Fold Forming Bracelet w/Beveled Stone Setting ◇ Scrapbook Bracelet (rivets) ◇ Metal Etching & Air Chasing Bracelet ◇ 3D Pendant w/Druzy Stone Slice NEW!	Arlene Lazzaro 516/810-3495	\$40 + \$35 materials fee \$40 + \$35 materials fee \$40 + \$35 materials fee \$40 + \$40 materials fee \$40 + \$40 materials fee	Contact instructor to arrange.
Enameling	Samantha Lazzaro 561/372-2359	\$40 + \$50 materials fee	Contact instructor to arrange.
Flat Lap	Susan Cairl 561/293-1298	\$40 + \$10 supplies fee	Contact instructor to arrange.
Gem Tree	Dianna Ray 561/707-6753	TBD	Contact instructor to arrange.
Metalsmithing: ◇ Alien Prong Ring	Arlene Lazzaro 516/810-3495	\$40 + \$15 materials fee	Contact instructor to arrange.
Wire Fan Bracelet Class	Debi Kachman 561/568-8736	\$30 + \$20-50 materials fee (depending on metal) OR supply list can be provided	Contact instructor to arrange.
Wire Sculpture Class	Debi Kachman 561/568-8736	\$30 + \$20-50 materials fee (depending on metal) OR supply list can be provided	Contact instructor to arrange.

The Rockhound

Official publication of the Gem & Mineral Society of the Palm Beaches, Inc.

MEMBERSHIP DUES

Junior Membership—\$10.00
(Under age 18)

Single Membership—\$20.00
(Over age 18)

Family Membership—\$30.00
(Includes 2 adults and children under age
18 in a single household)

*Membership expires on December 31st
each year and is due by the end of
February of the new year.*

To renew your membership, make your
check or money order to:

Gem & Mineral Society of the Palm
Beaches, Inc. and mail to:

Membership Coordinator
Gem & Mineral Society
P.O. Box 18095
West Palm Beach, FL 33416-8095

NAME TAGS

Available from:
Ace Marking Devices (\$12.00)
3308 S. Dixie Hwy.
West Palm Beach, FL 33405
561/833-4073

SHOP FEES

Up to 3 hours shop time - \$5
Over 3 hours shop time - \$7

SEE CALENDAR FOR OPEN SHOPS

SHOP STEWARDS

Head Shop Steward:
Susan Cairl 561/293-1298

Laura Simmons 407/234-0444
Dennis Rietwyk 561/255-0292
Samantha Lazzaro 561/372-2359

Shop Phone:
561/585-2080

2018 OFFICERS

President*	Laura Simmons	407/234-0444
1st Vice President*	Dianna Ray	561/707-6753
2nd Vice President*	Barbara Ringhiser	561/379-4307
Secretary*	Clara Pflueger	201/566-6492
Treasurer*	Jenny Wright	561/634-1427

2018 DIRECTORS

Head Shop Steward*	Susan Cairl	561/293-1298
Membership*	David Taylor	561/644-1888
Newsletter Editor*	Laura Phillips	561/523-3594
Member-at-Large*	Lo Rain Dudley	561/827-5793
Show Chairman*	Walter Triche	561/628-1031
Webmaster*	Richard Tracey	561/318-6891

COMMITTEE CHAIRPEOPLE

Hostess	Samantha Lazzaro	561/372-2359
Jr. Rockhound Program	Mitchell Turk	561/506-4655
Librarian	Shop Steward on Duty	
Programs	Barbara Ringhiser	561/379-4307
Raffle Coordinator	Lo Rain Dudley	561/827-5793
Refreshments	Arlene Lazzaro	516/810-3495
Sunshine Committee	Lo Rain Dudley	561/827-5793
Social Events	Debi Kachman	561/793-6777
Webmaster	Richard Tracey	561/318-6891

*Denotes a Voting Member of the Executive Committee.

WEBSITE

www.gemandmineralsociety.org or www.gmspb.org

Club Email Addresses

membership@gmspb.org
newsletter@gmspb.org
president@gmspb.org
show@gmspb.org
vendorinfo@gmspb.org
webmaster@gmspb.org

Link to our smile.amazon.com account:
<http://smile.amazon.com/ch/59-6196330>

The Gem & Mineral Society of the Palm Beaches, Inc. is a 501 (c) (3) corporation and a member of the Eastern and Southeastern Federations of Mineral and Lapidary Societies, and is affiliated with the American Federation of Mineralogical Societies. Monthly meetings are held on the third Thursday of the month except for December, which is held on the second Thursday. Meetings start at 7:30 PM at the former Garden Club building (across from the Science Center), 4800 Dreher Trail North, West Palm Beach, FL 33405.

Send comments or submissions to newsletter@gemandmineralsociety.org