



The Rockhound

Official Publication of the Gem & Mineral Society of the Palm Beaches, Inc.

www.gemandmineralsociety.org
December 2018 Volume 52 Issue 3

President's Message

Season's Greetings Rockhounds,

November, as always, was a busy month for a great many of our members. Two weeks ago we, I mean you, once again performed the magic act we call the Gem, Mineral, Jewelry, and Fossil Show. Then it was the big run up to those remarkable Thanksgiving meals prepared by families last week. Today, it was the Miami Mineralogical & Lapidary Guild's Semi-Annual Show and Sale also attended by some of our members. Lots of busy people.

Speaking of which I would like to thank all of you who made our gem show happen. And we should give Walt Triche, Show Chairman a shout out for coordinating all the moving parts that made it a success. Go Walter!

Our monthly membership meeting this month will be held at Science Museum Multi-Purpose Center on December 11th at 7:30 pm. At this meeting we will vote on the slate of nominated Officers for the 2019 edition of the Gem and Mineral Society of the Palm Beaches! The elected officers will be installed at the Holiday Banquet to be held on December 15th at the Scottish Rite Lodge. Information on the banquet can be found in this newsletter and on the website calendar. I hope to see all of you there. Happy Holidays.

— Lee Miller, President

Official Announcement of Voting

In accordance with GMSPB By-laws, this is hereby an official announcement that **Voting for our 2019 Officers** will occur at the December General Meeting, to be held on Tuesday, December 11, at the South Florida Science Center and Aquarium's Multi Purpose Center, 4801 Dreher Trail N, West Palm Beach, FL 33405, at 7:30

Membership Meeting

Tuesday, December 11

at 7:30 pm

**4800 Dreher Trail North
West Palm Beach FL 33405
at the Multi-Purpose Center**

December Program:
Election of 2019 Officers



We'll have our annual election of officers followed by refreshments and socializing.

Slate of Officers for 2019

Each year, in early December, our club votes in Officers for the next year. This process includes a slate, which is developed by our Nominating Committee. In addition to the slate, nominations will be accepted from the floor at the December meeting, prior to the voting. We are pleased to present this year's slate of candidates, as follows:

President: Laura Simmons

First Vice President: Dianna Ray

Second Vice President: Barbara Ringhiser

Secretary: Clara Pflueger

Treasurer: Jenny Wright (incumbent)

Please remember that Elections will be held on Tuesday, December 11th, 7:30 PM, at the Science Center's Multi Purpose Center. Installation of Officers will take place at our Holiday Banquet, on Saturday, December 15th.

DECEMBER

December has three birthstones: Tanzanite, Turquoise and Zircon. While the colors vary on these stones they are best known as the blue varieties. While zircon is the oldest gem on earth and tanzanite is one of the most recently discovered, turquoise is one of the first to be mined and used for jewelry.

Birthstone: Tanzanite



Photo by Rob Lavinsky, IRocks.com

Tanzanite was discovered in the late 1960's in Tanzania. Tanzanite was first mined by Manuel d'Souza who initially thought he was mining sapphires. His main distributor was Tiffany & Co. Tanzanite is the mineral zoisite which is a calcium aluminum hydroxyl sorosilicate

that contains an impurity of the element vanadium.

Tiffany & Co. named the gem tanzanite for public appeal reasons. Tanzanite can be either trichroic or dichroic depending on whether or not it has been heat treated. The heat treatment can be natural or done by humans and eliminates any brown colors that may be present. Trichroic means showing three colors depending on the angle it is viewed at and dichroic means two colors.



Birthstone: Turquoise



Turquoise is probably best known to us as being from the Southwest and associated with the Native Americans but has been known since ancient times. King Tut's death mask was inlaid with turquoise. There is an interesting website

by a company called T. SKIES (<http://tskies.com>) which sells turquoise jewelry but all of the offerings are by Native Americans. The website offers



bios of the artists as well as information on the mines where the material comes from. Turquoise is a hydrated phosphate of copper and aluminum with the chemical formula $CuAl_6(PO_4)_4(OH)_8 \cdot 4H_2O$. The copper gives turquoise its blue color. The hardness is 5-6 on the mohs scale which gives it about the same hardness as window glass.

Birthstone: Zircon



Photo by Don Guennie
The World of Gems

Zircon gemstones occur in colors ranging from colorless to pink to brown to green and blue. The blue stones are the most coveted. Most zircon gemstones are mined in Southeast Asia, the middle East and Northeast Africa. In the early 1900's zircon was touted as a diamond

substitute which gave zircon a bad name. Even today many people confuse zircon with cubic zirconia. Zircon is zirconium silicate and natural while cubic zirconia is zirconium dioxide and is man-made. Zircon is bi-refrangent so it shows differences in color depending on the viewing angle. Most zircons are the size of grains of sand and can be found on many beaches. They, along with other heavy metal minerals are the dark to black grains that often can be found in layers if you dig a trench in the sand on the beach. Zircon is actually mined in Florida near the Jacksonville area – but only for the mineral not the gemstone.



Photo by Rob Lavinsky
IRocks.com

References:

- <https://www.americangemsociety.org/page/birthstones>
- <https://en.wikipedia.org/wiki/Tanzanite>
- <https://en.wikipedia.org/wiki/Turquoise>
- <https://geology.com/minerals/turquoise.shtml>
- <https://en.wikipedia.org/wiki/Zircon>
- https://www.minerals.net/gemstone/zircon_gemstone.aspx
- <https://www.minerals.net/mineral/zircon.aspx>
- <https://geology.com/minerals/zircon.shtml>
- <https://www.gemselect.com/gem-info/zircon/zircon-info.php>

-Article compiled by Richard Tracey

52nd Annual Gem and Mineral Show

November 17 & 18, 2018



**Scholarship Fund Drawing
Hourly Door Prizes
Raffle
Display Case Competition
Demonstrations
And tons of fun for everyone!**

52nd Annual Gem and Mineral Show (continued)



Photographic credits to Lorna Hayes and Matt Tinker.

See you next year!

DISPLAY CASE COMPETITION

1st: Arlene Lazzaro

2nd: Matt Tinker

3rd: John Speier

Members Choice:
Shir-lee Rosenberg

HOLIDAY BANQUET

Saturday, December 15 6:00 PM

Scottish Rite

2000 N. D St. Lake Worth, FL 33460

Catered by Too Jays

\$10 for members who volunteer 4 hours or more at the show

\$20 for non-volunteers and guests

80 person maximum



GIFT EXCHANGE

\$10 value - lapidary related

Mark for Man, Woman, or Either

CENTERPIECE CONTEST

Prizes for 1st, 2nd & 3rd places

Sign up with Jenny Wright

(561) 634-1427



RSVP

Reserve your place!

Dianna Ray (561) 707-6753

Call in the evening or

Text anytime



Member Highlight: Laura Simmons

This month, we'd like to Highlight our Presidential Nominee, Laura Simmons. Laura served as our Club President in 2016 and 2017, and has been asked by the Nominating Committee to reprise the role in 2019. Unfortunately, Laura has not been able to attend many Club activities since April, 2018, when changing work schedules began to interfere... but that has changed again, and she's able to be back!

Laura is a Florida native, born and raised in the Sarasota/Venice area. Her education and interests vary greatly. She has several degrees, including a Bachelors of Science in Business Administration from the University of Central Florida, and a Masters in Business and Organizational Security Management from Webster University. She also has a (second) Associates Degree in Horticulture and Landscape Management, for something completely different! Besides Gems and Minerals, her hobbies include metalworking, sewing, leather working, and fiber arts. Basically, she doesn't like to sit still!

So, if you need to know what plant that is, or need some help with your crochet, you know who to ask! Thanks to Laura for her leadership in the past, and going into the future!

Club Purpose

To associate persons of the Palm Beach area of Florida who are interested in earth sciences, to work together as an organization in the gathering, cutting, displaying, and studying of rocks, shells, artifacts, and any kind of scientific objects of interest to the individual and the organization, to promote community interest in these objects.

FAIR USE NOTICE. This publication may contain copyrighted material the use of which has not been specifically authorized by the copyright owner. We are making such material available in our efforts to advance the educational understanding of the amateur jewelry fabrication and rock collecting hobbies. We believe this constitutes a 'fair use' of any such copyrighted material as provided for in section 107 of the U.S. Copyright Law. If you wish to use material from this publication for commercial or purposes of your own that go beyond 'fair use', you must obtain permission from the copyright owner.

The Rockhound Copyright 2018

by the Gem & Mineral Society of the Palm Beaches, Inc. Permission to reprint original material herein not otherwise copyrighted is granted provided that credit is given to both author and publication. Articles not bylines are by the Editor.



*Katherine Behler * Nancy Critics
Larry Deaton * Eric Essery
Gale Langford * Paul Perryman
Laura Phillips * Christina Ray
Eileen Reingold * Angelena Slone
Josey Stamper * Jen Ursillo
Patricia Varnon*



Your birthday is the start of another year with more surprise and joy around every corner. Unless you take the corner too quickly...in that case you might just get cake in your face.

Lucky bug eluded eternal entombment in 50 million-year-old amber

by Will Dunham in [SCIENCE NEWS July 14, 2016](#)

WASHINGTON (Reuters) - A chunk of amber found along the Baltic Sea in Russia provides evidence roughly 50 million years old of an extremely fortunate bug.

An Oregon State University scientist on Thursday described a remarkable piece of amber -fossilized tree sap - containing a mushroom, a strand of mammalian hair and the recently shed exoskeleton of an insect that got away from the oozing sticky stuff in the nick of time, escaping eternal entombment.

The tiny bug looks similar to insects alive today known as walking sticks, whose stick-like appearance provides camouflage that helps keep them safe from hungry birds and other predators.

The amber memorialized a little scene that unfolded in an ancient subtropical forest of evergreen trees roughly 15 million years after the dinosaurs went extinct and mammals began to assume their new position as Earth's dominant land animals.

"The mushroom was growing at the base of a tree," Oregon State entomologist and amber expert George Poinar said. "The insect was exploring the mushroom and getting ready to feed on it. A rodent came along, bit off the stem of the mushroom at the same time some resin from the tree was flowing down toward the mushroom."

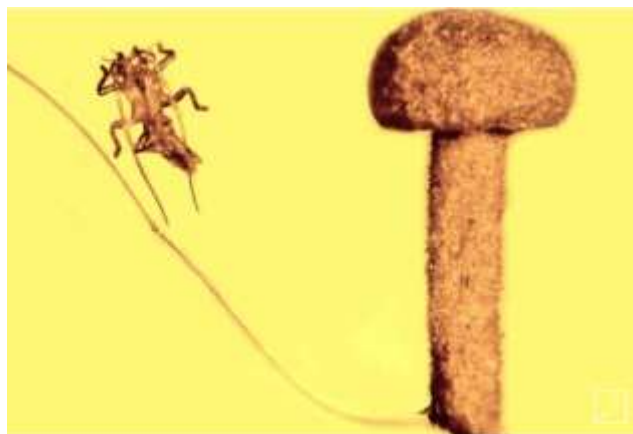
"The resin caught the feet of the insect that was probably ready to molt and decided that this was a good time to leave its skin and flee. So now we have the rodent hair and the skin of the insect together with the prize mushroom in amber," he added. "Gourmet chefs should not get too excited about this find since the mushroom is way too small for an omelet."

Numerous creatures been found entombed in amber including insects, lizards, amphibians, mammals and birds, as well as plants including flowers. They are sometimes beautifully preserved and offer unique insight into ancient animals and plants.

"Finding insects and plants together creates a mini-event and shows interactions of the past that we couldn't determine by finding them separately," Poinar said.

The insect was the type that would have shed its exoskeleton over and over before becoming an adult and likely lived just a couple months. It is clear that the exoskeleton trapped in the amber had been recently shed because it contains fine strands that would not longer be present if it had molted a significant amount of time before being overtaken by the sap.

The research was published in the journal *Fungal Biology*.



The exoskeleton or skin of a tiny insect, similar to a "walking stick" is shown beside a mushroom entombed in amber fossil which is dated from about 50 million years ago. Photo courtesy George Poinar, Jr/Oregon State University/Handout via REUTERS

\$50 Million Pink Diamond

At the November meeting Keith Klein announced the news about a 18.96 carat pink diamond that sold for \$50 million at a Christie's auction in Geneva Switzerland. The diamond was known as the pink legacy diamond. This is a record price/carat for a



diamond. To put the price in perspective this diamond weighs 3.8 grams and a penny weighs 3.1 grams.

Flawless pink diamonds are very rare and most of them weigh 0.1 carat or less. The pink legacy diamond has no other coloring which is also rare. Only 2% of all

diamonds are pink and fewer than 10% of the pink diamonds are of this quality.

The attached photo is actually of the Graff Pink Diamond at 24.78 carats. The photo is by: Diamondhistorygirl [CC BY-SA 4.0 (<https://creativecommons.org/licenses/by-sa/4.0/>)], from Wikimedia Commons.

To view photos of the legacy pink diamond please visit the Christie's site at:

<https://www.christies.com/features/The-Pink-Legacy-diamond-9398-3.aspx>

Other articles this story is based on are:

<https://www.cnn.com/style/article/christies-pink-legacy-diamond-scli-intl/index.html>

<http://fortune.com/2018/11/13/christies-pink-legacy-diamond-sale-price/>

<https://www.foxnews.com/science/pink-legacy-diamond-sells-for-whopping-50-million-its-pretty-much-unreal>



Diamond Dan's Holiday Special

The World's Best Bathroom Book for Mineral Collectors Ever Written, No. 1
The World's Best Bathroom Book for Mineral Collectors Ever Written, No. 2
The World of Minerals & Crystals
Fluorite: The Rainbow Mineral
Diamond Dan's Mineralogical Dictionary
Crystals & Crystal Forms

All 6 books for the very low price of
\$24.95 (postage paid)

Call (585-278-3047), email (powellpublicationsgroup@gmail.com), or visit our website to place your order.

This is the perfect gift for all of your mineral-collecting relatives and friends!

www.diamonddanpublications.net



TIME TO RENEW!

It's time to renew your membership for 2019!

Membership forms are available in the the December newsletter, and also at club meetings.

Online membership signup and renewal is now available on the club website under the About menu.



www.gmspb.org



ROCKHOUND of the MONTH

And now for
something
completely
different—
SCORPIONS!

Look at Mama Scorpion and
all her little babies!



These little cuties are
constant companions to our
1st Vice President, Barbara
Ringhiser. The babies are
growing up now!

Do you have a four-legged, feathered, finned, or other little buddy that keeps you company when you're exploring your love of gems and minerals? Send a picture and a little information about them to laura@ahphillips.com.

U P C O M I N G E V E N T S

Tuesday, December 11, 7:30 pm, West Palm Beach: **GMSPB Membership Meeting and Election of officers.**

Saturday, December 15, 6:00 pm, Lake Worth: **GMSPB Holiday Banquet.** See details on Page 8.

January 11-13, 2019, Largo FL: **Pinellas Geological Society Forty-Third Annual Gem, Jewelry and Mineral Show and Sale.** Friday and Saturday 10 AM to 5 PM Sunday Noon to 5 PM Central Park Performing Arts Center Parkside Room 105 Central Park Drive Largo, Florida Turn south off East Bay Drive just one block east of Seminole Blvd. Free admission. Donation \$2.00 for hourly drawing. Silent Auction every hour.

Unique jewelry has fascinated mankind since cave days. Today that still holds true as men and women create wonderful gem and mineral ornaments from nature's abundant rocks and minerals. Members of the Gem and Mineral Clubs in our area gather together monthly to share their hobby. The members of the Pinellas Geological Society and other local Gem and Mineral Clubs will be showing their cut gems, silver and gold jewelry, wire wrap, beading, cabachons, and collections of rocks and minerals for your viewing pleasure and purchase. This show is for everyone of all ages (free rock bags for children) who are fascinated by and enjoy seeing and learning more about nature's beauty in gems, rocks and minerals. Contact person: Leona Feldhausen , Co-Chairperson; (727) 709-3236

February 16th and 17th 2019, Vero Beach, FL: **Treasure Coast Rock and Gem Society 43rd Annual Show.** Vero Beach Community Center 2266 14th Ave, Vero Beach, FL 32960. Downtown.

TY PARK Tri-Club Picnic and Rock Swap & Sale

Sunday, January 27, 2019 from 10:00AM-4:00 PM
Pavilion #9 at TY Park (see map)

- ◆ Relax and mingle with members of the Palm Beach, Gold Coast, and Miami clubs
- ◆ Bring a **potluck dish** to share, your **table service** and **drinks** (no glass containers)
- ◆ Bring **items to donate** to Raffles and Bingo, which pay for pavilion
- ◆ Arrive around 9:30-10:30 if you wish to set up a table to sell club related items (no charge), just bring **table** and **chairs**
- ◆ Lunch begins at 11:30
- ◆ Volunteers are needed to help set-up, sell tickets, call bingo, and clean-up.
- ◆ For more info, call Sean Branigan at 954/592-1503 or KC Foster at 561/523-4600.

DIRECTIONS: From I-95 go West on Sheridan Street. Go North (right turn) on North Park Road. The Park entrance will be on the right (east) side. *Park admission is \$1.50 per person.*



Who Knows the Most?

Here's a challenge for your brain. How many of these questions can you answer? How quickly can you answer them? If you are in a mineral club, make it into a contest. Remember that the person who answers all the questions first may not have all the answers right! Hint: Some of the answers can be found in this issue of Mini Miners Monthly. Accuracy counts. Here we go...

Azurite can turn into _____ when it is exposed to air.

- a. Cuprite b. Magnetite c. Malachite d. Mordenite

Two of these minerals are magnetic. Two are not. Which two are magnetic?

- a. Hematite b. Magnetite c. Lodestone d. Limonite

A mineral that occurs in only one color has a special name. What do mineralogists call a mineral, like azurite or malachite, that are found in only one color?

- a. Polychromatic b. Aquatic c. Specific Gravity d. Monochromatic

Name two minerals that are copper ores.

- a. Calcite b. Malachite c. Galena d. Azurite

There are two minerals that have the exact same chemical formula, but they crystallize in two different crystal systems. What are the two minerals?

- a. Calcite b. Azurite c. Malachite d. Aragonite

Which one of these minerals is harder than 6 on the mineral scale of hardness?

- a. Gypsum b. Topaz c. Orthoclase Feldspar d. Calcite

Which one of these minerals is softer than 6 on the mineral scale of hardness?

- a. Corundum b. Quartz c. Fluorite d. Orthoclase Feldspar

Name the mineral that can burn in a match flame and, when it does, it smells like rotten eggs?

- a. Pyrite b. Gypsum c. Chalcopryrite d. Sulfur

Reprinted with permission from Mini Miners Monthly, Vol. 10 No. 11, November 2018.

www.diamonddanpublications.net

Mineral Jokes

What do you get when you drop a piano down a mineshaft?
A Flat Miner (get it????!!)

Mr. Sapphire married Miss Ruby and they moved into their first home. What was it called?

A: A corunduminium. (Thanks to Jim Brace-Thompson for this “gem”)

Diamond Dan was very sick one day. He just didn't want to eat anything at all. Why?

Because he lost his ... wait for it ...wait for it ... his APATITE!

Where were the calcite crystals taking a nap?

A: In the bedrock, of course!

Did you hear what Corundum Carl gave his wife for Valentine's Day?

You guessed it, a dozen Barite Roses!

Where do geologists like to relax?

In a rocking chair



Asbestos Andy plays with matches.



An afternoon with Diamond Dan on the golf course.

Reprinted with permission from Mini Miners Monthly, Vol. 10 No. 11, November 2018.
www.diamonddanpublications.net

Gem and Mineral Society of the Palm Beaches, Inc. Membership Application

Check ONE Only: *

- \$20.00 - Individual Membership - Any single adult 18 years of age or older
 \$30.00 - Family Membership - Two adults, all minor children & students up to age 21 in household.
 \$10.00 - Junior Membership - A child under the age of 18 joining with the permission of a parent or guardian.

Check ONE Only:

- New Membership
 Renewal Membership

Please provide us with your name(s), address, telephone number and email address (if you have one). We need a mailing address and telephone number for contact purposes. Any information provided will be kept private and secure and will not be shared with any outside persons, organizations or entities. Members information may be published in the annual Society Roster for the sole distribution to other Society members.

NAME: _____ Month & Day of Birth: _____

SPOUSE OR PARTNER: _____ Month & Day of Birth: _____

ADDRESS _____

CITY, STATE ZIP _____

HOME PHONE _____ CELL PHONE _____

SPOUSE'S PHONE _____ CELL PHONE _____

EMAIL ADDRESS _____

SPOUSE'S EMAIL _____

Family Membership additional names (year of birth required for children under the age of 18)

CHILD'S NAME _____ mm/dd/yyyy of Birth _____

CHILD'S NAME _____ mm/dd/yyyy of Birth _____

CHILD'S NAME _____ mm/dd/yyyy of Birth _____

CHILD'S NAME _____ mm/dd/yyyy of Birth _____

(Minor's Information required so that we may include them for Eastern Federation Dues and third-party liability insurance).

By signing below, I hereby submit my application for membership into the Gem and Mineral Society of the Palm Beaches. Signature _____ Date: _____

Amt. Enclosed: _____	
<input type="checkbox"/> Cash	<input type="checkbox"/> Check
Check # _____	

SHOP TALK

Open Shop Schedule

Open shop is available for members use only, but visitors are welcome to stop by during open shop hours. Open shop fees are \$5.00 for the first 3 hours and \$7.00 for time over three hours.



Important! Members must complete a 6 class Certification Class before using the cabbing equipment. This class runs for six consecutive weeks for 3 hours each week to provide safety instructions and cabbing techniques. If you received training elsewhere, you will still need to demonstrate your proficiency before using shop equipment. For information on cabbing certification please call Susan Cairl @ 561-293-1298.

Open Shop Hours:

Mondays 10:30am - 5:00pm, Samantha Lazzaro, Shop Steward - 631-764-6556
Tuesdays Evenings by Appointment - Laura Simmons, Shop Steward - 407-234-0444
Thursdays 12:30pm - 3:30pm, Dennis Rietwyk, Shop Steward - 561-255-0292
Fridays 6:00pm - 9:00pm, Susan Cairl, Shop Steward - 561-293-1298

“Stuff Happens” so please call first to verify the shop will be open as scheduled. If the assigned shop steward cannot be reached, call Susan Cairl, Head Steward, to confirm.

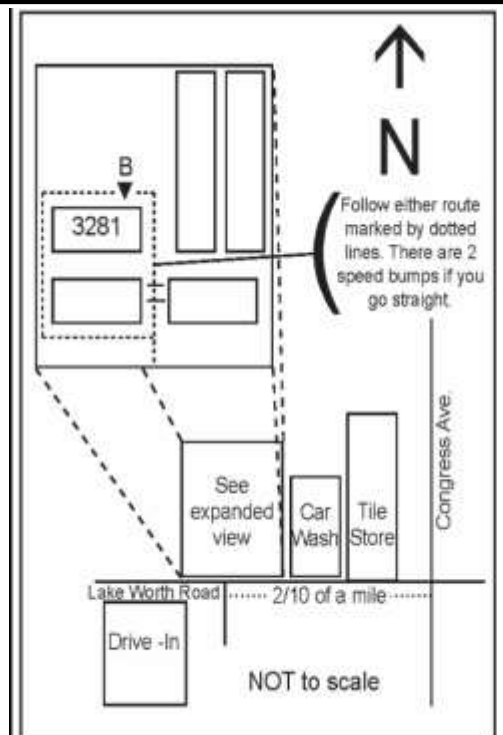
Shop Report

Open shop is available for lapidary, metal work, enameling, fused glass, classes and to use the library. You must be certified to use the kiln! For kiln certification and classes, please call Samantha Lazzaro.

At the present time, kiln use is limited to Monday Open Shop Hours. For beginning silversmith classes, please call Laura Simmons. Additional classes will be announced as they become available. When visiting the shop please know:

- ◆ You will be asked to sign a one-time liability waiver and be given a copy of the shop rules
- ◆ Always sign in and out of the log book and complete the information on the sign in sheet
- ◆ Drinks and food are permitted in the outer room only
- ◆ There is no fee to use the library or reference videos available in the shop

The street address of the shop is:
3281 Lake Worth Road, Suite B, Lake Worth, FL 33461



DECEMBER

Sun	Mon	Tue	Wed	Thu	Fri	Sat
						1
2	3 Open Shop** 10:30AM - 5 PM General Work Samantha 561/372-2359	4	5 BOARD MEETING 7:30 PM	6 Open Shop** 12:30-3:30 PM General Work Dennis 561/255-0292	7 Open Shop** 6-9 PM General Work Susan 561/293-1298	8
9	10 Open Shop** 10:30AM - 5 PM General Work Samantha 561/372-2359	11 MEMBERSHIP MEETING 7:30 PM	12	13 Open Shop** 12:30-3:30 PM General Work Dennis 561/255-0292	14 Open Shop** 6-9 PM General Work Susan 561/293-1298	15 HOLIDAY PARTY 6:00 PM
16	17 Open Shop** 10:30AM - 5 PM General Work Samantha 561/372-2359	18	19	20 Open Shop** 12:30-3:30 PM General Work Dennis 561/255-0292	21 Open Shop** 6-9 PM General Work Susan 561/293-1298	22
23	24	25	26	27 Open Shop** 12:30-3:30 PM General Work Dennis 561/255-0292	28 Open Shop** 6-9 PM General Work Susan 561/293-1298	29
30	31 Open Shop** 10:30AM - 5 PM General Work Samantha 561/372-2359					

CALL BEFORE GOING TO OPEN SHOP!!

Always call the shop steward before going to the shop.
 Open shop sessions may be cancelled or changed due to scheduling conflicts.
 If the assigned shop steward cannot be reached, call Susan Cairl, Head Shop Steward, to arrange for open shop.

The Rockhound

Official publication of the Gem & Mineral Society of the Palm Beaches, Inc.

JANUARY

Sun	Mon	Tue	Wed	Thu	Fri	Sat
		1	2 BOARD MEETING 7:30 PM	3 Open Shop** 12:30-3:30 PM General Work Dennis 561/255-0292	4 Open Shop** 6-9 PM General Work Susan 561/293-1298	5
6	7 Open Shop** 10:30AM - 5 PM General Work Samantha 561/372-2359	8	9	10 Open Shop** 12:30-3:30 PM General Work Dennis 561/255-0292	11 Open Shop** 6-9 PM PINELLAS GEM SHOW 10 AM—5 PM	12 PINELLAS GEM SHOW 10 AM—5 PM
13 PINELLAS GEM SHOW 12—5 PM	14 Open Shop** 10:30AM - 5 PM General Work Samantha 561/372-2359	15	16	17 Open Shop** 12:30-3:30 PM MEMBERSHIP MEETING 7:30 PM	18 Open Shop** 6-9 PM General Work Susan 561/293-1298	19
20	21 Open Shop** 10:30AM - 5 PM General Work Samantha 561/372-2359	22	23	24 Open Shop** 12:30-3:30 PM General Work Dennis 561/255-0292	25 Open Shop** 6-9 PM General Work Susan 561/293-1298	26
27 TRI-COUNTY PICNIC AT TY PARK 10 AM-4PM	28 Open Shop** 10:30AM - 5 PM General Work Samantha 561/372-2359	29	30	31 Open Shop** 12:30-3:30 PM General Work Dennis 561/255-0292		

CALL BEFORE GOING TO OPEN SHOP!!

Always call the shop steward before going to the shop.

Open shop sessions may be cancelled or changed due to scheduling conflicts.

If the assigned shop steward cannot be reached, call Susan Cairl, Head Shop

Steward, to arrange for open shop.

AVAILABLE CLASSES

CLASS	INSTRUCTOR	COST	DATE/TIME/NOTES
◇ Introduction to Chainmail ◇ How to Use the Jumpringer ◇ Introduction to Metalsmithing ◇ Viking Wire Weave	Laura Simmons 407/234-0444	\$30 + \$10 materials fee \$10 + \$5 materials fee \$50 + \$30 materials (copper) or \$60 materials (silver) \$30 + \$15 fee	Contact instructor to arrange.
Cabochon sessions Six 3-hr sessions	Susan Cairl 561/293-1298	\$75 + \$20 materials fee	Contact instructor to arrange.
Cold Connections Class Series: ◇ Explosion Pendant ◇ Fold Forming Bracelet w/Beveled Stone Setting ◇ Scrapbook Bracelet (rivets) ◇ Metal Etching & Air Chasing Bracelet ◇ 3D Pendant w/Druzy Stone Slice NEW!	Arlene Lazzaro 516/810-3495	\$40 + \$35 materials fee \$40 + \$35 materials fee \$40 + \$35 materials fee \$40 + \$40 materials fee \$40 + \$40 materials fee	Contact instructor to arrange.
Enameling	Samantha Lazzaro 561/372-2359	\$40 + \$50 materials fee	Contact instructor to arrange.
Flat Lap	Susan Cairl 561/293-1298	\$40 + \$10 supplies fee	Contact instructor to arrange.
Gem Tree	Dianna Ray 561/707-6753	TBD	Contact instructor to arrange.
Metalsmithing: ◇ Alien Prong Ring	Arlene Lazzaro 516/810-3495	\$40 + \$15 materials fee	Contact instructor to arrange.
Wire Fan Bracelet Class	Debi Kachman 561/568-8736	\$30 + \$20-50 materials fee (depending on metal) OR supply list can be provided	Contact instructor to arrange.
Wire Sculpture Class	Debi Kachman 561/568-8736	\$30 + \$20-50 materials fee (depending on metal) OR supply list can be provided	Contact instructor to arrange.

The Rockhound

Official publication of the Gem & Mineral Society of the Palm Beaches, Inc.

MEMBERSHIP DUES

Junior Membership—\$10.00
(Under age 18)

Single Membership—\$20.00
(Over age 18)

Family Membership—\$30.00
(Includes 2 adults and children under age
18 in a single household)

*Membership expires on December 31st
each year and is due by the end of
February of the new year.*

To renew your membership, make your
check or money order to:

Gem & Mineral Society of the Palm
Beaches, Inc. and mail to:

Membership Coordinator
Gem & Mineral Society
P.O. Box 18095
West Palm Beach, FL 33416-8095

NAME TAGS

Available from:
Ace Marking Devices (\$12.00)
3308 S. Dixie Hwy.
West Palm Beach, FL 33405
561/833-4073

SHOP FEES

Up to 3 hours shop time - \$5
Over 3 hours shop time - \$7

SEE CALENDAR FOR OPEN SHOPS

SHOP STEWARDS

Head Shop Steward:
Susan Cairl 561/293-1298

Laura Simmons 407/234-0444
Dennis Rietwyk 561/255-0292
Samantha Lazzaro 561/372-2359

Shop Phone:
561/585-2080

2018 OFFICERS

President*	Lee Miller	561/389-8584
1st Vice President*	Barbara Ringhiser	561/379-4307
2nd Vice President*	Jennifer Martin	561/281-5466
Secretary*	Lorna Hayes	561/389-8584
Treasurer*	Jenny Wright	561/634-1427

2018 DIRECTORS

Head Shop Steward*	Susan Cairl	561/293-1298
Membership*	Jennifer McIntyre	863/414-1240
Newsletter Editor*	Laura Phillips	561/523-3594
Member-at-Large*	Lo Rain Dudley	561/827-5793
Show Chairman*	Walter Triche	561/628-1031
Webmaster*	Richard Tracey	561/318-6891

COMMITTEE CHAIRPEOPLE

Hostess	Samantha Lazzaro	561/372-2359
Jr. Rockhound Program	Mitchell Turk	561/506-4655
Librarian	Shop Steward on Duty	
Programs	Barbara Ringhiser	561/379-4307
Raffle Coordinator	Lo Rain Dudley	561/827-5793
Refreshments	Arlene Lazzaro	516/810-3495
Sunshine Committee	Lo Rain Dudley	561/827-5793
Social Events	Debi Kachman	561/793-6777
Webmaster	Richard Tracey	561/318-6891

*Denotes a Voting Member of the Executive Committee.

WEBSITE

www.gemandmineralsociety.org

Club Email Addresses

membership@gmspb.org
newsletter@gmspb.org
president@gmspb.org
show@gmspb.org
vendorinfo@gmspb.org
webmaster@gmspb.org

Link to our smile.amazon.com account:
<http://smile.amazon.com/ch/59-6196330>

The Gem & Mineral Society of the Palm Beaches, Inc. is a 501 (c) (3) corporation and a member of the Eastern and Southeastern Federations of Mineral and Lapidary Societies, and is affiliated with the American Federation of Mineralogical Societies. Monthly meetings are held on the third Thursday of the month except for December, which is held on the second Thursday. Meetings start at 7:30 PM at the former Garden Club building (across from the Science Center), 4800 Dreher Trail North, West Palm Beach, FL 33405.

Send comments or submissions to newsletter@gemandmineralsociety.org