



# The Rockhound

Official Publication of the Gem & Mineral Society of the Palm Beaches, Inc.

[www.gemandmineralsociety.org](http://www.gemandmineralsociety.org)  
October 2017 Volume 51 Issue 1

## President's Message

Greetings, Rockhounds!

Update on Meeting Dates for the rest of the year: The October and November meetings will be held as usual, on the third Thursday of the month, at the Multi Purpose Center, at 7:30 PM. There was a potential conflict with the November Meeting, as the Science Center needed the building for their own use that day, however that event has been canceled. The December meeting, as always, has been moved earlier in the month to accommodate our election process and to minimize conflicts with the Holidays for our members. The December meeting will be held on Wednesday, December 13<sup>th</sup>, at the Multi-Purpose Center, at 7:30 PM, and Officer Elections for 2018 will take place at this meeting.

In review:

- ☐ October and November meetings will be held as usual.
- ☐ December Meeting, including Officer Elections: Wednesday, December 13, usual time and place.

Quick Announcements:

☐ Some of our open positions have been filled! We'd like to welcome Mitch Turk as our Junior Rockhound Chairperson, and Richard Tracey as our Web Master! We are still in need of a Membership Coordinator; if you are interested, let a Board Member know. The Nominating Committee is also working on our Officer Slate for next year...if you are interested in any of the officer positions, please speak to a Committee Member: Arlene Lazzaro, Debi Kachman, or Lee Miller.

☐ A quick reminder of the Donation Policy: If you wish to make a donation of any kind to the Club, please direct your donation to a member of the Donations Committee: Susan Cairl, Lo Rain, or Marta Cruz. This ensures your donation is properly documented and accounted for. As always, we need small donations for door prizes and other prize drawing items!

I won't see everyone at the October meeting, as I will be traveling to the EFMLS Annual Meeting, representing our Club. Our First Vice President, Barbara Ringhiser, will be attending as well. Our Second Vice President, Jen Martin, will be heading up the meeting - please give her all your support!

See You in November!  
Laura Simmons, President

## Membership Meeting

Thursday, October 19 at 7:30 pm  
4801 Dreher Trail North  
West Palm Beach FL 33405  
\* at the Multi-Purpose Center \*

## October Program

Get the popcorn ready! It's movie time! This month's program will be a fascinating video about gems and why they really are "Treasures of the Earth".



## Junior Rockhounds

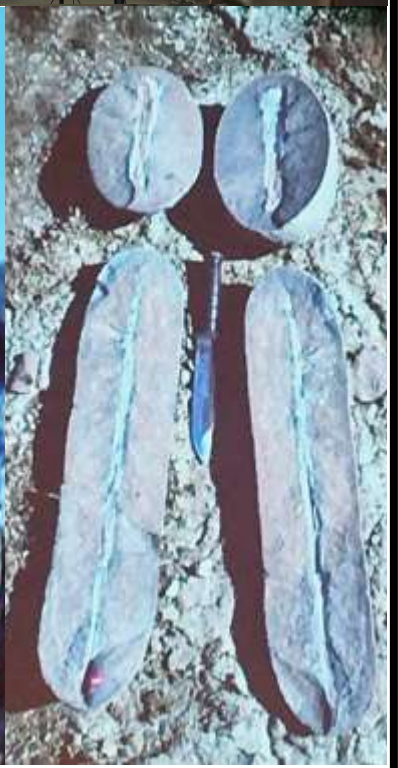
We have a new Junior Rockhound Chairman! But alas, he's out of town this month, so juniors can join the grownups to watch the video. Mitch Turk will be back next month with an exciting program for you!

## Official Announcement of Voting

In accordance with GMSPB By-laws, this is hereby an official announcement that **Voting for our 2018 Officers** will occur at the December General Meeting, to be held on Wednesday, December 13<sup>th</sup> at the South Florida Science Center and Aquarium's Multi Purpose Center, 4801 Dreher Trail N, West Palm Beach, FL 33405, at 7:30 PM.

# September Program: Antarctica Windfall

Professor Anton Oleinik from Florida Atlantic University





## Field Trip to the LEW Museum from Saturday, October 7

[www.museumoftheglades.org](http://www.museumoftheglades.org)



## TY PARK Tri-Club Picnic and Rock Swap & Sale

Sunday, January 14 from 10:00AM-4:00 PM  
Pavilion #9 at TY Park (see map)

- ◆ Relax and mingle with members of the Palm Beach, Gold Coast, and Miami clubs
- ◆ Bring a **potluck dish** to share, your **table service** and **drinks** (no glass containers)
- ◆ Bring **items to donate** to Raffles and Bingo, which pay for pavilion
- ◆ Arrive around 9:30-10:30 if you wish to set up a table to sell club related items (no charge), just bring **table** and **chairs**
- ◆ Lunch begins at 11:30
- ◆ Volunteers are needed to help set-up, sell tickets, call bingo, and clean-up.
- ◆ For more info, call Sean Branigan at 954/592-1503 or KC Foster at 561/523-4600

**DIRECTIONS:** From I-95 go West on Sheridan Street. Go North (right turn) on North Park Road. The Park entrance will be on the right (east) side. *Park admission is \$1.50 per person.*



## September Business Meeting Minutes

The monthly business meeting was held on September 21, 2017, and was opened by Laura Simmons at 21:07.

The newsletter editor, Laura Phillips, asked for contributions of pet photos for the Rockhound of the Month feature. Any type of pet qualifies.

It was reported that the club is still looking for a Webmaster.

Susan Cairl stated that she will be releasing a membership roster in the near future.

Lynda Koehler reported that she is teaching a jewelry class at the Jupiter Community Center. Brochures were provided.

Susan Cairl described the equipment available in the shop, and mentioned openings for the cabbing classes. She also reported some wind damage to shop due to Hurricane Irma. The air conditioning has been replaced in the back room.

Arlene Lazzaro is available during Monday open shop sessions for one-to-one assistance. Samantha Lazzaro is available for enameling.

Jenny Wright gave the treasurer's report. Raffle tickets are available from the Eastern Federation. Raffle prizes are listed on their website. She reported that at the end of August, the club checking account had \$4,504. The money market account had \$16,846.26, and the scholarship fund had \$3,963.08. There was \$22,600.04 in the show checking account, and the Square account had \$1600.00. The grand total was reported as \$49,520.42.

Jennifer Martin reported on upcoming programs. Next month will be a video from a Nova documentary.

Laura Simmons and Barbara Ringhiser will not be here for October meeting. Our usual space may not be available for the November meeting, so the meeting may need to be rescheduled. The December meeting will be earlier to accommodate the annual election of officers. This needs to be done prior to the holiday banquet on December 16. The TY Park picnic for September was cancelled because the park is closed due to hurricane damage. No new date has yet been set.

Walter Triche reported on the upcoming show. The next show committee meeting is scheduled for September 23 and all are welcome to attend. He thanked Lo Rain Dudley and Jenny Wright for doing storage inventory. Volunteers are still needed for the show. Only three booths are still available.

Mitch Turk agreed to be our new Junior Rockhound Chairman.

There were no Sunshine announcements.

There is a Field Trip scheduled for Saturday, October 7 to the Lawrence E. Will Museum in Belle Glade. The museum focuses on the history of the Everglades area, such as the Indians that lived in the area and Indian mounds. The museum requests a \$5 donation. Please let Jennifer Martin know if you plan to attend.

Laura Simmons reminded the club to use Smile on Amazon.

If anyone is interested in a Board position, please talk to the nominating committee. Debbie Kachman, Arlene Lazzaro, and Lee Miller are nominating members.

Member Carol Boyles will be having a yard sale. She has lots of rock material and will cut on site.

Laura Simmons adjourned the meeting at 21:32.



## Birthstone: OPAL

The name “opal” originates from the Greek word *opallios*, which meant “to see a change in color.”

The Roman scholar Pliny used the word *opalus* when he wrote about this gem’s kaleidoscopic “play” of colors that could simulate shades of any stone.

Opal’s characteristic “play-of-color” was explained in the 1960s, when scientists discovered that it’s composed of microscopic silica spheres that diffract light to display various colors of the rainbow. These flashy gems are called “precious opals;” those without play-of-color are “common opals.”

Dozens of opal varieties exist, but only a few (like Fire Opal and Boulder Opal) are universally recognized. Opals are often referred to by their background “body color”—black or white.

Opal’s classic country of origin is Australia. Seasonal rains soaked the parched outback, carrying silica deposits underground into cracks between layers of rock. When the water evaporated, these deposits formed opal. Sometimes, silica seeped into spaces around wood, seashells and skeletons, resulting in opalized fossils.



Since opal was discovered in Australia around 1850, the country has produced 95 percent of the world’s supply. Opal is also mined in Mexico, Brazil, Honduras, Ethiopia, the Czech Republic and parts of the U.S., including Nevada and

Idaho.

The water content of opal can range from three to 21 percent – usually between 6 and 10 in gem-quality material. This, combined with hardness of only 5.5 to 6 on the Mohs scale, makes opal a delicate gem that can crack or “craze” under

extreme temperature, dehydration or direct light. Wearing opal is well worth the extra care, though. For centuries, people have associated this gem with good luck. Though some recent superstitions claim that opals can be bad luck to anyone not born in October, this birthstone remains a popular choice.

## Birthstone: TOURMALINE

The name “tourmaline” comes from the Sinhalese words *tura mali*, which mean “stone of mixed colors.” As its name implies, tourmaline stands apart from other gems with its broad spectrum of colors in every shade of the rainbow.

Tourmaline is not one mineral, but a fairly complex group of minerals with different chemical compositions and physical properties. Certain trace elements produce distinct colors, and many resulting varieties have their own names:

Schorl or black tourmaline is rich in iron, which causes dark shades from deep brown to bluish-black. This variety makes up 95 percent of all tourmaline, though most of it isn’t gem-quality. Schorl, in particular, is said to have protective powers against harmful radiation, toxins and anxiety.



Dravite or brown tourmaline is rich in magnesium, which causes colors ranging from brown to yellow. It’s named for the Drave District of Carinthia (now Slovenia) where it’s found.

Elbaite offers the widest range of gem-quality tourmaline colors, due to lithium traces combined with other coloring elements:

Rubellite or red tourmaline is caused by manganese; but if the color becomes less vibrant under different light sources, it may be called pink



tourmaline. Indicolite or blue tourmaline can appear purplish blue or bluish green, depending on the amount of iron and titanium.

Verdelite or green tourmaline can resemble emerald, but if its color is caused by chrome and vanadium, it's called a chrome tourmaline.

Paraíba tourmaline is a vividly colored purplish or greenish blue variety found in Paraíba, Brazil. It's the most recently discovered, and because of its desirably intense colors, it's one of the most valuable.

Achroite or colorless tourmaline is rare.

Parti-colored tourmaline displays more than one color, due to chemical fluctuations during crystallization. A common color combination is green and pink. These are often cut in slices to reveal a red center surrounded by a green rim, earning the name "watermelon tourmaline."

Tourmaline is mined in Brazil, Sri Lanka, Nigeria, Mozambique, Madagascar, Afghanistan, Pakistan and the U.S.—mainly Maine and California.

Tourmaline is desirable because of its sheer range of color options. Combined with a good hardness of 7 to 7.5 on the Mohs scale, tourmaline makes very wearable jewelry.

One of this gem's most impressive traits is its ability to become electrically charged through heat (pyroelectricity) and through pressure (piezoelectricity). When charged, tourmaline can act as a magnet by oscillating, and by attracting or repelling particles of dust.

Ancient magicians used black tourmaline as a talisman to protect against negative energy and evil forces. Today, many still believe that it can shield against radiation, pollutants, toxins and negative thoughts.

-from [americangemsociety.org](http://americangemsociety.org)



To our Newest Member

Randee Solomon

## Show Committee Meeting

**Monday, October 23**

**7:30 pm at the Shop**

Our annual show is in just a few weeks!  
All members are encouraged to come and help us plan for another outstanding show.



Kelly Azor

Michael Breen

Odani Garcia

Linda Hersh

Daniel Jacobson

Ellen Jean

Deborah Kachman

Kathleen Krailler

Arlene Lazzaro

Cassandra Stryker



## Glass Blowing Classes

Michelle Renné is organizing these great classes on glass blowing!

Your choice of these classes:

**Saturday, October 28, 10 am - Noon**  
**Saturday, November 11, 10 am - Noon**  
**Saturday, December 2, 10 am - Noon**

Club members get classes at half price for just \$50!

You can make two round ornaments, a vase, a tumbler, a bowl, or a paper weight.



If you're interested in taking one of these classes, please contact Michelle Renné at 561/644-2323.

## Rock Yard Open House And Sale



Seven tons of rough to choose from, including many types of 1970s Canal Zone material, agates, jaspers, jade, sodalite, tiger eye, lots of African material, much more.



Slabs, cabs and rough available. Slabs can be cut to order from material you choose.



**Saturday, October 14, 2017**  
**9 AM to 3 PM**



Carolee Boyles  
Artemis Trading Company  
15210 67th Court North  
Loxahatchee, FL 33470  
813-431-4304



## Upcoming Events

**Saturday, October 13 - Loxahatchee, FL: Rock Yard Open House and Sale.** 9 am - 3 pm. See information on Page 6.

**Monday, October 23 - Lake Worth, FL: GMSPB Show Committee Meeting.** 7:30 pm at the Shop. All are welcome and encouraged to come! For more information, contact our Show Committee Chairman, Walter Triche 561/621-1031.

**Saturday, October 28 - Lake Worth, FL: Glass Blowing Class.** 10 am - Noon. See information on Page 6.

**Saturday, October 28 and Sunday, October 29 - Orlando, FL: Florida Fossil Hunters 2017 Fossil Fair.** Fossils, Rocks, Gems, and Minerals. Saturday 9 am - 5 pm. Sunday 10 am - 4 pm. See information on Page 7 or [floridafossilhunters.com](http://floridafossilhunters.com).

**Saturday, November 11 - Lake Worth, FL: Glass Blowing Class.** 10 am - Noon. See information on Page 6.

**Saturday, November 11 - West Palm Beach, FL: Field Trip to Norton Museum of Art.** See information on Page 9.

**Saturday, November 18 and Sunday, November 18 - West Palm Beach, FL: Gem and Mineral Society of the Palm Beaches Gem, Mineral, Jewelry, Bead, and Fossil Show.** Saturday 9 am - 6 pm. Sunday 10 am - 5 pm. See information on Page 8.

**Saturday, December 2 - Lake Worth, FL: Glass Blowing Class.** 10 am - Noon. See information on Page 6.

**Sunday, January 14 - Hollywood, FL: Tri-County Picnic at TY Park.** 10am - 4pm. See information on Page 3.

*Know of an event that might be of interest to other club members? Send information to Laura Phillips, the Newsletter Editor, and we can put it in the next newsletter! [laura@ahphillips.com](mailto:laura@ahphillips.com)*





Canaveral Mineral & Gem Society's  
43rd Annual

### Parade of Gems



SATURDAY & SUNDAY  
NOVEMBER 12 & 13, 2016  
10 A.M. TO 5 P.M.



MELBOURNE AUDITORIUM  
625 EAST Hibiscus Avenue  
MELBOURNE, FLORIDA 32901

Adult Donation: \$5 (\$4 with this flier)  
Kids <12 admitted free with paid adult



### FUN FOR THE WHOLE FAMILY & CHRISTMAS SHOPPING TOO!

- Unique hand-made jewelry & gifts
- Gemstones/Beads/Supplies for the DIY person on your list
- Rocks/fossils/minerals for the collector
- Kids hands-on workshop
- Demonstrations: stone cutting, wire wrapping, stamping, etc.



For more information:  
[canaveral-mgs.com](http://canaveral-mgs.com)



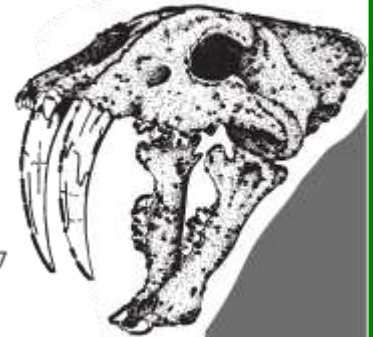
[facebook.com/](https://www.facebook.com/gemandmineralsocietyofthepalmbeaches)

[gemandmineralsocietyofthepalmbeaches](https://www.facebook.com/gemandmineralsocietyofthepalmbeaches)

Click on the link above to see our Facebook page - pictures, info, and more!

# 2017 FOSSIL FAIR

Florida Fossil Hunters



Twenty-sixth Annual  
Fossils, Rocks,  
Gems & Minerals

Saturday, October 28, 2017  
9:00am - 5:00pm  
Sunday, October 29, 2017  
10:00am - 4:00pm

Central Florida Fairgrounds  
4603 West Colonial Drive, Orlando, Florida 32808

\$4.00 Adults | \$1.00 Children

Learn to dig in Florida and  
see what can be discovered!

Directions:  
I-4 to Orlando, Exit 84,  
West Hwy 50/Colonial Drive  
exit Westbound.

The fairgrounds will be  
on the right side, just past  
Mercy Drive.



For more information on the 2017 Fossil Fair contact us by email at  
[info@floridafossilhunters.com](mailto:info@floridafossilhunters.com), call 407-699-9274, or check the website at  
[www.floridafossilhunters.com](http://www.floridafossilhunters.com)

Raffles

Vendors

Silent  
Auctions

Kids \$1  
Dig Pit

Educational  
Displays

Airconditioned!  
INDOORS!



## SUNSHINE NEWS

*Feel Better, Linda Hersh and  
Deborah Kashdan*

*Welcome Back to our snowbirds. We know you split your  
time between areas and possibly are members of Clubs in  
both locations. Thank You for supporting our Club!*

*Call Lo Rain and let her know about anyone who needs a little sunshine  
sent their way!  
561/827-5743*



# FIELD TRIP!!!

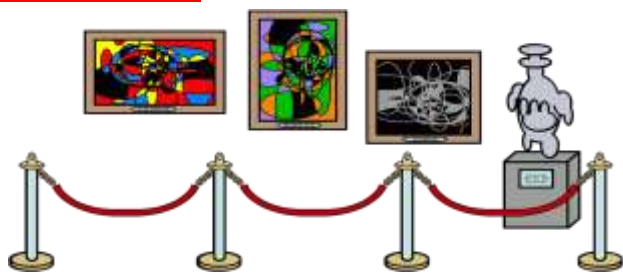
Norton Museum of Art  
Saturday, November 11  
12:00 Noon

The Norton Museum is undergoing extensive renovations which means admission is currently FREE! Even with the construction it's a fantastic place to visit. We are incredibly lucky to have this "gem" in our own backyard!

Whether you enjoy classical art, modern sculpture or exquisite jade pieces from the orient - this trip is for you!

Club members will meet at 12:00 pm at the museum information desk.

More information is available on their website [www.norton.org](http://www.norton.org).



## Club Purpose

To associate persons of the Palm Beach area of Florida who are interested in earth sciences, to work together as an organization in the gathering, cutting, displaying, and studying of rocks, shells, artifacts, and any kind of scientific objects of interest to the individual and the organization, to promote community interest in these objects.

FAIR USE NOTICE. This publication may contain copyrighted material the use of which has not been specifically authorized by the copyright owner. We are making such material available in our efforts to advance the educational understanding of the amateur jewelry fabrication and rock collecting hobbies. We believe this constitutes a 'fair use' of any such copyrighted material as provided for in section 107 of the U.S. Copyright Law. If you wish to use material from this publication for commercial or purposes of your own that go beyond 'fair use', you must obtain permission from the copyright owner.

The Rockhound Copyright 2017

by the Gem & Mineral Society of the Palm Beaches, Inc.

Permission to reprint original material herein not otherwise copyrighted is granted provided that credit is given to both author and publication. Articles not bylines are by the Editor.

# October Prizes

## 50/50 Raffle

### Door Prizes

Small mineral specimens  
Ruck's pit fossilized oyster

### Raffle Drawings

Amethyst crystal  
Quartz and pyrite specimens  
Alabaster paperweight  
Geode specimen  
Jewelry making items and other great stuff!



Come to the meeting by 7:30 PM to get a free ticket for our great door prizes!

We always appreciate your kind donations of hobby related items to use for extra door prizes and raffle items! To donate...just drop them off at a meeting!

Keith Klein, Auction Coordinator

## The Gem & Mineral Society of the Palm Beaches, Inc.



Is proud to present our

51<sup>ST</sup> ANNUAL

Gem, Mineral, Jewelry,  
Bead and Fossil Show

Featuring special exhibits, speakers & prize drawings!

November 18—19, 2017

South Fl. Fair-  
Center East

grounds/ Expo

ADULTS \$9  
2-DAY PASS \$14  
CHILDREN  
UNDER 12 FREE

Saturday 9AM to 6PM  
Sunday 10AM to 5PM

[www.gemandmineralsociety.org](http://www.gemandmineralsociety.org)

The Gem & Mineral Society of the Palm Beaches, Inc.

Present this Coupon for  
\$1.00 OFF\*ONE ADULT  
ADMISSION

(Feel Free to Copy this Coupon)  
LIMIT ONE COUPON  
PER PERSON

\*Not Valid  
With Any Other Discount

ROCK

FOSSIL HUNT  
GEM MINING  
SPIN-THE-WHEEL GAME  
(suggested donation \$1/spin)  
GEODE CRACKING  
FREE PARKING  
PRIZES  
DEMONSTRATIONS  
SPEAKERS  
EXHIBITS

FACE & ROCK PAINTING  
Proceeds from this event support  
GMSPB INC (a 501(c)(3) Corp.)



## Member Highlight: *Kelly Azor*

*If you've been with the club for a few years, and especially if you've spent time at the November show, you probably know our member of the month. Kelly coordinates our Demonstrations area at the show.*

*Kelly can't remember when she first joined the club but thinks it's about 15 years ago. She was introduced to the club by friends she met in local beading classes, and soon she began taking classes at the club's shop as well. Since the birth of her son, she's involved him with the club's activities as well, and they've both become avid rockhounds. "It's so much fun!" she says.*

Kelly is a special needs teacher by day and a mom by night, which keeps her pretty busy, but she does make time to coordinate the Demonstrations section of our *annual show. This year, she'll personally be demonstrating kumihimo, a Japanese form of braiding.*

*She's also working with organizations and hobbyists around Palm Beach County and beyond to set up demonstrations and displays that appeal to our show visitors. The coin club, the garden club, beading clubs, the science museum, art galleries and the like are invited to participate in the show.*

Some of the jewelry making demonstrations planned for this year include glass bead making, chain making, chainmaille, metalsmithing, faceting, and of course, kumihimo.

If you would like to participate in the demonstrations next month, Kelly invites you to contact her at 561/635.7619 or Barbara Ringhiser at 561/379-4307.



## *This is Blackie!*

This month's rockhound is not your average house pet! Blackie is a Serval, a large cat originating from Africa, and the faithful companion of our member Lynda Koehler.

Lynda adopted Blackie from a rescue in Okeechobee when he was two years old. He is now eight years old and weighs 35 pounds.

How did Lynda wind up with a huge cat? She's successfully raised two cougars from birth. Both cats lived long, happy lives with her in the enclosure she built for them, which includes a house, platforms (like large cat towers), and a kitty pool. Changes in the law now require a minimum of five acres for a cat the size of a cougar, but the enclosure meets requirements for housing Blackie.

Lynda spends time every day with Blackie, who eats out of her hand and particularly loves to be brushed. He also loves to watch the chickens outside his area, and like all cats, likes to sleep a lot!



Do you have a pet that we could feature next month? Please send a picture and a little information to Laura Phillips at [laura@ahphillips.com](mailto:laura@ahphillips.com).



## Graves Mountain Minerals Stolen!

On Saturday night or early Sunday, during the Graves Mountain Open House, October 6th-8th, 2017, thieves ransacked the vendors tables at the mountain stealing approximately \$50,000 worth of gems and minerals from several vendors. Several high end rutile specimens were taken as well as amethyst, opals and other valuable minerals. Please share this information with your collecting friends, gem clubs and rock shops in your area.

Below are some pictures of just a few of the specimens taken, I will try to include sizes and more photos as I get them from the owners. I will also be adding police report information when I receive it.

If you are a shop owner or you see someone trying to sell any of these pieces or any top quality rutile crystals, be aware that they may be from this theft.

If possible, try to get the names of the individuals or some other identifying information, vehicle tag number, etc. for the police.

Please call the following people immediately:

Lincoln County Sheriffs Dept. 706-359-7320 and  
Graves Mountain Caretaker: Clarence Norman Jr. 706-401-3173

For more information [click here](#).





# Eager to Learn New Skills?

There are always classes available to you at our Shop in Lake Worth! Here are some great possibilities.

## 1. Enameling with Samantha Lazzaro

Samantha holds an Open Shop every Monday from 10:30 am to 5:00 pm. She is able to teach the enameling class almost any Monday for any size crowd, even one person. You'll have time to make two projects, such as the ones pictured below. The cost is \$40 plus a \$50 materials fee. All you need to do is contact Samantha at 561/372-2359 or [crystalgrace2006@yahoo.com](mailto:crystalgrace2006@yahoo.com) to make arrangements. Take it from the Newsletter Editor, this is a fun and rewarding class, and well worth taking a day off work if you need to!



## 2. Caboshon Cutting with Susan Cairl

Learn to cut and polish magnificent cabochons from slabs. This is a 6-session class on Friday evenings from 6:00 to 9:00 pm, and you can join almost anytime by contacting Susan at 561/293-1298 or [scairl@bellsouth.net](mailto:scairl@bellsouth.net). Upon completion of the series, you'll be certified to work in the capping area during any Open Shop session. The cost is \$75 plus a \$20 materials fee.

## 3. Glass Blowing with Michelle Renné

You'll need to catch this class soon, as Michelle is moving out of our area! Fortunately, three classes are available to you in the next few months. All are held on Saturday mornings at the Benzaiten Gallery in Lake Worth. The cost is \$50, and you can choose either October 28, November 11, or December 7. You can join in the fun by contacting Michelle at 561/644-2323 or [tfae2@gmail.com](mailto:tfae2@gmail.com). More information is on Page 7.

## 4. Demonstrations at the Annual Show

Our annual show is just a few weeks away on November 18 and 19! Check out the Demonstrations area at the show and watch local artisans at work. Many of the demonstrations will be for classes we hold at the Shop, and you'll be able to talk to the instructors there.

## 5. Contact the Instructor

Most of the classes we hold are listed on Page 19. Contact any instructor if you're interested in the class. When a few people request a class, our instructors generally schedule one and we announce it here in the newsletter or in email blasts.

## The Rockhound

Official publication of the Gem & Mineral Society of the Palm Beaches, Inc.

### **VOLUNTEERTIME FOR THE ANNUAL SHOW!!!**

November 18<sup>th</sup> and 19<sup>th</sup>, the weekend of our annual show, will be here before we know it!! Our 51<sup>st</sup>!!!! That means it is time to start thinking about volunteering NOW. Here's a list of volunteer positions and the duties required. YOU can make a difference! Without you, our society members, it would be impossible to fill the many time periods necessary to make the 2017 show the best show yet! Over 100 volunteer shifts need to be filled. **The club cannot run without the proceeds from the show!!**

### **PLEASE LET US COUNT ON YOU.**

#### **THURSDAY Set-up crew - NOVEMBER 16TH**

Approximately 6 people are needed to move tables around and set up each booth area. We will be supervising Fairgrounds help in the placement of tables according to our floor plan. Also, we will be able to do the Society's setup on Thursday. We have hired help to do the heavy lifting, but we still need members to assist in directing helpers on where unloaded materials go at the fairgrounds. Materials such as our display cases, from the storage unit, must be loaded in the rented truck, and brought to the Fairgrounds, unloaded and set-up. We will also be setting up the flume.

#### **FRIDAY SET/UP/SUNDAY TAKE DOWN - NOVEMBER 17th and 19th**

As many volunteers as we can get are needed to set-up during the day on Friday and to take-down after the show from 5:00 PM on Sunday. Friday, the display cases need to be assembled, as well as many odds and ends jobs too numerous to go into here. On Sunday, after the show is over, everything must be packed up, loaded in the truck, and delivered back to the storage area. Again, we have hired help to do the heavy lifting, but we still need members to assist in directing helpers on where materials go to be loaded into the truck. We also will need some people to go to the storage location to direct the hired help on where to put the unloaded materials

#### **TICKET TAKERS, NOVEMBER 18<sup>th</sup> and 19th**

Two people are needed for each 2-hour time slot. Responsibilities include taking tickets at the entrance doors, tearing the ticket in half, depositing one half in the box, and giving the second half to the guest. This position requires either sitting on a stool or standing. Requirements include a pleasant, friendly, helpful, courteous, and kind personality. At times, ticket takers are very busy. This is a very important position because ticket takers are the "first impression" that people get of our society.

#### **INFORMATION TABLE - NOVEMBER 18<sup>th</sup> and 19th**

Three people are necessary for each 2-hour time slot. Responsibilities include answering questions concerning the show, checking in volunteers and giving them their badges and providing information about our society's activities. Information attendants should be able to direct visitors and provide information about everything from who is in charge, to where a particular dealer is located. This position requires sitting at the information desk. The ability to be pleasant and helpful, without getting flustered, is important.

#### **SCHOLARSHIP FUND PRIZE DRAWING - NOVEMBER 18<sup>th</sup> and 19th**

Two people per 2-hour time slot are needed. Responsibilities include encouraging people to purchase tickets for the prize drawing of the many items available. It is extremely important to be friendly, inviting, cheerful, and encouraging without being insistent. This position requires some standing. The main objective is to point out the items that may be won with only a \$1.00 ticket

#### **SHOW SECURITY - NOVEMBER 18<sup>th</sup> and 19th**

Two to four people are needed for each 2-hour time slot. Responsibilities are to observe people, watch for those acting in a disorderly manner (for example, drunk, smoking, or shoplifting), and report it to Show Chairman, Committee Chairperson, Fairgrounds Security, or Armed Security. Show Security guards should NEVER confront or accuse anyone. They ONLY report the incident. Greeting the public in a friendly manner is also important. This position requires walking around or standing. **PLEASE DO NOT SHOP OR SIT DOWN AND EAT DURING YOUR SHIFT.**

## The Rockhound

Official publication of the Gem & Mineral Society of the Palm Beaches, Inc.

### DEMONSTRATIONS- NOVEMBER 18<sup>th</sup> and 19<sup>th</sup>

People are needed to demonstrate their skills during each 2-hour time slot. The area is large enough for several demonstrators to present simultaneously. This is the opportunity to greet the public and show-off by participating in beading, stained glass, wire wrapping, chain making, or any other lapidary skills. If you are interested in volunteering to demonstrate at the show, please contact demonstration coordinator Kelly Azor-Anderson at 561-635-7619

### LUNCH ON SET-UP DAY - NOVEMBER 17<sup>th</sup>

Lunch will be served to the dealers, society members, and fairgrounds workers on Friday, set-up day. We need someone who will shop for the supplies (we have a list - sandwich makings, drinks, salad, plates, utensils, donuts, coffee, etc.) Everyone makes their own sandwiches. You would be advanced funds for shopping. Serving is buffet style. We need a couple of volunteers there to oversee the buffet between 9am and 5pm - 2 hour shifts.

### MINING/ FOSSIL DIG/ GEODE CRACKING/ SPINNING WHEEL GAME – NOVEMBER 18<sup>th</sup> and 19<sup>th</sup>

We need the following people *for each 2-hour time slot* to run the mining area effectively. Duties include:

- 2 people working together to collect money and use an iPad for credit card payments, enter inventory on an iPad and give out tickets
- 1 person to crack geodes
- 1 person for working the Spin-the-Wheel game and for keeping the table stocked with prizes. The game involves a table marked with squares that correspond to numbers on the wheel. The player wins the prize in the square matching the number on the wheel.
- 1 person to identify fossils and gemstones at the flume area. Volunteers will be briefed on what fossils and gemstones are available in the dig and mine. There will be cards available with fossil samples and rough gemstone samples to aid in identification if participants request the information.
- 1 person to help visitors select geodes.
- 1 person to fill bucket bags and fill buckets as needed.
- 1 person to keep the flume running smoothly, moving used gravel, handing out screens, etc.

*This is a very active area and these volunteer positions, with few exceptions, are not sedentary positions.*

Please remember, if you commit to an assigned position, please perform those duties *unless asked to temporarily work in in an extra busy area.*

If you really want your choice of positions, remember to contact us early, it is first come first serve.

The form can be turned in to any of the persons listed below, in whichever manner is easiest for you.

Turn the form in at any upcoming Membership meeting, Email, phone or mail

Dianna Ray  
561-707-6753  
countrycutie29@aol.com

Walt Triche  
561-628-1031  
wtriche@gmail.com

Lee Miller  
561-329-8872  
wilfredl2244@yahoo.com

By mail: GMSPB Volunteers  
PO Box 18095  
West Palm Beach, FL 33416-  
8095



# The Rockhound

Official publication of the Gem & Mineral Society of the Palm Beaches, Inc.

Name: \_\_\_\_\_ Phone: \_\_\_\_\_

Best time to call: \_\_\_\_\_ Email: \_\_\_\_\_

Positions interested in: \_\_\_\_\_

(use additional sheet if necessary)

Please circle the shifts for which you are available:

Thursday, Nov. 16 (set-up)	9-11am	11am-1pm	1-3pm	3-5pm
Friday, Nov. 17 (set-up, lunch)	9-11am	11am-1pm	1-3pm	3-5pm
Saturday, Nov. 18	9-11am	11am-1pm	1-3pm	3-6pm (3 hours)
Sunday, Nov. 19	10 - Noon	Noon - 2pm	2 - 5pm (3 hours)	5 - ?pm (take down)

# SHOP TALK

## Open Shop Schedule



Open shop is available for members use only, but visitors are welcome to stop by during open shop hours. Open shop fees are \$5.00 for the first 3 hours and \$7.00 for time over three hours.

Important! Members must complete a 6 class Certification Class before using the cabbing equipment. This class runs for six consecutive weeks for 3 hours each week to provide safety instructions and cabbing techniques. If you received training elsewhere, you will still need to demonstrate your proficiency before using shop equipment. For information on cabbing certification please call Susan Cairl @ 561-293-1298

### Open Shop Hours:

- Mondays 10:30am - 5:00pm, Samantha Lazzaro, Shop Steward - 631-764-6556
- Tuesdays Evenings by Appointment - Laura Simmons, Shop Steward - 407-234-0444
- Thursdays 12:30pm - 3:30pm, Dennis Rietwyk, Shop Steward - 561-255-0292
- Fridays 6:00pm - 9:30pm, Susan Cairl, Shop Steward - 561-293-1298

“Stuff Happens” so please call first to verify the shop will be open as scheduled. If the assigned shop steward cannot be reached, call Susan Cairl, Head Steward, to confirm.

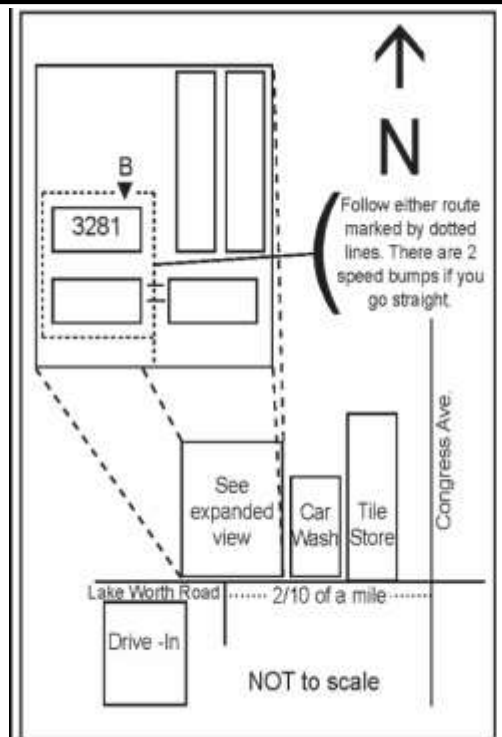
## Shop Report

Open shop is available for lapidary, metal work, enameling, fused glass, classes and to use the library. You must be certified to use the kiln! For kiln certification and classes, please call Samantha Lazzaro.

At the present time, kiln use is limited to Monday Open Shop Hours. For beginning silversmith classes, please call Laura Simmons. Additional classes will be announced as they become available. When visiting the shop please know:

- ◆ You will be asked to sign a one-time liability waiver and be given a copy of the shop rules
- ◆ Always sign in and out of the log book and complete the information on the sign in sheet
- ◆ Drinks and food are permitted in the outer room only
- ◆ There is no fee to use the library or reference videos available in the shop

The street address of the shop is:  
3281 Lake Worth Road, Suite B, Lake Worth, FL 33461



# The Rockhound

Official publication of the Gem & Mineral Society of the Palm Beaches, Inc.



1	2 Open Shop** 10:30AM - 5 PM General Work Samantha 561/372-2359	3 Open Shop** 6-9 PM <b>RSVP ONLY!</b> Laura 407/234-0444	4 <b>BOARD MEETING</b> 7:30 PM @ Shop	5 Open Shop** 12:30-3:30 PM General Work Dennis 561/255-0292	6 Open Shop** 6-9 PM General Work Susan 561/293-1298	7 <b>LEW MUSEUM</b> <b>FIELD TRIP</b> 1:00 PM
8	9 Open Shop** 10:30AM - 5 PM General Work Samantha 561/372-2359	10 Open Shop** 6-9 PM <b>RSVP ONLY!</b> Laura 407/234-0444	11	12 Open Shop** 12:30-3:30 PM General Work Dennis 561/255-0292	13 Open Shop** 6-9 PM General Work Susan 561/293-1298	14 <b>ROCK YARD</b> <b>OPEN HOUSE</b> & <b>SALE</b> 9 AM - 3 PM
15	16 Open Shop** 10:30AM - 5 PM General Work Samantha 561/372-2359	17 Open Shop** 6-9 PM <b>RSVP ONLY!</b> Laura 407/234-0444	18	19 Open Shop** 12:30-3:30 PM General Work Dennis 561/255-0292	20 Open Shop** 6-9 PM General Work Susan 561/293-1298	21
22	23 Open Shop** 10:30AM - 5 PM <b>SHOW COMMITTEE MEETING</b> 7:30 PM @ Shop	24 Open Shop** 6-9 PM <b>RSVP ONLY!</b> Laura 407/234-0444	25	26 Open Shop** 12:30-3:30 PM <b>MEMBERSHIP MEETING</b> 7:30 PM @ Science Center	27 Open Shop** 6-9 PM General Work Susan 561/293-1298	28 <b>FLORIDA FOSSIL FAIR</b> Page 3 <b>GLASS BLOWING CLASS</b> Page 6
29 <b>FLORIDA FOSSIL FAIR</b> Orlando 10 AM-4 PM See Page 3	30 Open Shop** 10:30AM - 5 PM General Work Samantha 561/372-2359	31 Open Shop** 6-9 PM <b>HAPPY HALLOWEEN</b>				

## CALL BEFORE GOING TO OPEN SHOP!!

Always call the shop steward before going to the shop.

Open shop sessions may be cancelled or changed due to scheduling conflicts.

If the assigned shop steward cannot be reached, call Susan Cairl, Head Shop

Steward, to arrange for open shop.



# The Rockhound

Official publication of the Gem & Mineral Society of the Palm Beaches, Inc.

# NOVEMBER

Sun	Mon	Tue	Wed	Thu	Fri	Sat
	Open Shop** 10:30AM - 5 PM General Work Samantha 561/372-2359	Open Shop** 6-9 PM <b>RSVP ONLY!</b> Laura 407/234-0444	<b>1</b> BOARD MEETING 7:30 PM @ Shop	<b>2</b> Open Shop** 12:30-3:30 PM General Work Dennis 561/255-0292	<b>3</b> Open Shop** 6-9 PM General Work Susan 561/293-1298	<b>4</b>
<b>5</b>	Open Shop** 10:30AM - 5 PM General Work Samantha 561/372-2359	Open Shop** 6-9 PM <b>RSVP ONLY!</b> Laura 407/234-0444	<b>8</b>	<b>9</b> Open Shop** 12:30-3:30 PM General Work Dennis 561/255-0292	<b>10</b> Open Shop** 6-9 PM General Work Susan 561/293-1298	<b>11</b> GLASS BLOWING 10am-Noon FIELD TRIP 12 Noon See Page 9
<b>12</b>	Open Shop** 10:30AM - 5 PM General Work Samantha 561/372-2359	Open Shop** 6-9 PM <b>RSVP ONLY!</b> Laura 407/234-0444	<b>15</b>	<b>16</b> Open Shop** 12:30-3:30 PM MEMBERSHIP MEETING 7:30 PM @ Science Center	<b>17</b> Open Shop** 6-9 PM General Work Susan 561/293-1298	<b>18</b> GMSPB SHOW 9 AM - 6 PM
<b>19</b> GMSPB SHOW 10 AM - 5 PM	Open Shop** 10:30AM - 5 PM General Work Samantha 561/372-2359	Open Shop** 6-9 PM <b>RSVP ONLY!</b> Laura 407/234-0444	<b>22</b>	<b>23</b> 	<b>24</b> Open Shop** 6-9 PM General Work Susan 561/293-1298	<b>25</b>
<b>26</b>	Open Shop** 10:30AM - 5 PM General Work Samantha 561/372-2359	Open Shop** 6-9 PM <b>RSVP ONLY!</b> Laura 407/234-0444	<b>29</b>	<b>30</b> Open Shop** 12:30-3:30 PM General Work Dennis 561/255-0292		

## CALL BEFORE GOING TO OPEN SHOP!!

Always call the shop steward before going to the shop.

Open shop sessions may be cancelled or changed due to scheduling conflicts.

If the assigned shop steward cannot be reached, call Susan Cairl, Head Shop

Steward, to arrange for open shop.

## The Rockhound

Official publication of the Gem & Mineral Society of the Palm Beaches, Inc.

### AVAILABLE CLASSES

CLASS	INSTRUCTOR	COST	DATE/TIME/NOTES
<ul style="list-style-type: none"> <li>◇ Introduction to Chainmail</li> <li>◇ How to Use the Jumpringer</li> <li>◇ Introduction to Metalsmithing</li>   <li>◇ Viking Wire Weave</li> </ul>	Laura Simmons 407/234-0444	\$30 + \$10 materials fee \$10 + \$5 materials fee \$50 + \$30 materials (copper) or \$60 materials (silver) \$30 + \$15 fee	Contact instructor to arrange.
Art Clay Silver	Michelle Renné 561/644-2323	\$50 + est. \$85 materials fee (depending on cost of silver)	Contact instructor to arrange.
Cabochon sessions Six 3-hr sessions	Susan Cairl 561/293-1298	\$75 + \$20 materials fee	Contact instructor to arrange.
Cold Connections Class Series: <ul style="list-style-type: none"> <li>◇ Explosion Pendant</li> <li>◇ Fold Forming Bracelet w/Beveled Stone Setting</li> <li>◇ Scrapbook Bracelet (rivets)</li> <li>◇ Metal Etching &amp; Air Chasing Bracelet</li> <li>◇ 3D Pendant w/Druzy Stone Slice NEW!</li> </ul>	Arlene Lazzaro 516/810-3495	\$40 + \$35 materials fee \$40 + \$35 materials fee \$40 + \$35 materials fee \$40 + \$40 materials fee \$40 + \$40 materials fee	Contact instructor to arrange.
Embellished Multi-Metal Jewelry	Michelle Renné 561/644-2323	\$40 + \$20 materials fee	Contact instructor to arrange.
Enameling	Samantha Lazzaro 561/372-2359	\$40 + \$50 materials fee	Contact instructor to arrange.
Flat Lap	Susan Cairl 561/293-1298	\$40 + \$10 supplies fee	Contact instructor to arrange.
Fused Glass (Beginner)	Harriet Flashenburg 561/733-1466	\$50 + \$50 materials fee	Four afternoon sessions Class taught in season only. Contact instructor to arrange.
Gem Tree	Dianna Ray 561/707-6753	TBD	Contact instructor to arrange.
Metalsmithing: <ul style="list-style-type: none"> <li>◇ Alien Prong Ring</li> </ul>	Arlene Lazzaro 516/810-3495	\$40 + \$15 materials fee	Contact instructor to arrange.
Non-solder Wire Work	Michelle Renné 561/644-2323	\$40 + \$15 materials fee	Contact instructor to arrange.
Wire Fan Bracelet Class	Debi Kachman 561/568-8736	\$30 + \$20-50 materials fee (depending on metal) OR supply list can be provided	Contact instructor to arrange.
Wire Sculpture Class	Debi Kachman 561/568-8736	\$30 + \$20-50 materials fee (depending on metal) OR supply list can be provided	Contact instructor to arrange.

# The Rockhound

Official publication of the Gem & Mineral Society of the Palm Beaches, Inc.

## MEMBERSHIP DUES

Junior Membership—\$10.00  
(Under age 18)  
Single Membership—\$20.00  
(Over age 18)  
Family Membership—\$30.00  
(Includes 2 adults and children under age  
18 in a single household)

*Membership expires on December 31st  
each year and is due by the end of  
February of the new year.*

To renew your membership, make your  
check or money order to:

Gem & Mineral Society of the Palm  
Beaches, Inc. and mail to:

Membership Coordinator  
Gem & Mineral Society  
P.O. Box 18095  
West Palm Beach, FL 33416-8095

## NAME TAGS

Available from:  
Ace Marking Devices (\$12.00)  
3308 S. Dixie Hwy.  
West Palm Beach, FL 33405  
561/833-4073

## SHOP FEES

Up to 3 hours shop time - \$5  
Over 3 hours shop time - \$7

SEE CALENDAR FOR OPEN SHOPS

## SHOP STEWARDS

Head Shop Steward:  
Susan Cairl 561/293-1298

Laura Simmons 407/234-0444  
Dennis Rietwyk 561/255-0292  
Samantha Lazzaro 561/372-2359

Shop Phone:  
561/585-2080

## 2017 OFFICERS

President*	Laura Simmons	407/234-0444
1st Vice President*	Barbara Ringhiser	561/379-4307
2nd Vice President*	Jennifer Martin	561/281-5466
Secretary*	Lorna Hayes	561/389-8584
Treasurer*	Jenny Wright	561/634-1427

## 2017 DIRECTORS

Head Shop Steward*	Susan Cairl	561/293-1298
Membership*	OPEN	
Newsletter Editor*	Laura Phillips	561/523-3594
Member-at-Large*	Lo Rain Dudley	561/644-2323
Show Chairman*	Walter Triche	561/827-5793
Webmaster*	Richard Tracey	561/318-6891

## COMMITTEE CHAIRPEOPLE

Hostess	Samantha Lazzaro	561/372-2359
Jr. Rockhound Program	Mitchell Turk	561/506-4655
Librarian	Shop Steward on Duty	
Programs	Jennifer Martin	561/281-5466
Raffle Coordinator	Keith Klein	561/541-1243
Refreshments	Arlene Lazzaro	516/810-3495
Sunshine Committee	Lo Rain Dudley	561/827-5793
Social Events	Debi Kachman	561/793-6777

\*Denotes a Voting Member of the Executive Committee.

## WEBSITE

[www.gemandmineralsociety.org](http://www.gemandmineralsociety.org)

### Club Email Addresses

membership@gemandmineralsociety.org  
newsletter@gemandmineralsociety.org  
president@gemandmineralsociety.org  
show@gemandmineralsociety.org  
vendorinfo@gemandmineralsociety.org  
webmaster@gemandmineralsociety.org

Link to our **smile.amazon.com** account:

<http://smile.amazon.com/ch/59-6196330>

The Gem & Mineral Society of the Palm Beaches, Inc. is a 501 (c) (3) corporation and a member of the Eastern and Southeastern Federations of Mineral and Lapidary Societies, and is affiliated with the American Federation of Mineralogical Societies. Monthly meetings are held on the third Thursday of the month except for December, which is held on the second Thursday. Meetings start at 7:30 PM at the former Garden Club building (across from the Science Center), 4800 Dreher Trail North, West Palm Beach, FL 33405.

Send comments or submissions to [newsletter@gemandmineralsociety.org](mailto:newsletter@gemandmineralsociety.org)