



The Rockhound

Official Publication of the Gem & Mineral Society of the Palm Beaches, Inc.

www.gemandmineralsociety.org
April 2017 Volume 50 Issue 7

Membership Meeting Thursday, April 20 at 7:30 pm

4801 Dreher Trail North, West Palm Beach FL 33405 (at the Science Center)



April Program - Carolee Boyles

Carolee has been a member of the club since shortly after she moved to the area from Tampa. She has collected materials from all over the world. Carolee will present on how she began in lapidary, her winding journey to where she is now in the field, and where and how she collects and imports her specimens. She will be bringing items to show the club and will provide a lecture and slideshow of her collection. Other passions of hers include showing dogs, fishing and hunting. She is also a freelance writer.

Junior Rockhounds Program

Hello there Junior Rockhounds! Let's briefly review where we've been over the past few months and where we are going: We have studied the differences between an atom, a molecule, and a crystal. From there, we learned that the type and shape of crystals depend on the atomic structure and chemical bond between molecules. We also learned that metamorphic rocks are classified by their chemical composition. Last month, we learned about photoluminescence (rocks that glow!), and how the ability of a rock to glow depended on its atomic structure. This month, we will learn about radioactivity, what it means if something is radioactive, and the different types of radiation. Some types are fairly safe, while others are extremely dangerous.

President's Message

Hello Rockhounds!

I have a couple things of note this month...

Firstly, I have been advised that the old Garden Club Building renovation is complete, and we will be moving our regular meetings back across the street beginning in May. I am told that the space has been completely redone and will accommodate our needs for a main meeting area, snack area (including kitchen), and a class area for the Junior Rockhounds. I've been invited to take a walk through, and hope to have a chance to do that this month before our meeting so I can tell everyone all about it! So, just to be clear, our next meeting, April 20th, will be held in the Science Center main building, but our May meeting and future meetings will be held in the "new" Multi Purpose Center (the old Garden Club Building).

Our Steak Dinner and Auction was a great success! It was nice to see everyone that can't always make it to meetings. Special "Thanks!" go out to Debi Kachman for organizing everything, and to Lo Rain and Susan Cairl for preparing the auction items. I know so many others helped with set up, cooking, and so forth...thanks to everyone!

Finally, after much confusion about donations and where they go, we have decided to start a "Donation Committee." This team will be co-chaired by Lo Rain and Susan Cairl, and will be responsible for receiving, documenting, and determining disposition of all incoming donations of items. If you are interested in serving on this committee, please contact Lo, Susan, or myself. Also, if someone contacts you wishing to make a donation, please refer them to one of us so that we can make sure all protocols are followed.

We also have some exciting field trip ideas being worked on, and don't forget about the William Holland and Wild Acres sessions coming up! The William Holland schedule is elsewhere in the Rockhound, and a flier on Wild Acres will be available shortly.

See You Soon! - Laura Simmons, President

Field Trip to Ruck's Pit - March 11, 2017



Steak Dinner & Auction - March 25, 2017

We had a good turnout and everyone seemed to have a good time, thanks primarily to Walt Triche, Mike Perkins, and Lee Miller, who cooked amazing steaks again. Lorna Hayes got there early to cover tables and help set up. I'm sorry I can't name everyone who helped, although all the board members helped tremendously. I received help from the time I got there until all the packing up was done from Dan Jacobson of BigJakesGold.com, so if you find you're going to Alaska, look him up or check out his site.



The largest THANKS goes to Lo Rain for getting all the Auction things ready, set up, and sold. It was a group effort, but we owe a special thanks to our president Laura Simmons recording and her husband Grant who did such a good job announcing the auction. Thank you Barbara for once again using the credit card machine so everyone could spend more money.

Our 2017 Auction was able to make approximately \$2034.00.

- Social Events Debi Kachman



APRIL

Birthstone: Diamond

You probably already know of the diamond's toughness. In fact, it's the hardest gemstone and is made of just one element: carbon.

Its structure makes it 58 times harder than anything in nature and can only be cut with another diamond. While it's become nearly synonymous with wedding engagements, it's also the perfect stone for individuals who want something that's just as appropriate for everyday wear as it is for special occasions.



Diamonds come in several colors, including yellow, red, pink, blue, and green, and range in intensity from faint to vivid. Generally speaking, the more saturated the color, the higher the value.

In fact, diamonds sparkling with intense color are rare and may be priced higher than a colorless diamond of equal size. Because fancy-color diamonds are very desirable, color is sometimes introduced in a laboratory. These are correctly called color-treated diamonds.

Its unique physical properties means it has the best possible luster of any gemstone when cut and polished well. So if you're in the market for "sparkle," the diamond is the gemstone for you.

But before this process was understood, many ancient civilizations believed that diamonds were lighting made real on earth. Perhaps this is the reason that diamonds have often been associated with great healing powers. Many thought the diamond could cure brain disease, alleviate pituitary gland disorders and draw toxins from the blood.

- from americangemsociety.org

WILLIAM HOLLAND SFMS WEEK JUNE 11, 2017



sfmsworkshops.com

GMSPB HOUNDS ROCK!

This is **JULIE**, our RockHOUND for April! She is pictured here with her humans, Jen and Ridley Martin, after walking the Diabetes Walk. The three of them walk it every year!



And here is Julie, dressed for a 2016 Halloween party. She was the Little Pretzel Girl! Adorable, eh?

Julie is a rescue and is believed to be about 6 years old. Her humans think she is a mix of Chihuahua and Rat Terrier.

When she's not walking for diabetes or celebrating Halloween, Julie loves to go to the dog park. At home, she loves to chase around her feline sibling, Adso.

If you would like your four-legged (feathered, finned, or whatever) friend featured as our RockHOUND of the month, send photos and a description to the newsletter editor, Laura Phillips, at laura@ahphillips.com.

March Business Meeting Minutes

Barbara Ringhiser opened the meeting on March 16, 2017 at 21:06.

A motion was made to accept the minutes from the last club meeting. The motion carried.

Jenny Wright gave the Treasurers Report.

Barbara Ringhiser reported that member numbers are increasing in Junior Rockhounds.

The Newsletter Editor was not present. No newsletter news was given.

The Webmaster was not present; no news was offered.

The Membership Chairman was not present. Barbara Ringhiser and Lo Rain gave new member updates from this meeting.

Lo Rain thanked volunteers that helped in getting ready for steak dinner. She invited any interested members to make donations for the auction, and asked if anyone can provide a truck for transporting auction boxes. If you are able to help, please contact Lo for pick up on Friday March 24.

Jennifer Martin discussed our Facebook page and showed photos from the recent field trip to Rucks Pit.

The Show Chairman was not present. Barbara reported that the vendors are already signing for our November show. The next show meeting will be on March 27 at 19:30 at the shop. Everyone is welcome.

Barbara Ringhiser reported on Social Events, giving the date and location for the next TY Park picnic on June 4, from 10:00-15:00.

Debbie Kachman reviewed the steak dinner time and location. She asked anyone who wanted to help with cooking or setup to please come at 09:30. People also need to call Debbie if they need a well-done steak. Please bring membership cards.

The next Board meeting will be on April 5th at 19:30 at the shop.

The meeting was adjourned at 21:25.

SUNSHINE REPORT



Thank You for Donations:

Arlene Lazzaro, Linda Hersh, Sue Bearse, Samantha Lazzaro, Marta Cruz, Christina Campbell, Margo Gilson and Barbara Ringhiser.

Thank You to:

Everyone that helped with the steak dinner, and all that came too. Thanks to Grant Simmons, the auctioneer.

Prayers to:

Lee Miller, John Hanzen, Jackie Yoder of the Crystal Cave.

Call **Lo Rain** and let her know about anyone who needs a little sunshine sent their way!



Robin Deaton * Susan DeWeil
Steve Ensor * Harriett Flashenburg
Alan Meltzer * Nataly Morales
Mary Ricciardi * Susan Rostas
Jackie Stamper * Britney Torres
Lisa Ullman * Cathy Wenner
Jenny Wright



"I think we're gonna need a lot of candles this month!"

March Prizes

50/50 Raffle:

Amethyst crystal specimen

Door Prizes:

Grab bags with goodies
Tumbled stones
Other fun items

Raffle Drawings:

Bead and shell necklace
Rough quartz specimen
Cabochons
Crystal cluster
Fossils
And other good stuff!



Come to the meeting by 7:30 PM to get a free ticket for our great door prizes!

We always appreciate your kind donations of hobby related items to use for extra door prizes and raffle items! To donate...just drop them off at a meeting!

Keith Klein, Auction Coordinator

Club Purpose

To associate persons of the Palm Beach area of Florida who are interested in earth sciences, to work together as an organization in the gathering, cutting, displaying, and studying of rocks, shells, artifacts, and any kind of scientific objects of interest to the individual and the organization, to promote community interest in these objects.

FAIR USE NOTICE. This publication may contain copyrighted material the use of which has not been specifically authorized by the copyright owner. We are making such material available in our efforts to advance the educational understanding of the amateur jewelry fabrication and rock collecting hobbies. We believe this constitutes a 'fair use' of any such copyrighted material as provided for in section 107 of the U.S. Copyright Law. If you wish to use material from this publication for commercial or purposes of your own that go beyond 'fair use', you must obtain permission from the copyright owner.

The Rockhound Copyright 2017
by the Gem & Mineral Society of the Palm Beaches, Inc.
Permission to reprint original material herein not otherwise copyrighted is granted provided that credit is given to both author and publica-

FIELD TRIP PLANNING

is underway for the year. The recent club trip to the Fort Drum Crystal Mine (Ruck's Pit) was a lot of fun!

There are planned trips to Coral Castle in Miami and The Shell Factory & Nature Park in Ft. Myers. Dates and specifics will follow, so keep an eye on future newsletters.

If anyone has any ideas for club field trips, please send an email to Jennifer Martin (rid808@yahoo.com).



The Gem & Mineral Society of the Palm Beaches, Inc.



Is proud to present our

51ST ANNUAL

Gem, Mineral, Jewelry,
Bead and Fossil Show

Featuring special exhibits, speakers & prize drawings!

November 18—19, 2017

South Fl. Fair-
Center East

grounds/ Expo

ADULTS \$9
2-DAY PASS \$14
CHILDREN
UNDER 12 FREE

Saturday 9AM to 6PM
Sunday 10AM to 5PM

www.gemandmineralsociety.org

The Gem & Mineral Society of the Palm Beaches, Inc.

Present this Coupon for
\$1.00 OFF*ONE ADULT
ADMISSION

(Feel Free to Copy this Coupon)
LIMIT ONE COUPON
PER PERSON

*Not Valid
With Any Other Discount

ROCK

FOSSIL HUNT

GEM MINING

SPIN-THE-WHEEL GAME

(suggested donation \$1/spin)

GEODE CRACKING

FREE PARKING

PRIZES

DEMONSTRATIONS

SPEAKERS

EXHIBITS

FACE & ROCK PAINTING

Proceeds from this event support
GMSPB INC (a 501(c)(3) Corp.)



Member Highlight:

Ray Ritari

To Ray, rocks are a hobby that has interested him for a long time. He earned a minor in geology from the University of Washington where he was able to do some geology field work with another hobby, fishing the western rivers or hiking/hunting the western states.

Ray retired from managing stadiums, arenas and convention centers a couple years ago, and he and his wife Pat do the snowbird thing now. They have a place in the Island Park caldera just outside of Yellowstone National Park and a condo here. Summertime is spent collecting and slabbing rocks, mostly petrified wood, agate and jasper and winters here grinding and polishing those rocks.

His favorite collecting locations are in Idaho, Montana and Oregon, but Northern Nevada is special as well. He finds lots of obsidian right outside his cabin, courtesy of the Yellowstone volcanic eruption's rhyolite flows. Ray and Pat stop along the way between their two homes, thus having collected in twelve states. Ray says our club's shop has been a fantastic asset to his life here in Florida. He took Susan's introductory class and hopes to start taking some jewelry classes in the next couple years.

If any members are interested in collecting out west, Ray offers to share information and general locations. Here is one simple tip....Look for flight deals to Salt Lake City and start exploring.

Upcoming Events

April 22-23 - West Palm Beach, FL: Gem, Jewelry & Bead Show. Saturday & Sunday 10-5 at the South Florida Fairgrounds, 9067 Southern Blvd, West Palm Beach, FL. For more information: frankcoxproductions.com.

April 28-30 - Orlando, FL: Rock, Mineral, Gem, Jewelry & Fossil Show. Florida National Guard Armory, 2809 South Fern Creek Ave., Orlando, FL 32806. Hosted by Central Florida Mineral and Gem Society. Fri 1-6, Sat 10-6, and Sun 10-5. Vendors offer beads, minerals, gemstones, custom jewelry, fossils, artifacts, metaphysical stones, etc. Silent Auction and Door Prizes. Demonstrations: beading, cabochons and wire wrapping. Family Activities. Contact: phayes3@cfl.rr.com. Admission: Adults \$5, Students \$2, Uniformed Scouts Free. Website: www.cfmgs.org.

June 4 - Hollywood, FL: TY PARK Tri-Club Picnic and Rock Swap & Sale. Potluck, raffles, bingo, Sun 10-3. Details in upcoming newsletters.

June 11-17 - Young Harris, GA: 2017 SE Federation Week at William Holland. See class descriptions on next two pages. Full information at fmsworkshops.com.

June 17 - Charlotte Hall, MD: EFMLS Region IV Potluck Picnic and Rock Swap/Sale. Gilbert Run Recreational Park, 13140 Charles St, Charlotte Hall, MD 20622. Sat 9-5. Admission to the park is \$5 per carload. FREE event for all EFMLS rock club members and their families and friends. Participants are asked to bring a potluck dish to share, and one labeled specimen donation. For more information, contact Dave Lines at 240/427-7062 or Dave.Lines@earthlink.net.

William Holland Workshop

June 11-17, 2017

<http://sfmsworkshops.com/>

Tuition \$370

Full descriptions of class and instructors on website



Beading – Gail DeLuca

Gail's 2017 SFMS classes will be all about playing with flat Peyote Stitch. This class will be appropriate for both beginners and experienced stitchers. Class kits include bead kits and instructions for 4 projects using variations of flat peyote stitch: Color Block Bracelet, Hombre Ombre Amulet Bag, Zig Zag Bracelet, Freeform bracelet

Class Kit Fee \$150. Includes beads, findings, instructions, and notions for four complete projects as pictured. Several color options will be available.



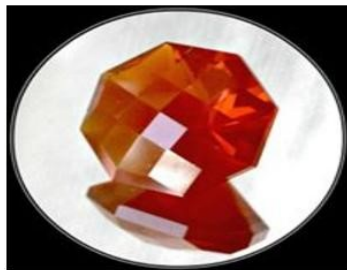
Cabs 2 With Intarsia – Paul Roberts

This course is designed for those with some cabbing experience who wish to broaden their skills. Dopless cabbing of fancy shapes and freeforms (including use of the instructor's special carving wheels and jeweler's bit) will receive some attention although for the most of this week we will concentrate on making composite cabochons (intarsia utilizing a Genie cabbing machine and an intarsia grinder). We will also cover instructions for simple settings (wire/groove and prong-sets). Lab Fee: \$45 Estimated Material Costs: \$0 -\$100



Casting – Bill Harr

This class will teach silver casting for beginner and intermediate silversmithing. The emphasis will be on production centrifugal casting, meaning techniques for high reliability. The class will teach centrifugal and vacuum casting, wax modeling, spruing, investing, burnout, casting, finishing and polishing, rubber mold making and wax injection. Steam casting will be covered if there is interest. Waxes will be available, and students will learn to inject their own. Lab Fee: \$80 Estimated Material Costs: \$0 -\$100



Gemstone Faceting – Linda Searcy

In this week long workshop, you will 1) get acquainted with the faceting machine. 2) learn about abrasive disks / laps to do the cutting / grinding and polishing. 3) learn how to turn a piece of natural or man-made (synthetic) crystal into a beautiful gemstone; learn how to prepare / dop a stone; learn how to read and understand a faceting diagram; learn Meet Point (precision) faceting. By the end of the week, you should complete at least one or several gemstones. Material / Lab fee: \$50



Immersion Enameling and Cold Connection – Debora Mauser

First we will learn the immersion method of enameling, often referred to as Painting with Fire. We will combine that with various cold connection treatments and metal shapes formed with a hydraulic press. Students will enamel beads, flat pieces and formed pieces. Your class fee includes one tank of map gas, use of all enamel and enhancements, all copper and brass needed to complete projects, beads, ear wires and leather.

Class fee \$175, includes gas, enamel, metal, beads, leather, rivets.

William Holland Workshop

June 11-17, 2017

<http://sfmsworkshops.com/>

Tuition \$370

Full descriptions of class and instructors on website



Inlay/Silver 1 INTRO TO INLAY – Chuck Bruce & Co-Teacher Micah Kirby

Beginning Inlay Jewelry – Students will construct an inlay pendant (project 1), and student choice after. Suggestions for project, Large Inlay pendant, inlay bead, Inlay Ring, Belt Buckle, and Cuff links. Students can bring basic silver tools, pocketknife or scribe, will have most tools needed. Students need to bring or purchase 2-3 slabs of rock that are similar hardness. Lab Fee: \$150.00 Includes Sterling Silver for Project 1. Estimate Material Cost: First 1 projects are included in lab fee, other materials plan on \$100 to \$300.



Opals 1 – Cheryl Kasper

You will learn about various types of opals, how to cut and polish opal, how to read a stone before and during cutting, what makes opal precious, how opal forms, the equipment and supplies used to cut, treatments, care and tips for setting opals, opal valuation and why opal is such a unique and mysterious gemstone. Opals, books and supplies will be available for purchase. You are invited to bring your own opal as well. No prior experience is required. Lab fee: \$70



Silver 2 -Southwest Style, Vickie Prillaman

This class will cover the Southwestern style of jewelry. We will discuss the styles and what are the differences between the Hopi, Navaho, and Zuni and other tribes. You will learn how to make several sizes of feathers, flowers, geckos, and other common southwest symbols. We will make our own appliques to add onto pieces of jewelry, whether it's rings, bracelets, pendants, or earrings. We will also use stamps to make designs in the metal. Lab Fee: \$80.00 Est. materials cost, depending on the price of silver: \$190.00-\$270.00



Silver I – Pattie Appleby

Time to hone those solder skills! Our first project is a sterling silver CRAZY CHAIN! During the week we will learn how to use the rolling mill, hydraulic press, and other tools in the studio! We are also going to make a bezel by building a stone-set sterling silver wide band ring. Then, let's make a chunky filigree ring! And finish the week off with a stone-set pendant with a toggle closure. And, of course, there will be fun, quick items to make during the week. Lab fee is \$60 and the class projects' fee will be approximately \$150-175



Wire I – Spoon Jewelry – Jan Stephens

This course will be a fun filled week designed to give students a sample of both the art of wire jewelry making and jewelry made of repurposed vintage Silverware. The first two days will be spent making wire bracelets, rings and earrings while learning basic wire wrapping techniques. This will be followed by three days of experimenting with bending vintage pieces of Silverware into beautiful "SilverWear" bracelets, rings, earrings and pendants. Course Fee: \$175.00

SHOP TALK

Open Shop Schedule

Open shop is available for members use only, but visitors are welcome to stop by during open shop hours. Open shop fees are \$5.00 for the first 3 hours and \$7.00 for time over three hours.



Important! Members must complete a 6 class Certification Class before using the cabbing equipment. This class runs for six consecutive weeks for 3 hours each week to provide safety instructions and cabbing techniques. If you received training elsewhere, you will still need to demonstrate your proficiency before using shop equipment. For information on cabbing certification please call Susan Cairl @ 561-293-1298

Open Shop Hours:

Mondays 10:30am - 5:00pm, Samantha Lazzaro, Shop Steward - 631-764-6556
Tuesdays Evenings by Appointment - Laura Simmons, Shop Steward - 407-234-0444
Thursdays 12:30pm - 3:30pm, Dennis Rietwyk, Shop Steward - 561-255-0292
Fridays 6:00pm - 9:30pm, Susan Cairl, Shop Steward - 561-293-1298

“Stuff Happens” so please call first to verify the shop will be open as scheduled. If the assigned shop steward cannot be reached, call Susan Cairl, Head Steward, to confirm.

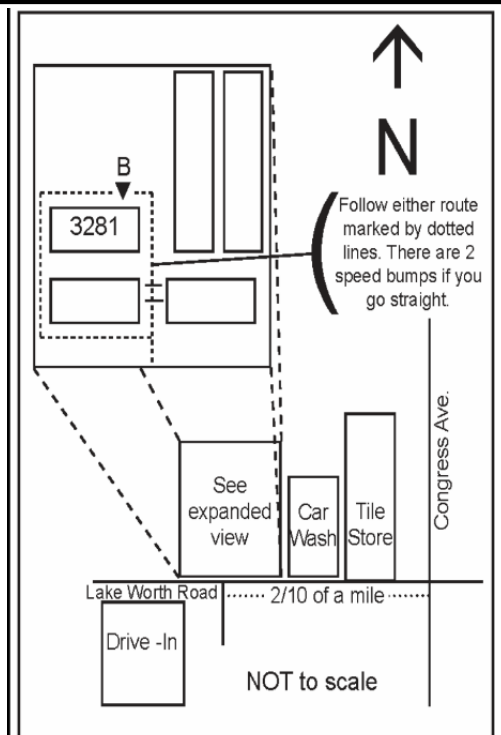
Shop Report

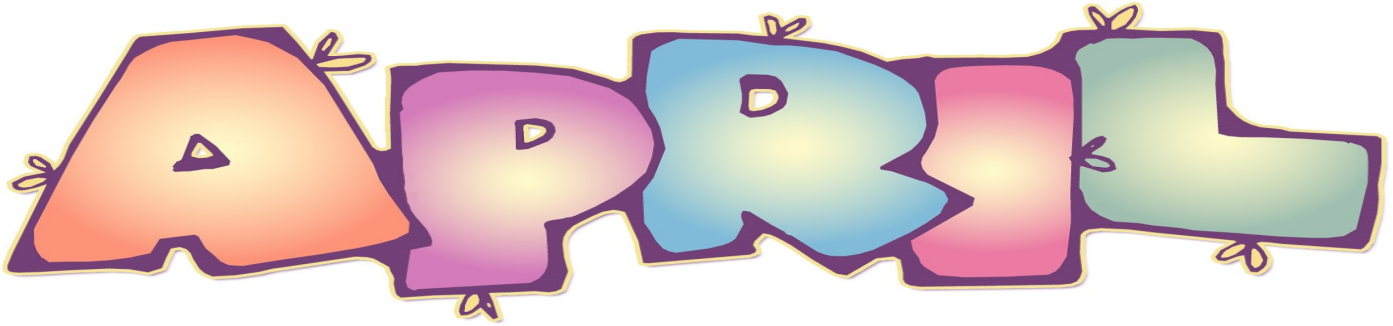
Open shop is available for lapidary, metal work, enameling, fused glass, classes and to use the library. You must be certified to use the kiln! For kiln certification and classes, please call Samantha Lazzaro.

At the present time, kiln use is limited to Monday Open Shop Hours. For beginning silversmith classes, please call Laura Simmons. Additional classes will be announced as they become available. When visiting the shop please know:

- ◆ You will be asked to sign a one-time liability waiver and be given a copy of the shop rules
- ◆ Always sign in and out of the log book and complete the information on the sign in sheet
- ◆ Drinks and food are permitted in the outer room only
- ◆ There is no fee to use the library or reference videos available in the shop

The street address of the shop is:
3281 Lake Worth Road, Suite B, Lake Worth, FL 33461





Sun	Mon	Tue	Wed	Thu	Fri	Sat
						1
2	3 Open Shop** 10:30AM - 5 PM General Work Samantha 631/764-6556	4 Open Shop** 6-9 PM RSVP ONLY! Laura 407/234-0444	5 BOARD MEETING 7:30 PM @ Shop	6 Open Shop** 12:30-3:30 PM General Work Dennis 561/255-0292	7 Open Shop** 6-9 PM General Work Susan 561/293-1298	8
9	10 Open Shop** 10:30AM - 5 PM General Work Samantha 631/764-6556	11 Open Shop** 6-9 PM RSVP ONLY! Laura 407/234-0444 Passover Starts	12	13 Open Shop** 12:30-3:30 PM General Work Dennis 561/255-0292	14 Open Shop** 6-9 PM General Work Susan 561/293-1298	15
16 Easter	17 Open Shop** 10:30AM - 5 PM General Work Samantha 631/764-6556	18 Open Shop** 6-9 PM RSVP ONLY! Laura Passover Ends	19	20 Open Shop** 12:30-3:30 PM MEMBERSHIP MEETING 7:30 PM @	21 Open Shop** 6-9 PM General Work Susan 561/293-1298	22
23	24 Open Shop** 10:30AM - 5 PM General Work Samantha 631/764-6556	25 Open Shop** 6-9 PM RSVP ONLY! Laura 407/234-0444	26	27 Open Shop** 12:30-3:30 PM General Work Dennis 561/255-0292	28 Open Shop** 6-9 PM General Work Susan 561/293-1298	29
30						

****CALL BEFORE GOING TO OPEN SHOP!!**

Always call the shop steward before going to the shop.
 Open shop sessions may be cancelled or changed due to scheduling conflicts.
 If the assigned shop steward cannot be reached, call Susan Cairl, Head Shop
 Steward, to arrange for open shop.



Sun	Mon	Tue	Wed	Thu	Fri	Sat
	1 Open Shop** 10:30AM - 5 PM General Work RSVP ONLY! Susan 561/293-1298	2 Open Shop** 6-9 PM RSVP ONLY! Laura 407/234-0444	3 BOARD MEETING 7:30 PM @ Shop	4 Open Shop** 12:30-3:30 PM General Work Dennis 561/255-0292	5 Open Shop** 6-9 PM General Work Susan 561/293-1298	6
7	8 Open Shop** 10:30AM - 5 PM General Work RSVP ONLY! Susan 561/293-1298	9 Open Shop** 6-9 PM RSVP ONLY! Laura 407/234-0444	10	11 Open Shop** 12:30-3:30 PM General Work Dennis 561/255-0292	12 Open Shop** 6-9 PM General Work Susan 561/293-1298	13
14 	15 Open Shop** 10:30AM - 5 PM General Work RSVP ONLY! Susan 561/293-1298	16 Open Shop** 6-9 PM RSVP ONLY! Laura 407/234-0444	17	18 Open Shop** 12:30-3:30 PM MEMBERSHIP MEETING 7:30 PM @	19 Open Shop** 6-9 PM General Work Susan 561/293-1298	20
21	22 Open Shop** 10:30AM - 5 PM General Work RSVP ONLY! Susan 561/293-1298	23 Open Shop** 6-9 PM RSVP ONLY! Laura 407/234-0444	24	25 Open Shop** 12:30-3:30 PM General Work Dennis 561/255-0292	26 Open Shop** 6-9 PM General Work Susan 561/293-1298	27
28	29 	30 Open Shop** 6-9 PM RSVP ONLY! Laura 407/234-0444	31			

****CALL BEFORE GOING TO OPEN SHOP!!**

Always call the shop steward before going to the shop.
 Open shop sessions may be cancelled or changed due to scheduling conflicts.
 If the assigned shop steward cannot be reached, call Susan Cairl, Head Shop Steward, to arrange for open shop.

AVAILABLE CLASSES

CLASS	INSTRUCTOR	COST	DATE/TIME/NOTES
◇ Introduction to Chainmail ◇ How to Use the Jumpringer ◇ Introduction to Metalsmithing ◇ Viking Wire Weave	Laura Simmons 407/234-0444	\$30 + \$10 materials fee \$10 + \$5 materials fee \$50 + \$30 materials (copper) or \$60 materials (silver) \$30 + \$15 fee	Contact instructor to arrange.
Art Clay Silver	Michelle Renné 561/644-2323	\$50 + est. \$85 materials fee (depending on cost of silver)	Contact instructor to arrange.
Cabochon sessions Six 3-hr sessions	Susan Cairl 561/293-1298	\$75 + \$20 materials fee	Contact instructor to arrange.
Cold Connections Class Series: ◇ Explosion Pendant ◇ Fold Forming Bracelet w/Beveled Stone Setting ◇ Scrapbook Bracelet (rivets) ◇ Metal Etching & Air Chasing Bracelet ◇ 3D Pendant w/Druzy Stone Slice NEW!	Arlene Lazzaro 516/810-3495	\$40 + \$35 materials fee \$40 + \$35 materials fee \$40 + \$35 materials fee \$40 + \$40 materials fee \$40 + \$40 materials fee	Contact instructor to arrange.
Embellished Multi-Metal Jewelry	Michelle Renné 561/644-2323	\$40 + \$20 materials fee	Contact instructor to arrange.
Enameling	Samantha Lazzaro 561/372-2359	\$40 + \$50 materials fee	Contact instructor to arrange.
Flat Lap	Susan Cairl 561/293-1298	\$40 + \$10 supplies fee	Contact instructor to arrange.
Fused Glass (Beginner)	Harriet Flashenburg 561/733-1466	\$50 + \$50 materials fee	Four afternoon sessions Class taught in season only. Contact instructor to arrange.
Gem Tree	Dianna Ray 561/707-6753	TBD	Contact instructor to arrange.
Metalsmithing: ◇ Alien Prong Ring	Arlene Lazzaro 516/810-3495	\$40 + \$15 materials fee	Contact instructor to arrange.
Non-solder Wire Work	Michelle Renné 561/644-2323	\$40 + \$15 materials fee	Contact instructor to arrange.
Wire Fan Bracelet Class	Debi Kachman 561/568-8736	\$30 + \$20-50 materials fee (depending on metal) OR supply list can be provided	Contact instructor to arrange.
Wire Sculpture Class	Debi Kachman 561/568-8736	\$30 + \$20-50 materials fee (depending on metal) OR supply list can be provided	Contact instructor to arrange.

The Rockhound

Official publication of the Gem & Mineral Society of the Palm Beaches, Inc.

MEMBERSHIP DUES

Junior Membership—\$10.00
(Under age 18)

Single Membership—\$20.00
(Over age 18)

Family Membership—\$30.00
(Includes 2 adults and children under age
18 in a single household)

*Membership expires on December 31st
each year and is due by the end of
February of the new year.*

To renew your membership, make your
check or money order to:

Gem & Mineral Society of the Palm
Beaches, Inc. and mail to:

Membership Coordinator
Gem & Mineral Society
P.O. Box 18095
West Palm Beach, FL 33416-8095

NAME TAGS

Available from:
Ace Marking Devices (\$12.00)
3308 S. Dixie Hwy.
West Palm Beach, FL 33405
561/833-4073

SHOP FEES

Up to 3 hours shop time - \$5
Over 3 hours shop time - \$7

SEE CALENDAR FOR OPEN SHOPS

SHOP STEWARDS

Head Shop Steward:
Susan Cairl 561/293-1298

Laura Simmons 407/234-0444
Dennis Rietwyk 561/255-0292
Samantha Lazzaro 561/372-2359

Shop Phone:
561/585-2080

2017 OFFICERS

President*	Laura Simmons	407/234-0444
1st Vice President*	Barbara Ringhiser	561/379-4307
2nd Vice President*	Jennifer Martin	561/281-5466
Secretary*	Lorna Hayes	561/389-8584
Treasurer*	Jenny Wright	561/634-1427

2017 DIRECTORS

Head Shop Steward*	Susan Cairl	561/293-1298
Membership*	Robin Deaton	561/319-1126
Newsletter Editor*	Laura Phillips	561/740-0360
Member-at-Large*	Lo Rain Dudley	561/644-2323
Show Chairman*	Walter Triche	561/827-5793
Webmaster*	Ingrid Webster	561/200-7383

COMMITTEE CHAIRPEOPLE

Hostess	Samantha Lazzaro	561/372-2359
Jr. Rockhound Program	Larry Deaton	561/358-1747
Librarian	Shop Steward on Duty	
Programs	Jennifer Martin	561/281-5466
Raffle Coordinator	Keith Klein	561/541-1243
Refreshments	Arlene Lazzaro	516/810-3495
Sunshine Committee	Lo Rain Dudley	561/827-5793
Social Events	Debi Kachman	561/793-6777

*Denotes a Voting Member of the Executive Committee.

WEBSITE

www.gemandmineralsociety.org

Club Email Addresses

membership@gemandmineralsociety.org
newsletter@gemandmineralsociety.org
president@gemandmineralsociety.org
show@gemandmineralsociety.org
vendorinfo@gemandmineralsociety.org
webmaster@gemandmineralsociety.org

Link to our smile.amazon.com account:
<http://smile.amazon.com/ch/59-6196330>

The Gem & Mineral Society of the Palm Beaches, Inc. is a 501 (c) (3) corporation and a member of the Eastern and Southeastern Federations of Mineral and Lapidary Societies, and is affiliated with the American Federation of Mineralogical Societies. Monthly meetings are held on the third Thursday of the month except for December, which is held on the second Thursday. Meetings start at 7:30 PM at the former Garden Club building (across from the Science Center), 4800 Dreher Trail North, West Palm Beach, FL 33405.

Send comments or submissions to newsletter@gemandmineralsociety.org

The **Rockhound**

Official publication of the Gem & Mineral Society of the Palm Beaches, Inc.