



Gem and Mineral Society of the Palm Beaches, Inc.

West Palm Beach, FL

A 501(c)3 Non-Profit Organization



Home



News



Event
Calendar



Gem Show



Officers



Members



Juniors



Work Shop



Classes



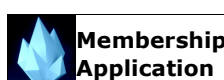
Pictures



Links



Contact



Membership
Application



Trading
Post



Site Map

The Rockhound

Official Publication of the Gem & Mineral Society of the Palm Beaches, Inc.

www.gemandmineral.cc

April 2015 Volume 48 Issue 8

The next general membership meeting will be held Thursday, April 16, 2015 at 7:30 PM

4800 Dreher Trail North, West Palm Beach FL 33405 (across from the Science Center)

April Program — SHOW and SELL

April is our bi-annual "SHOW and SELL" !!! Come help promote our club members' passion. Anyone who would like to reserve a table for the nominal fee of a \$10 value donation of a lapidary-related item please call Amber Griggs at 56/472-4998.

Junior Rockhounds Program — Geodes

This month we will take a look at geodes. We'll learn about how they are formed and what makes them sparkle so much. We even have a few geodes we will crack open and examine! Here is a link to read up on them. See ya on Thursday! <http://scienceline.org/2012/11/where-do-geodes-come-from/>



President's Message

Well, has everyone done their taxes? I'm sure EVERYONE is getting some money back!

Anyone who has a birthday this month gets an EXTRA door prize ticket!!!

I would like to thank our loyal, helpful members for man / woman-ing the club info table at the Frank Cox Show March 28th and 29th at the Fairgrounds: Gale Langford, Eloise Wilhelms, Ron Ketelaar, Dianna Ray and Deb and Jeff Slutzky! Members are VOLUNTEERS and these people were! THANKS AGAIN!

We had a surprise visit from Past President and Past Show Chairman JACK STAMPER (whose son, Josey, just had a baby girl, April, to join his son, Wyatt and wife Virginia). It was good to see him and his daughter, Pamela again. Yes, he will be teaching another silversmithing class this summer. He was a great help I.D. rocks and minerals at the meeting. Thanks Jack!!!

Barbara Ringhiser, Jenny Wright, KC Foster and I went to Hickory, NC the weekend of March 27th, 28th and 29th for the EFMLS Annual Convention. It was 29° at night! But the weather and scenery were beautiful. It was a busy, informative weekend. Their gem show was smaller than ours but had a nice variety of rocks and minerals



[Click on the little Rockhound to read our monthly Newsletter:](#)



(not many fossils for me, though).

The **steak picnic** is coming up April 19th. Please bring your donations (lapidary related) to the meeting or the picnic. Recycle those pieces you're tired of, don't have room for, duplicates or just don't want!

Thanks for being a member. Without you there wouldn't be a club! If you have any information, comments, complaints (don't give them to ME! kidding...), please contact me by phone, text or message or email me at tfhae2@aol.com.

Sincerely, Michelle Renné

Page 1



April Birthdays

Karl Brandt • Nat Epstein • Ed Flashenburg • George Grammer

Ron Ketelaar • Gail Marcarelli • Terry Mehegan • Alan Meltzer

Donna Parviainen • Mary Ricciardi • Jack Stamper • Jenny Wright

"You can't help getting older, but you don't have to get old." ~ George Burns



Door Prizes...Raffle Items

Raffles items for this month: Stone carving • necklace • 2 silver & stone rings • 2 stretch bracelets • 1/2 thunderegg • 3 Herkimer diamonds

Come to the meeting by 7:30 PM to get a free ticket for our great door prizes!

Door prizes for this month: small rock slices • small cabochons • mineral specimens

We always appreciate your kind donations of hobby-related items to use for extra door prizes and raffle items! To donate...just drop them off at a meeting!

Keith Kline, Raffle Coordinator



MICROMOUNTERS

Our group *usually* meets the first Thursday of the month from 7:30 PM - 9:30 PM.

Bring a microscope, minerals, questions, and (maybe a yummy treat?). We always have lots of giveaways. We will teach you to identify minerals and how to mount micro-minerals. If you don't have a microscope, we have extras and some are for sale at reasonable prices.

Please RSVP KC Foster

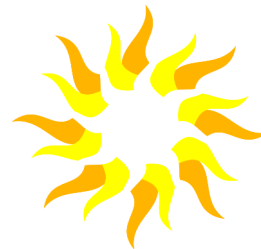


Welcome New Members!!!

Eileen & Marvin Reingold of Delray Beach and Melville, NY

Todd Cossey from Lantana

Edie McGee-Peterkin from Lake Worth



Sunshine Committee

Call **Lo Rain** and let her know who needs a little
sunshine sent their way! 561/827-5793

Minutes of the March 19, 2015 General Membership Meeting

The business meeting was called to order at 7:30 PM by **Michelle Renee**, President.

Pledge

Visitors: Clair Frank here with Linda Hirsh, Marvin Reingold & wife Eileen Reingold, Tom from Rochester, Benjamin found us from the show

Birthdays: Janis Perryman & Dianna Ray

Program: Debbie Kachman & Lo Rain's trip to Quartzite and rock & fossil identification

Treasurer's Report: Jenny Wright gave the treasurer's report.

Minutes: Jeff Slutzky motioned to accept minutes in newsletter. Motion seconded. All in favor.

Newsletter: Newsletter editor is moving and we need someone to take her place.

Prize drawings: If you would like to donate anything lapidary related for the raffle or door prizes please see Keith Klein.

Website: Is up and running, please check it out.

Membership: We have a new membership coordinator.

Sunshine Committee: No sunshine report. We have chosen a new name for her "Sunshine Ambassador".

Classes: Debi Kachman will do a wire fan bracelet class. Arlene Lazzaro has next class cold connections in May. Samantha will have an enameling class either before or after Arlene's class. Dianna Ray is working on getting a gem tree class together. Cabochon classes during open shop by Susan Cairl. Open metal shop once a month on a Sunday at the shop.

Shop: No shop report today

Show: Jeff Slutzky - The show this year is the 21st & 22nd of November. Looking for special gold related theme ideas for our 50th anniversary for 2016. This year we are already completely booked. We are going to sell tote bags this year. T shirts are still available. Jeff Slutzky is organizing a storage clean up and inventory April 12th.

Social Events: Debi Kachman - Steak dinner w/auction is coming up April 19th. We will be auctioning stuff from donations. Amber & Dori are lending us their grill and cooks. Jeff Slutzky will be our auctioneer. Gale Langford will be our presenter "Vanna". If you would like to donate for the auction please see Jeff. Bring your place setting and a dish to share, sides such as veggies or salads. Don't forget your drink. We need people to help set up and take down, please see Debi to volunteer. Steaks are serve around 12:00 sometimes a little earlier so come early to get a seat. Steak Diner is free for members and \$10.00 for guests.

Kiln Certification: Michelle has 4 categories - art clay silver, enameling, fused glass and metal annealing. She has printouts and will be setting up times. She is still working out a time.

New Business: Please use Amazon.Smile we get .5% of purchases.
Wright, Arlene Lazzaro, and Jeff Slutzky.

New scholarship winners are Jenny

Art Samuels is still recuperating and will let us know when the gem class will be. Call Michelle if you are interested. He is doing this class for free. Field trip to Alan Meltzer's is coming up. Jack will come this summer sometime to give a class. We have a new computer in the shop. Sat Barbara Ringheiser and Ron Ketaalar are volunteering for the archeofest at the museum. We will have a booth at the gem show at the fairgrounds the 28th and 29th of March. If you would like to volunteer see Michelle. There is a Fossil show in Tampa Sat & Sun. There is an Air show in Melbourne this weekend. Jack Stamper said he really appreciates the security system in the shop.

Meeting is adjourned @ 9:50 pm.

Next general meeting: Thursday, April 16th, 2015 at 7:30 PM and will be held at the former Garden Center (across from the Science Center).

Submitted by Dianna Ray, Secretary



Annual Steak Dinner and Auction

The **Annual Steak Dinner** will be April 19, 2015 at the former Garden Club, where we have our monthly meetings. Mark your calendars and save your money!

The Society will supply the steaks and **you bring** your own table service (plates and silverware), drinks, and a side dish to share (we suggest salads, vegetables, or dessert).

Setup starts at 10AM. We will be serving the steaks around noon, so get there early for a good seat.

It's free for paid-up members, guests are \$10.00. The auction will follow after we finish eating. The society has received a number of donations and we'll be auctioning off some of them. You can get some nice things to add to your collection or if you have things to donate please let us know.

Members Dori and Bruce Lawson and Amber and Wesley Griggs have offered to lend us a grill and also cook the steaks! Volunteers are needed to setup and cleanup. **As always if you can volunteer let us know!**

Debi Kachman, Social Events



TY PARK Tri-Club Picnic and Rock Swap & Sale

Mark your calendars for Sunday, May 3, 2015 from 10:00AM-4:00 PM. The event will be at Pavilion #9 at TY Park.

Main dishes are provided by each club. Bring a potluck dish to share, your table service and drinks (no glass container, please). There will be raffles and bingo (which pay for the pavilion), so please bring an item or two or three to donate as prizes!!

This is a fun event and a chance to relax and mingle with club members of the Palm Beach, Gold Coast, and Miami clubs.

Volunteers are needed to help set-up, sell tickets, call bingo, and clean-up.

There is no charge to set up a table and sell club-related items, just bring your own table and chairs. Plan to arrive around 9:30-10:00 AM to set up.... lunch will begin at 11:30 AM.

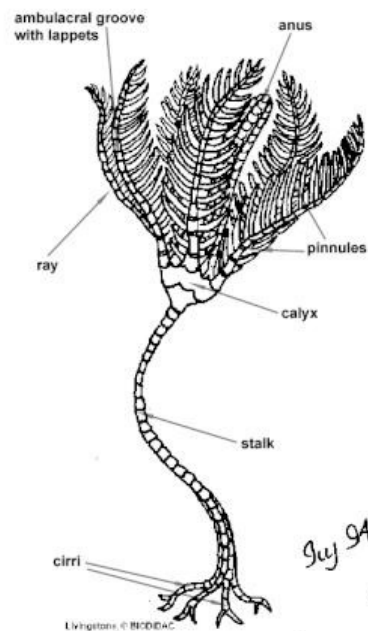
From I-95 go West on Sheridan Street. Go North (right turn) on North Park Road. The Park entrance will be on the right (east) side. Park admission is \$1.50 per person. For more info, call Sean Branigan or KC Foster.



NEED VOLUNTEERS FOR THE STORAGE CLEAN-UP ON APRIL 12TH!

The show committee is looking for volunteers that can help with the storage unit cleanup and inventory taking place on Sunday, April 12 at 10 AM. We will be emptying the unit and repacking it after taking inventory. Anyone who wants to help, call Jeff Slutzky . The storage unit is at Cubesmart, 4200 Forest Hill Blvd.

Page 4



Crinoids—Beautiful Underwater Flowers

Crinoids are marine invertebrate that make up the class Crinoidea of the echinoderms (phylum Echinodermata). This is the same phylum to which starfish, sea urchins, and sand dollars belong. Crinoidea comes from the Greek word krinon, "a lily", and eidos, "form" because they resemble an underwater flower.

Often referred to as "Sea lilies", they are also some of the oldest fossils on the planet. The earliest come from the Ordovician Period. Most of the Paleozoic forms died out in the great Permian extinctions. The few species surviving into the Mesozoic Era thrived. Many new species evolved during this time including the ancestors of the present day class Articulata.

These echinoderms were at their height during the Paleozoic era. They could be found all over the world, creating forests on the floor of the shallow seas of this time period. There were so many in places, that thick limestone beds were formed almost entirely from their body parts piled on top of each other.

Crinoids are comprised of three basic sections; the stem, the calyx, and the arms. The stem is composed of

highly porous ossicles which are connected by ligamentary tissue. The calyx contains the crinoid's digestive and reproductive organs, and the mouth is located at the top of the dorsal cup, while the anus is located peripheral to it. The arms display pentamerism or pentaradial symmetry and comprise smaller ossicles than the stem and are equipped with cilia which facilitate feeding by moving the organic media down the arm and into the mouth.

Crinoids of today tend toward deeper waters. The stalked varieties are usually found in water over 200 meters deep, though some can be found 100 meters deep. The unstalked varieties, comatulids also live in deeper waters though

generally not as deep as the sea lilies. The majority of living crinoids are free-swimming and have only a vestigial stalk. In those deep-sea species that still retain a stalk, it may reach up to 1 metre (3.3 ft) in length, although it is usually much smaller. There are only about 600 extant crinoid species, but they were much more abundant and diverse in the past. Some thick limestone beds dating to the mid- to late-Paleozoic are almost entirely made up of disarticulated crinoid fragments.

Sources:

<http://www.fossils-facts-and-finds.com/crinoids.html>

<http://palaeo.gly.bris.ac.uk/palaeofiles/fossilgroups/crinoidea/>

<http://en.wikipedia.org/wiki/Crinoid>

<http://www.paleosoc.org/Crinoids.pdf>

Page 5

Upcoming Shows....

April 10-12, 2015

Central Florida Mineral & Gem Society Annual Rock, Mineral, Gem & Jewelry Show

Fri 1-6, Sat 10-6, Sun 10-5

Florida National Guard Armory, 2809 South Fern Creek Ave, **Orlando**, FL 32806

www.cfmgs.org

April 10-12, 2015

Annual Venice Shark's Tooth Festival

Fri 4-9, Sat 10-9, Sun 10-5

Venice Airport Festival Grounds, 120 E. Airport Ave., **Venice**, FL 34285

<http://www.sharkstoothfest.com/>

April 18-19, 2015

Miami Mineralogical & Lapidary Guild Gem, Mineral, Fossil & Jewelry Show

Sat & Sun 10-6

Evelyn Greer Park 8200 SW 124 St **Pincrest**, FL

www.miamirockandgem.com

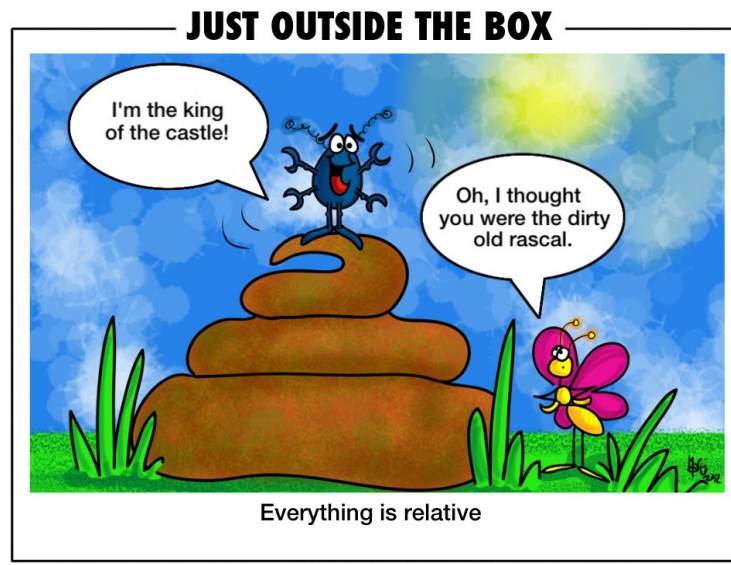
August 14-16, 2015

Frank Cox Gem-Jewelry-Bead Show

10-5 daily

Melbourne Auditorium, 625 E. Hibiscus Blvd., **Melbourne**, FL 32901

<http://www.frankcoxproductions.com/schedule/>



A *coprolite* is fossilized feces.

Coprolites are classified as trace fossils as opposed to body fossils, as they give evidence for the animal's behaviour (in this case, diet) rather than morphology.

The name is derived from the Greek words κόπρος (kopros, meaning "dung") and λίθος (lithos, meaning "stone").

A private collector paid \$10,370 at auction for what was touted as a six-million-year-old turd measuring "an eye-watering 40 inches in length" and believed to be "possibly the longest example of coprolite ever to be offered at auction".

To read more about this fascinating story and see a picture of the coprolite, see

<http://news.nationalgeographic.com/news/2014/07/140729-dinosaur-coprolite-paleontology-dung-fossil-auction/>

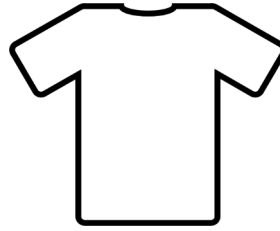
Page 6



If members have something hobby-related to sell

contact the newsletter editor at

newsletter@gemandmineral.cc



Club T-Shirts

We have G&MSPB cotton T-shirts for sale in adult and youth sizes.

Adult T-shirts are yellow and have the club emblem printed in black on the front of the shirt. Adult sizes are S, M, L, XL, 2XL, and 3XL. The price is \$16 each.

Youth T-shirts are green with black printing. The back of the shirt is decorated with a graphic of a prospector's shovel with the slogan "I Got Rocked At The Last Chance Mine". The club emblem is on the front of the shirt and says "Junior Rockhound." Youth sizes are S, M, L, and XL. The price is \$12.

Contact Jeff Slutzky for a shirt.



The Gem and Mineral Society of the Palm Beaches is now registered with smile.amazon.com.

What is AmazonSmile?

AmazonSmile is a simple and automatic way for you to support your favorite charitable

organization "The Gem and Mineral Society of the Palm Beaches" every time you shop, at no cost to you.

Due to our 501 (c) (3) corporation status we are eligible for this program.

When you shop at smile.amazon.com, you'll find the exact same low prices, vast selection and

convenient shopping experience as Amazon.com, with the added bonus that Amazon will donate a portion of the purchase price (0.5%) to The Gem and Mineral Society of the Palm Beaches.

You can use this link <http://smile.amazon.com/ch/59-6196330> to access smile.amazon.com for The Gem and Mineral Society of the Palm Beaches.



SHOP TALK

Open Shop Schedule

Open shop fees: \$5 for 3 hours, or \$7 for over 3 hours.

No charge to visit the shop to use the library.

Cabbing Open Shops

Tuesday nights 6-9 PM - Shop Steward, Susan Cairl*

Friday nights 6-9 PM - Shop Steward, Susan Cairl*

Contact Susan before going!

Thursday afternoons 12:30-3:30 PM - Shop Steward, Dennis Rietwyk*

Call or text Dennis before going!

Metalworking/Enamel Open Shop

The next Metalworking open shop is scheduled for April 26 from 10 AM - 4 PM.

Call Michelle Renné to confirm the open shop.*

This is not a class. Members that have taken Arlene's class or are knowledgeable about metalworking or silversmithing are welcome, but there will be no instruction during the open shop. NO saws or cabbing machines will be used. Feel free to bring a lunch and beverage. Call Michelle with any questions.

***Always call the shop steward before going to the shop to let them know you are coming! If the assigned shop steward cannot be reached, call Susan Cairl, Head Shop Steward, to arrange for open shop time.**

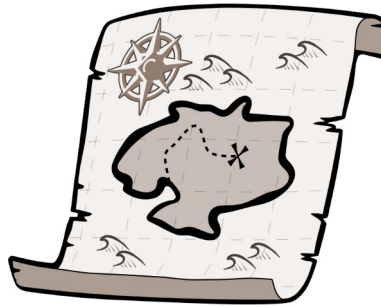
SHOP REPORT

Special bulletin: We have an Intarsia machine and Flat Lap available for use at the shop! To use these machines, members must be certified to use the cabbing equipment in the shop. Just ask the shop steward on duty to get the machine out for you. Some additional instruction will be given by the shop steward.

- .. Please remember to sign a new liability waiver on your first visit to the shop and get a copy of the new shop rules.
- .. When visiting the shop for any reason, always sign in and out of the log book and fill in all information completely including date, times, reason for visit and any fees paid.
- .. Drinks and food are allowed in the shop, but please clean up after yourself and do not leave food or wrappers in the shop.
- .. Feel free to bring a project to work on, socialize, use the library, or watch a tutorial on the TV....just have fun!

The street address of the shop is:

3281 Lake Worth Road, Suite B, Lake Worth, FL 33461



Map coming soon

April 2015						
Sunday	Monday	Tuesday	Wednesday	Thursday	Friday	Saturday
			1	2	3	4
			Board Meeting 7:30 PM Shop	Open Shop** 12:30-3:30 PM General Work Dennis Rietwyk	Open Shop** 6-9 PM General Work Susan Cairl	Passover 
5	6	7	8	9	10	11
Easter 		Open Shop** 6-9 PM General Work Susan Cairl		Open Shop** 12:30-3:30 PM General Work Dennis Rietwyk	Open Shop** 6-9 PM General Work Susan Cairl	
12	13	14	15	16	17	18
STORAGE CLEAN-UP 10AM		Open Shop** 6-9 PM General Work Susan Cairl	Tax Day 	Open Shop** 12:30-3:30 PM General Work Dennis Rietwyk MEMBERSHIP MEETING	Open Shop** 6-9 PM General Work Susan Cairl	

				7:30 PM		
19	20	21	22	23	24	25
STEAK DINNER & AUCTION Setup starts at 10 AM, lunch is served at noon.		Open Shop** 6-9 PM General Work Susan Cairl		Open Shop** 12:30-3:30 PM General Work Dennis Rietwyk	Open Shop** 6-9 PM General Work Susan Cairl	
26	27	28	29	30		
Open Shop** 10AM—4PM Metal Work & Enameling ONLY Michelle Renne		Open Shop** 6-9 PM General Work Susan Cairl		Open Shop** 12:30-3:30 PM General Work Dennis Rietwyk		
<p>**CALL BEFORE GOING TO OPEN SHOP!!</p> <p>Always call the shop steward before going to the shop. Open shop sessions may be cancelled or changed due to scheduling conflicts. If the assigned shop steward cannot be reached, call Susan Cairl, Head Shop Steward, to arrange for open shop.</p>						

May 2015						
Sunday	Monday	Tuesday	Wednesday	Thursday	Friday	Saturday
					1	2
					Open Shop** 6-9 PM General Work Susan Cairl	
3	4	5	6	7	8	9
TY PARK PICNIC/ ROCK SWAP & SALE 10AM -4PM		Open Shop** 6-9 PM General Work Susan Cairl	Board Meeting 7:30 PM Shop	Open Shop** 12:30-3:30 PM General Work Dennis Rietwyk	Open Shop** 6-9 PM General Work Susan Cairl	

10	11	12	13	14	15	16
		Open Shop** 6-9 PM General Work Susan Cairl		Open Shop** 12:30-3:30 PM General Work Dennis Rietwyk	Open Shop** 6-9 PM General Work Susan Cairl	
17	18	19	20	21	22	23
Open Shop** 10AM—4PM Metal Work & Enameling ONLY Michelle Renne		Open Shop** 6-9 PM General Work Susan Cairl		Open Shop** 12:30-3:30 PM General Work Dennis Rietwyk MEMBERSHIP MEETING 7:30 PM	Open Shop** 6-9 PM General Work Susan Cairl	
24	25	26	27	28	29	30
		Open Shop** 6-9 PM General Work Susan Cairl		Open Shop** 12:30-3:30 PM General Work Dennis Rietwyk	Open Shop** 6-9 PM General Work Susan Cairl	
31						

****CALL BEFORE GOING TO OPEN SHOP!!**

Always call the shop steward before going to the shop. Open shop sessions may be cancelled or changed due to scheduling conflicts. If the assigned shop steward cannot be reached, call Susan Cairl, Head Shop Steward, to arrange for open shop.

Available Classes:

Class	Instructor	Cost	Date/Time/Notes
<u>Art Clay Silver</u>	Michelle Renne	\$50 + est. \$85 materials fee (depending on cost of silver)	Contact instructor to arrange
<u>Cabochon winter sessions</u> Six 3-hr sessions	Susan Cairl	\$60 + \$10 materials fee	Contact instructor to arrange
<u>Chain Making:</u> • Japanese Exploration (Beg) • Snake Chain (Adv) • Turkish Round (Adv)	Jen Ursillo	\$30 + \$25 materials fee \$30 + \$25 materials fee \$30 + \$25 materials fee	Contact instructor to arrange
<u>Cold Connections Class Series:</u> • Fold Forming Bracelet w/Beveled Stone Setting • Scrapbook Bracelet (rivets) • Metal Etching & Air Chasing Bracelet • 3D Pendant w/Druzy Stone Slice NEW!	Arlene Lazzaro	\$40 + \$35 materials fee \$40 + \$35 materials fee \$40 + \$40 materials fee \$40 + \$40 materials fee	Contact instructor to arrange
<u>Embellished Multi-Metal Jewelry</u>	Michelle Renne	\$40 + \$20 materials fee	Contact instructor to arrange
<u>Enameling</u>	Samantha Lazzaro	\$40 + \$50 materials fee	Contact instructor to arrange
<u>Enameling on Copper</u>	Hazel Levin	\$40 + \$15 materials fee	Two 3-hr sessions Contact instructor to arrange.
<u>Flat Lap</u>	Susan Cairl	\$40 + \$10 supplies fee	Contact instructor to arrange
<u>Fused Glass</u> (Beginner)	Harriet Flashenburg	\$50 + \$50 materials fee	Four afternoon sessions Class taught in season only. Contact instructor to arrange.
<u>Metalsmithing:</u> • Alien Prong Ring	Arlene Lazzaro	\$40 + \$15 materials fee	Contact instructor to arrange
<u>Non-solder Wire Work</u>	Michelle Renne	\$40 + \$15 materials fee	Contact instructor to arrange
<u>Right Angle Weave Cubes</u>	Jen Ursillo	\$40 + \$50 for optional kit fee OR supply list can be provided	Contact instructor to arrange
<u>Wire Fan Bracelet Class</u>	Debi Kachman	\$30 + \$20-50 materials fee (depending on metal) OR supply list can be provided	Contact instructor to arrange
<u>Wire Sculpture Class</u>	Debi Kachman	\$30 + \$20-50 materials fee (depending on metal) OR supply list can be provided	Contact instructor to arrange

Learning is fun and so is spending time with other club members!
A portion of every class cost goes back to the club and helps defray
the cost of running the shop.

Help the club, meet friends and have fun—sign up for a class today!!

Page 11

MEMBERSHIP DUES

Junior Membership—\$10.00 (Under age 18)

Single Membership—\$20.00 (Over age 18)

Family Membership—\$30.00 (Includes 2 adults and children under age 18 in a single household)

Membership expires on December 31st each year and is due by the end of February of the new year.

To renew your membership, make your check or money order to:

Gem & Mineral Society of the Palm Beaches, Inc. and mail to:

Membership Secretary

Gem & Mineral Society

P.O. Box 18095

West Palm Beach, FL 33416-8095

NAME TAGS

Available from:

Ace Marking Devices (\$12.00)

3308 S. Dixie Hwy.

West Palm Beach, FL 33405

561/833-4073

SHOP FEES

Up to 3 hours shop time - \$5

Over 3 hours shop time - \$7

SEE CALENDAR FOR OPEN SHOPS

SHOP STEWARDS

Shop Head Steward:

Susan Cairl

Shop Stewards:

Ed Flashenburg

KC Foster

Dennis Rietwyk

Shop Phone:

561/585-2080

2015 OFFICERS

President* Michelle Renné
 1st Vice President* Gale Langford
 2nd Vice President* Amber Griggs
 Secretary* Dianna Ray
 Treasurer* Jenny Wright

2015 DIRECTORS

Shop Head Steward* Susan Cairl
 Membership* Susan Cairl
 Newsletter Editor* Deb Slutzky
 Past President* Barbara Ringhiser
 Show Chairman* Jeff Slutzky

COMMITTEE CHAIRPEOPLE

Field Trips KC Foster
 Hostess Samantha Lazzaro
 Jr. Rockhound Program Larry Deaton
 Librarian Shop Steward on Duty
 Programs Amber Griggs
 Raffle Coordinator Keith Kline
 Refreshments Arlene Lazzaro
 Sunshine Committee Lo Rain
 Social Events Debi Kachman

*Denotes a Voting Member of the Executive Committee.

WEBSITE

www.gemandmineral.cc

Club Email Addresses

president@gemandmineral.cc

show@gemandmineral.cc

newsletter@gemandmineral.cc

membership@gemandmineral.cc

webmaster@gemandmineral.cc

Link to our **smile.amazon.com** account:

<http://smile.amazon.com/ch/59-6196330>

The Gem & Mineral Society of the Palm Beaches, Inc. is a 501 (c) (3) corporation and a member of the Eastern and Southeastern Federation of Mineral and Lapidary Societies, and is affiliated with the American Federation of Mineralogical Societies. Monthly meetings are held on the third Thursday of the month except for December, which is held on the second Thursday. Meetings start at 7:30 PM at the former Garden Club building (across from the Science Center), 4800 Dreher Trail North, West Palm Beach, FL 33405

Club Purpose:

To associate persons of the Palm Beach area of cutting, displaying and studying of rocks, shells, artifacts, and any kind of scientific objects of interest to the individual and the organization to promote community interest in these objects.

The society is a member of the Eastern Federation of Mineralogical & Lapidary Societies Inc. and the Southeast Federation of Mineralogical Societies, Inc., which are affiliated with the American Federation of Mineralogical Societies. Our members are able to participate in activities sponsored by these organizations.

©The Rockhound Copyright 2015

by the Gem & Mineral Society of the Palm Beaches, Inc.

Permission to reprint original material herein not otherwise copyrighted is granted, provided that credit is given to both author and publication. Articles not bylined are by the Editor.

FAIR USE NOTICE. This publication may contain copyrighted material the use of which has not been specifically authorized by the copyright owner. We are making such material available in our efforts to advance the educational understanding of the amateur jewelry fabrication and rock collecting hobbies. We believe this constitutes a 'fair use' of any such copyrighted material as provided for in section 107 of the U.S. Copyright Law. If you wish to use material from this publication for commercial or purposes of your own that go beyond 'fair use', you must obtain permission from the copyright owner.

Shop at AmazonSmile

and Amazon will make
a donation to:

Gem and Mineral Society
of the Palm Beaches

Get started

amazon smile

